

GEORGINA WATER TREATMENT PLANT MUSSEL CONTROL SYSTEM, OUTFALL AND SITE WORKS PROJECT

Presented to
Town of Georgina Council

Presented by
Pina Accardi
and Jessica Garner

Presented on
June 18, 2025



Today's Presentation

- Project overview, key drivers and outcomes
- What to expect – In water works, traffic management, pedestrian safety, road restrictions
- Ongoing communications with Town and residents
- Key Milestones

Georgina Plant Delivers Reliable, High-Quality Drinking Water



York Region is making improvements to:

- Georgina Water Treatment Plant (GWTP) located at 27135 Kennedy Road
- Low Lift Pump Station (LLPS) at 27167 Kennedy Road
- Pipe systems in Lake Simcoe and along Kennedy Road

Project includes:

- Upgrades to the GWTP
- Building a new **raw watermain** along Kennedy Road from the LLPS to the GWTP
- Improving the **intake pipe** and mussel control system
- Replacing the **outfall pipe**

Main Project Drivers include Quagga Mussels and Outfall Pipe

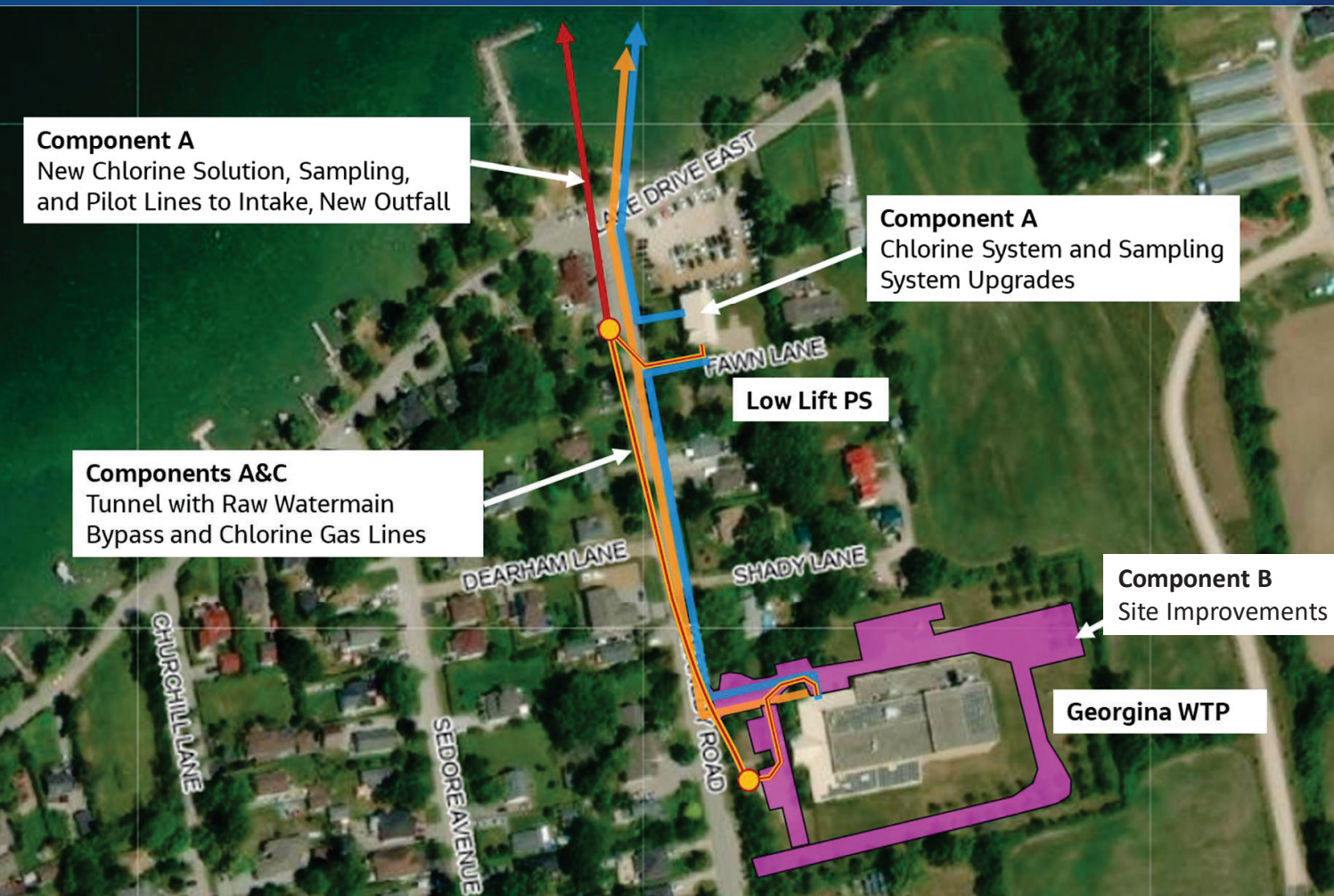


Quagga Mussels – intake water screening



Outfall Pipe – at lake surface

Project Outcomes Comprised of Three Components



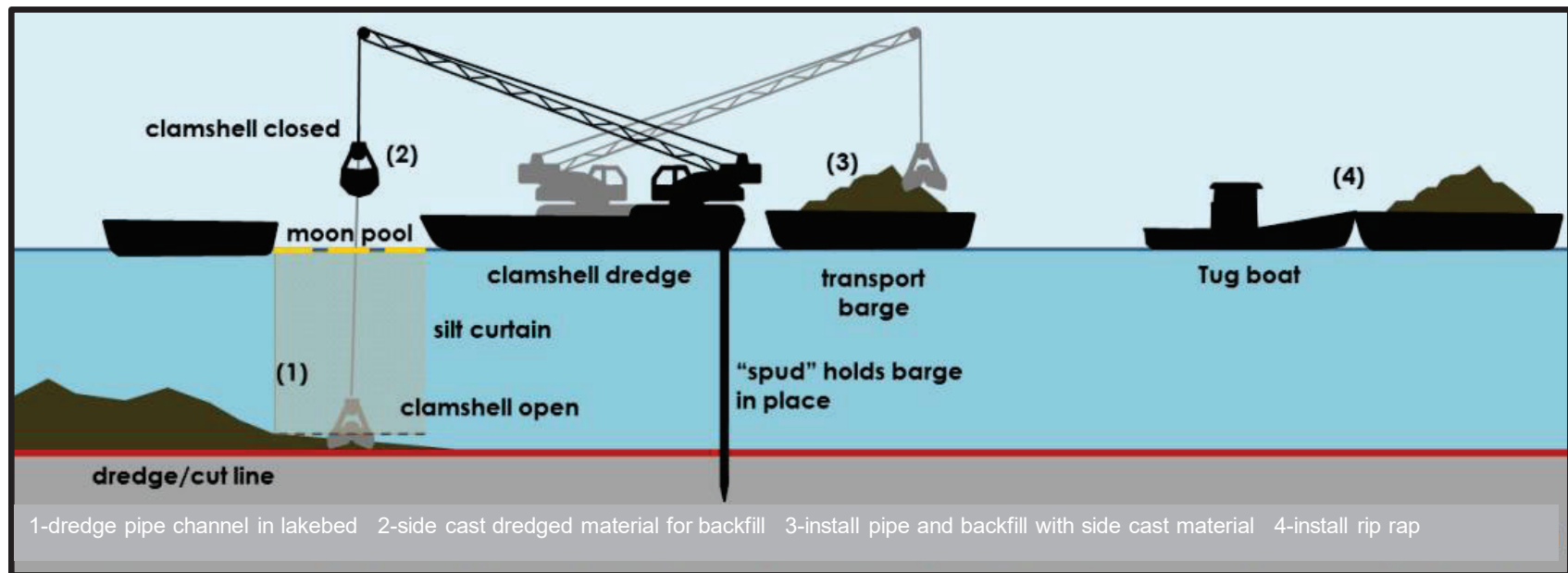
Component A:
Main Project Driver
Quagga Mussel
System Rehabilitation
and Outfall
Replacement

Component B:
GWTP Site
Improvements:
Stormwater and Traffic

Component C:
Tunnelling: Redundant
raw water intake pipe
from LLPS to GWTP

Extensive Agency Collaboration to Protect Natural Environment

- Transport Canada (TC)
- Lake Simcoe Region Conservation Authority (LSRCA)
- Fisheries and Oceans Canada (DFO)
- Ministry of Natural Resources (MNR)
- Ministry of the Environment, Conservation and Parks (MECP)



Component A - What to Expect in Lake Simcoe

- Actively monitor turbidity and mitigate concerns
- Use of **moonpool** and potential use of **turbidity curtains** during in-water construction works
- Potential for extended working hours in Lake Simcoe due to DFO & MNR in-water regulatory construction windows

Moonpool



Turbidity Curtain



Turbidity Curtain

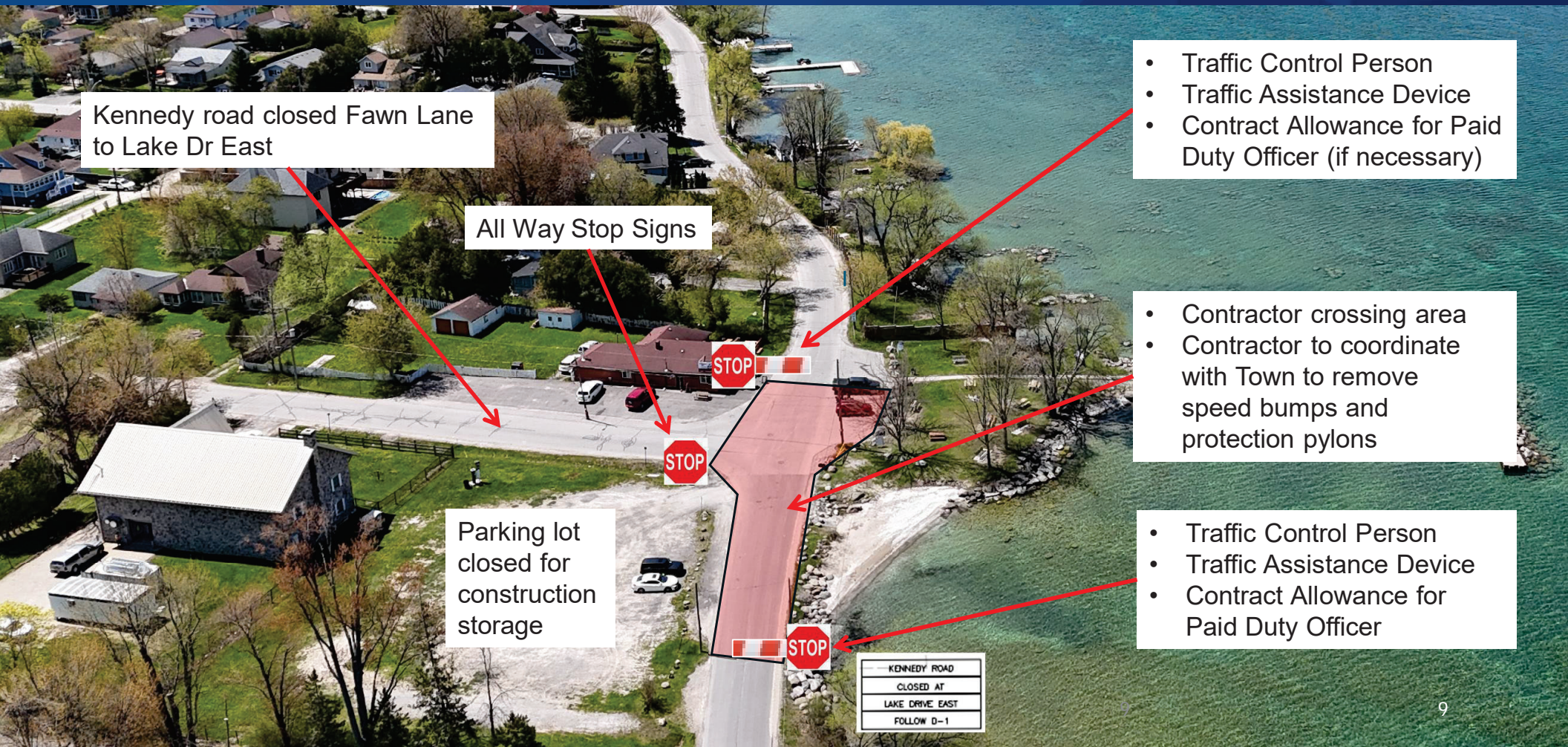


Component C Delivered Through Microtunnelling



- Compound 1 at the GWTP - Launch
- Compound 2 at Willow Wharf Park - Retrieval
- Microtunnelling along Kennedy Rd with a connection chamber across from the LLPS

Traffic Management Plan Prioritizes Traveler Safety



Sample Traffic Assistance Device Provides Physical Barrier

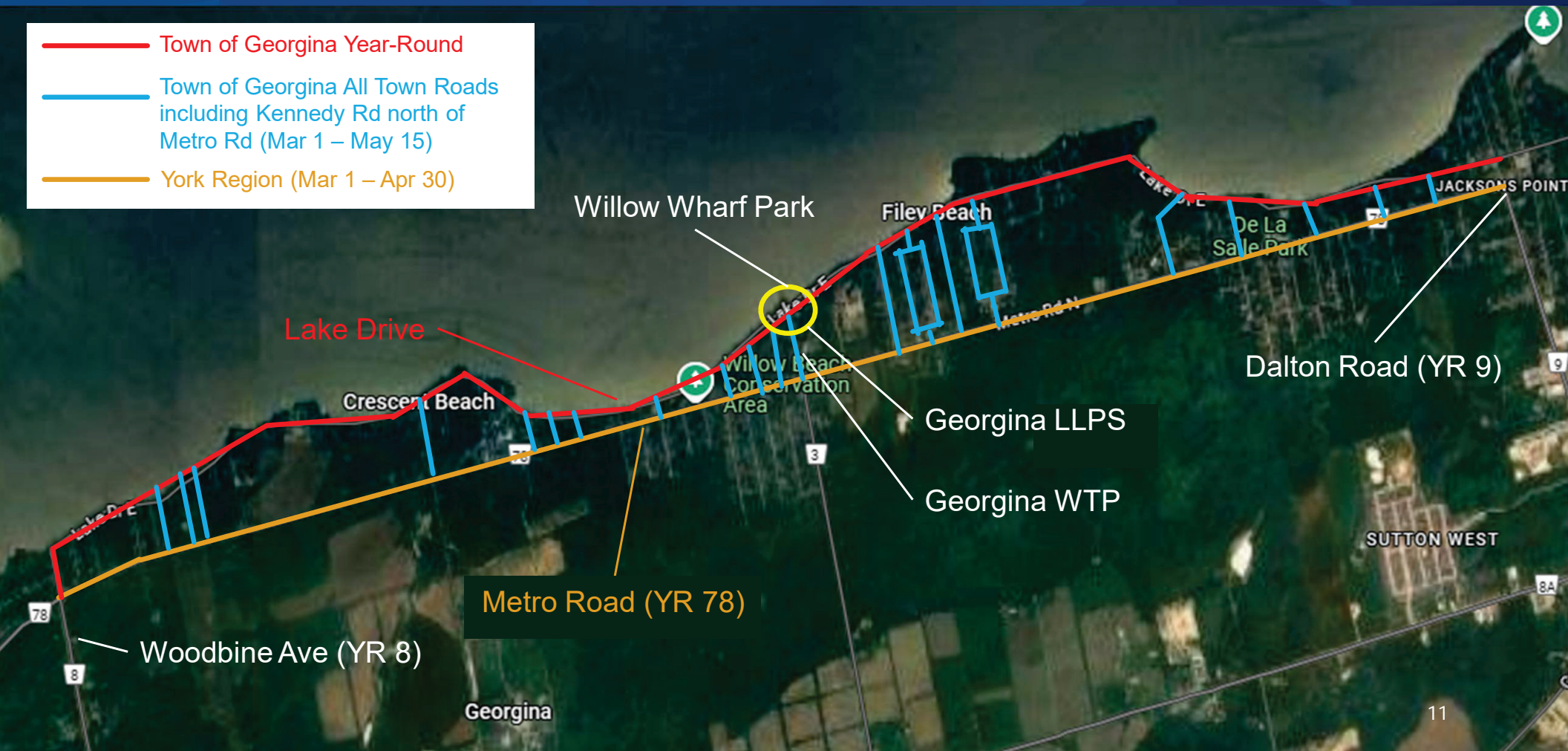
Traffic Assistance Device

Example: North American RCF2.4 Automated
Flagger Assistance Device






Road Load Restrictions - 5 Tonnes Per Axle Weight Restrictions

- Town of Georgina Year-Round
- Town of Georgina All Town Roads including Kennedy Rd north of Metro Rd (Mar 1 – May 15)
- York Region (Mar 1 – Apr 30)










Contractor Truck Traffic — Kennedy Road as Main Truck Route

-  Construction Zone
-  Contractor Truck Route
-  Road Closure

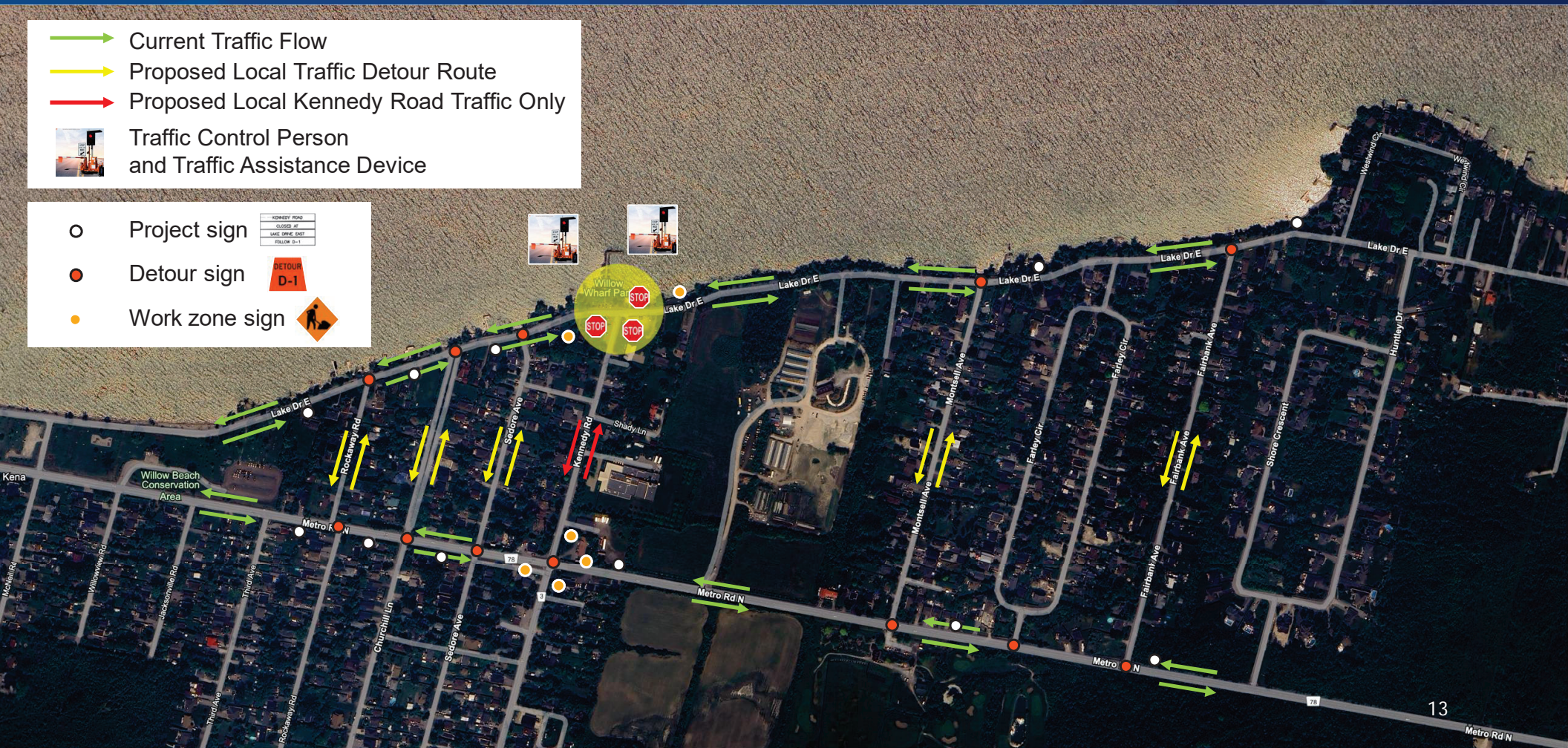


Local Traffic Management Plan Offers Multiple Options to Access Lake Dr

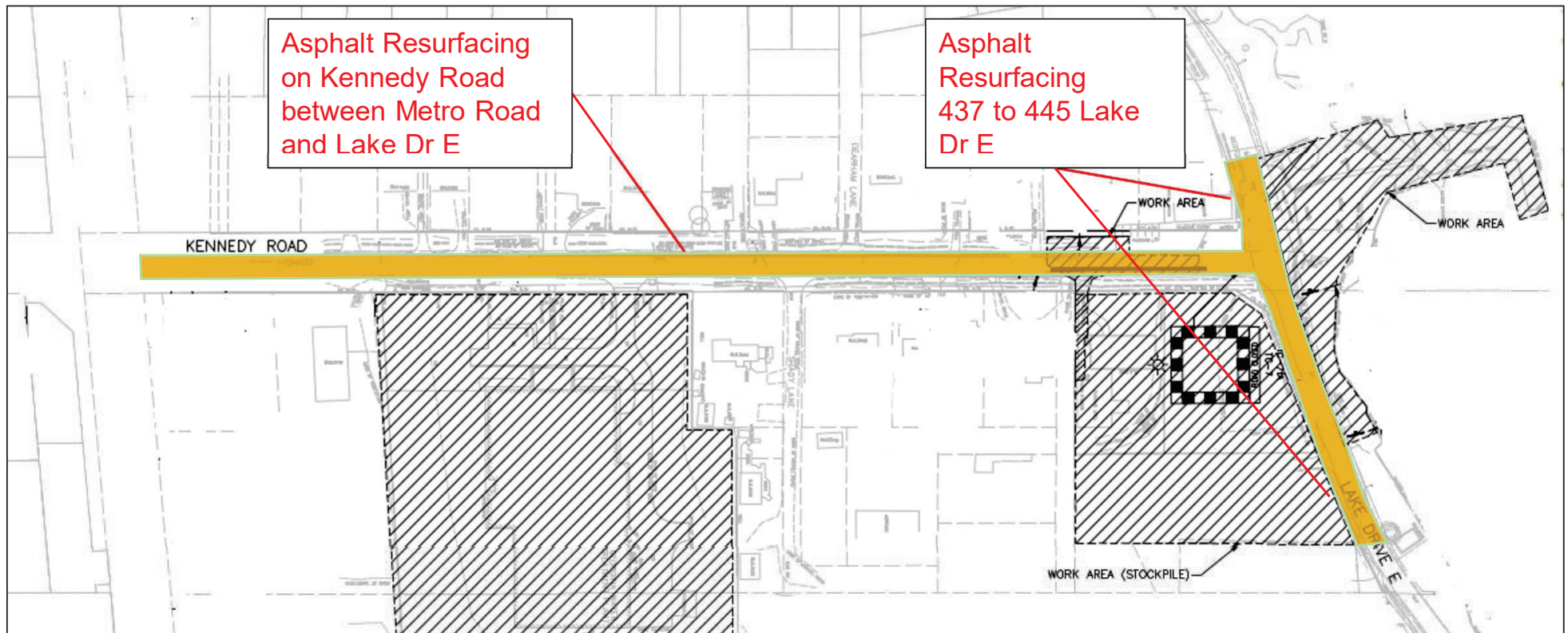
-  Current Traffic Flow
-  Proposed Local Traffic Detour Route
-  Proposed Local Kennedy Road Traffic Only
-  Traffic Control Person and Traffic Assistance Device

-  Project sign
-  Detour sign
-  Work zone sign

KENNEDY ROAD
ROADWORK AHEAD
LANE CLOSURE EAST
FOLLOW D-1



Asphalt Resurfacing at End of Construction



Ongoing Communications to Keep Town and Residents Informed

- Close collaboration between Region and Town staff to continue throughout construction
- Communications Plan to detail key messages and tactics
- Construction notices to be posted on York.ca and through social media
- Public Open House in early November 2025
- Clear project signage on site for road restrictions and detours
- Inquiries directed to Region's "Access York" team for logging and tracking responses



Key Milestones

- Tender: Summer 2025
- Construction Start: Q4 2025
- In Water Regulatory Timelines: July 15 – September 30, 2026
- Construction Completion: Q3 2027

Key Takeaways

- Improvements to the GWTP will ensure reliable supply of healthy, high-quality drinking water to residents and businesses
- Project has a unique set of regulatory and environmental factors with tight timelines for in-water works
- Design has been focused on minimizing impacts and adding in controls to keep everyone safe
- Region and Town to continue close communication



Thank you

For more information:

Pina Accardi, P.Eng.
Regional Municipality of York
Public Works
Director, Capital Delivery Water and Wastewater
pina.accardi@york.ca

Jessica Garner, P.Eng.
Regional Municipality of York
Public Works
Senior Project Manager
jessica.garner@york.ca

