

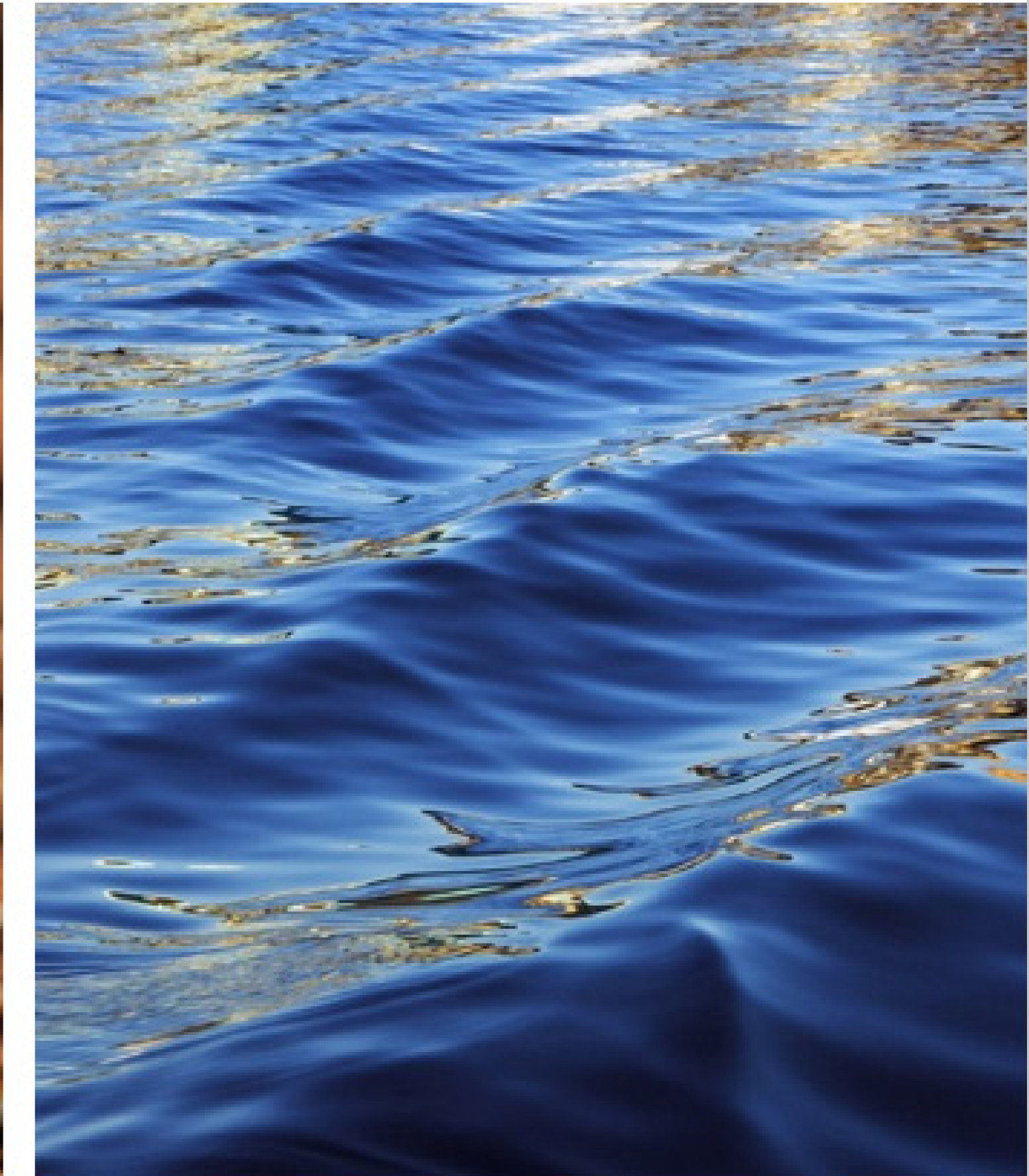


TREE
PRESERVATION
AND
COMPENSATION
POLICY NO.OID-01

Stakeholder Meeting



GEORGINA





GEORGINA

MEETING AGENDA



- OVERVIEW
- CURRENT APPLICABLE DOCUMENTS
- CURRENT POLICY & UPDATE
- WHERE WE ARE
- MOVING FORWARDS
- WHAT WE HAVE HEARD SO FAR
- WHAT OTHERS ARE DOING
- WHAT THE REGION IS DOING
- CONVERSATION/ DISCUSSION



GEORGINA

OVERVIEW

As the Town of Georgina increases in population there is added pressure through development and redevelopment.

The Town recognizes the importance of Trees for healthy and vibrant communities

A healthy urban forest is a major contributor to;

- Physical Health
- Mental Health
- Social Wellness
- Balanced wildlife population
- Reduce carbon dioxide in the atmosphere, and damaging effects associated



“If an existing tree, with a large canopy is healthy and happy, why disturb it?”



GEORGINA

CURRENT APPLICABLE DOCUMENTS

The Town of Georginas' OP states:

- 5.3.1.15** The illegal removal, modification or destruction of natural features, functions or linkages shall not provide the rationale for removal of these lands from the Environmental Protection Area designation. Where such illegal activity takes place, the impacted area shall be restored.
- 5.8.1** The Town requires ecological offsetting through the development process, where there is loss of natural features that are unavoidable (Woodlots)
- 5.8.2** Identifies means to compensate for feature loss with the objective of net environmental gain
- 7.1.11** The Town shall develop an Urban Forest Management Plan together with York Region that will include canopy cover targets for settlement areas and other local and regional requirements.



GEORGINA

CURRENT APPLICABLE DOCUMENTS CONT..

Keswick Secondary Plan

- 13.1.6.4.1 (I)** The removal, modification or destruction of key natural heritage features or key hydrological features or their functions by unauthorized development or site alteration is prohibited. Such removal, modification or destruction will not provide the rationale for the removal of these lands from the Environmental Protection Area designation. Restoration to the satisfaction of the Town will be required for these lands.

Sutton/JP Secondary Plan Policy

- 13.2.2.2 (d)** The removal or destruction of a key natural heritage feature or key hydrologic feature by unauthorized development or site alteration is prohibited. Such removal or destruction will not provide the rationale for the removal of these lands from the Environmental Protection Area designation. Restoration, to the satisfaction of the Town in consultation with the Lake Simcoe Region Conservation Authority, will be required for these lands.



GEORGINA



CURRENT POLICY & UPDATE

-The Town has a policy in place that was passed in 2016 with a primary focus of:

- Preservation
- Protection and enhancement
- Compensation

-In 2021 Council requested a review of the Policy

Work Plan Consisting of:

- Undertaking research and review of surrounding municipalities' tree protection policies
- Hiring a external consultant Arborist for technical support
- Consultation process
- Reporting back to council on all proposed Policy changes



GEORGINA



**ANY
QUESTIONS
SO FAR?**

WHERE WE ARE

Being present here today indicates that we are currently at the consultation phase of the update, which means we want to hear from YOU!

It is important to engage with stakeholders to share understanding of our urban forest and how to develop ways to ensure its health



GEORGINA

MOVING FORWARD

In compiling the data from the stakeholder meetings and through the review process we will report back to council.

We will also use all the gathered information to better assist our community in the future, in reporting to council on other topics such as:

- Other document updates
- Providing more information and education
- Penalties for tree damage or removals
- Tree planting initiatives



Tell us how we can help you?



GEORGINA

WHAT WE HAVE HEARD SO FAR

A number of issues with the current Policy have arisen concerning scope and interpretation of the policy from external users and Town staff.

Significant/Heritage

Preservation

COORDINATION

Circumstances for triggering an Arborist report

• **Exemptions**

WITH OTHER

Clarification on tree

Sizes for replacement tree

APPROVAL

condition requirements

AUTHORITIES

for protection

Clarification on Post-approval process

• **CIRCUMSTANCES FOR REFUSAL**

• **Tree Policy applicability Compensation values**

EDUCATION AND OUTREACH ASSISTANCE

Effectiveness of the Policy on maintaining tree canopy



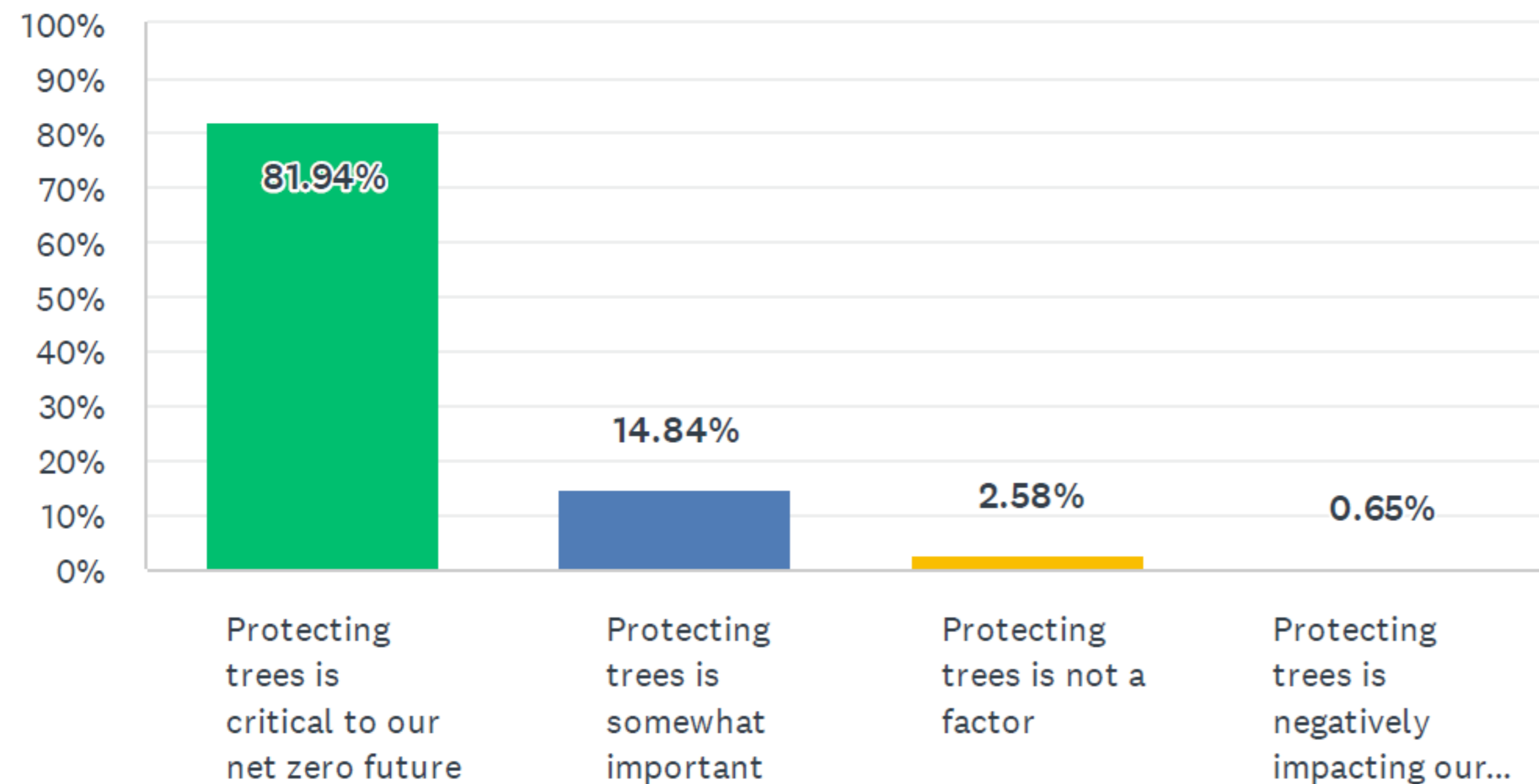
GEORGINA

WHAT WE HAVE HEARD SO FAR

Through public open house, Online surveys and posting to social media, the Town has heard the following from our residents.

To what extent do you think trees can contribute to Canada's goal of net zero carbon by 2050?

Answered: 155 Skipped: 2



“Protecting Trees is critical to our net zero future”

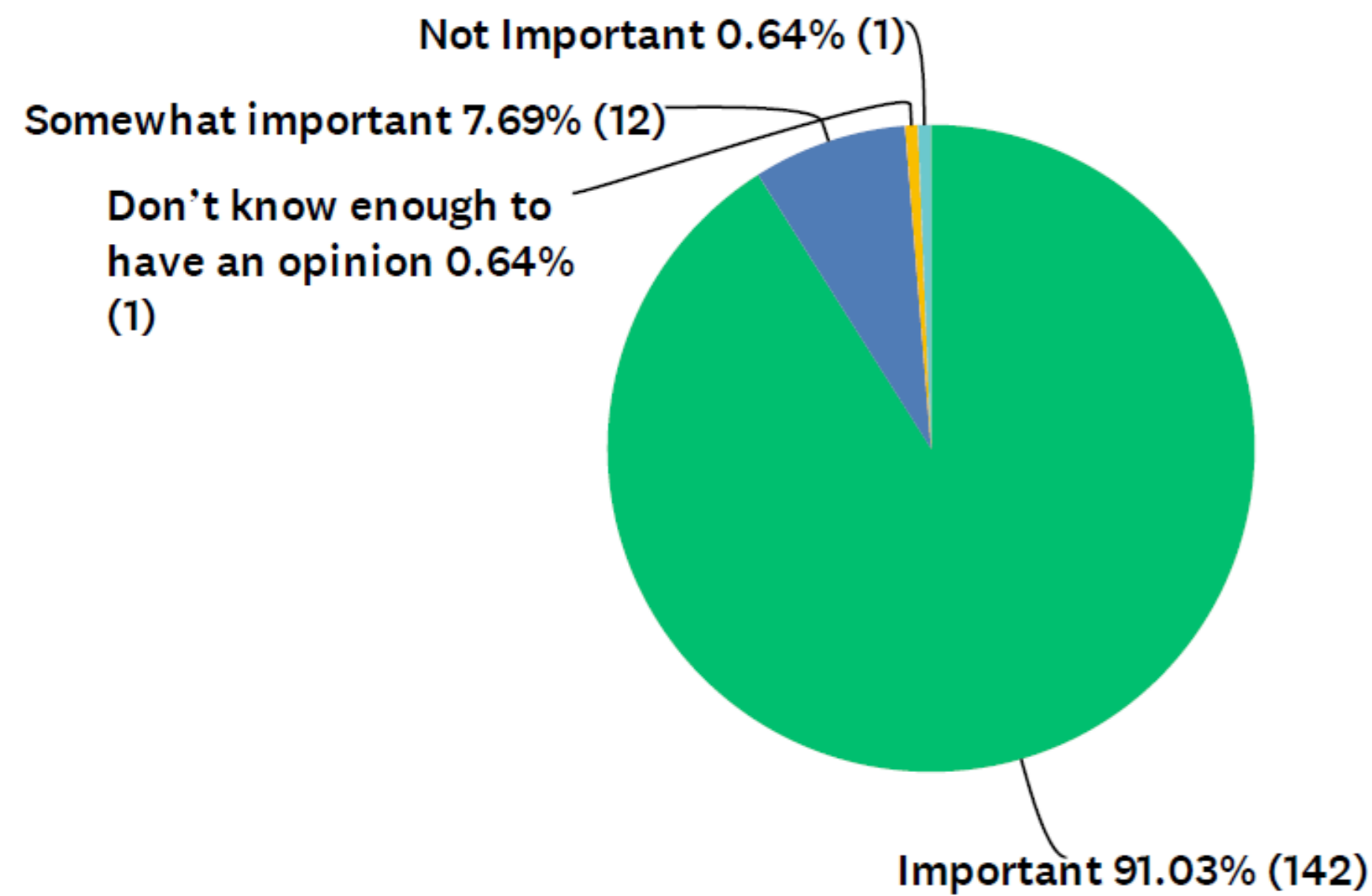


GEORGINA

WHAT WE HAVE HEARD SO FAR CONT..

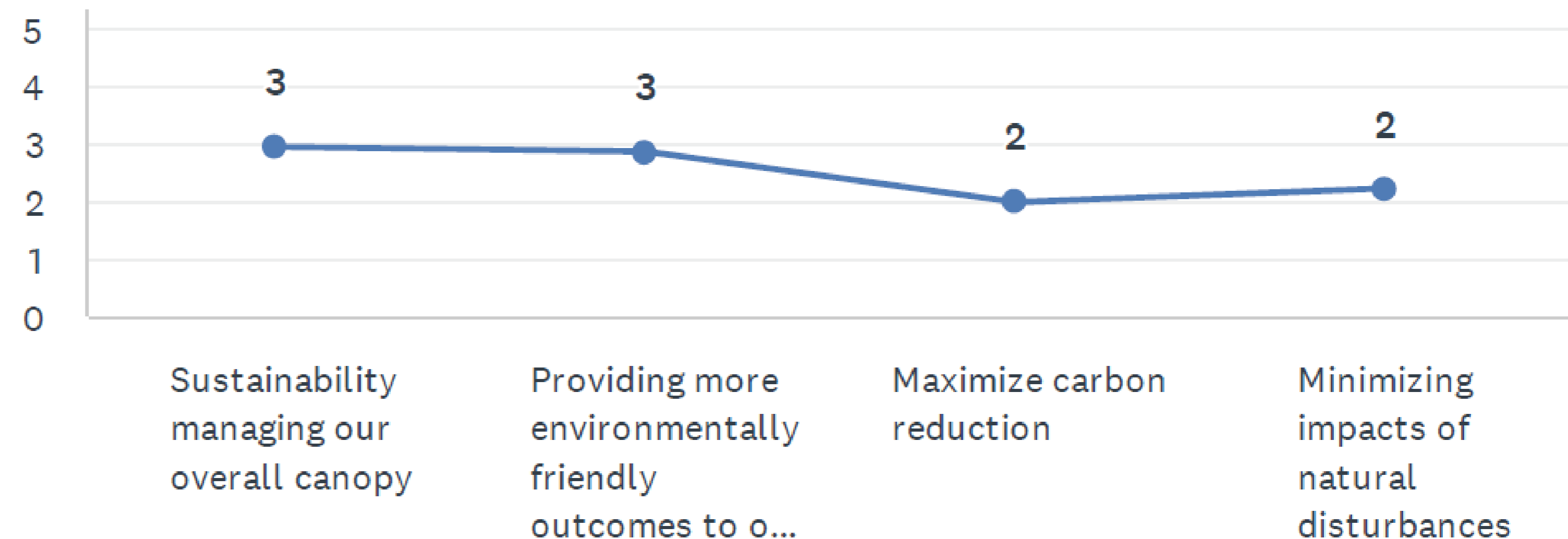
Would you say it is important to protect trees within the development process

Answered: 156 Skipped: 1



“Sustainably managing our overall canopy”

When thinking about what matters most to you in relation to trees, tree protection and increased canopy, how would you rank the following?



“IMPORTANT”



GEORGINA

WHAT OTHERS ARE DOING

Aurora (Tree Protection Preservation Policy)

- Identify all Tree Protection Zones
- Identify all 50 mm caliper for individual tree assessments
- Planting plan equal to or greater to appraised value of vegetation being removed.
- Minimum planting standards
- Tied to tree cutting by-law

Hamilton (Tree Protection Guidelines and Policy)

- Individual tags for all trees for 10 dbh or more
- Identify dollar value for all damaged trees
- Recognizes that tree management is not an isolated process, every project is unique
- Follow up site inspection to ensure the Tree Protection Policy had been fulfilled.



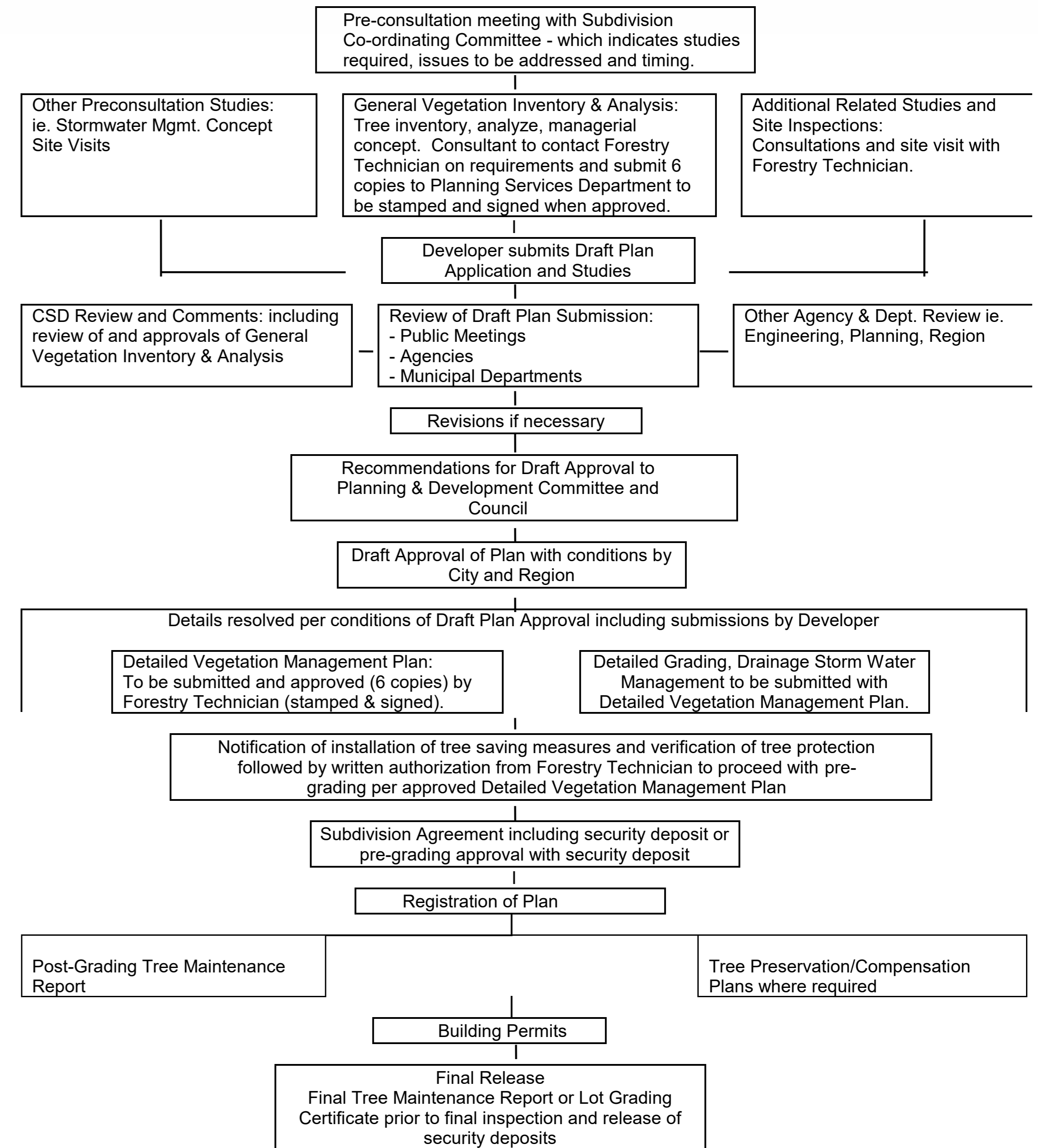
GEORGINA

WHAT OTHERS ARE DOING

Cambridge (Tree Management Policies and Guidelines)

- Two part mapping, first part maps area of natural features units and potential locations for future layout.
- Second mapping based on units of trees and detailed management plan
- Written verification that the tree management plan follows the policy
- Security deposits reflect 2 part mapping
- Some trees do not warrant protection
- Relocate high quality trees if first can not avoid or mitigate development locations.

Appendix C: Tree Management Plan Subdivision Planning Process & Requirements



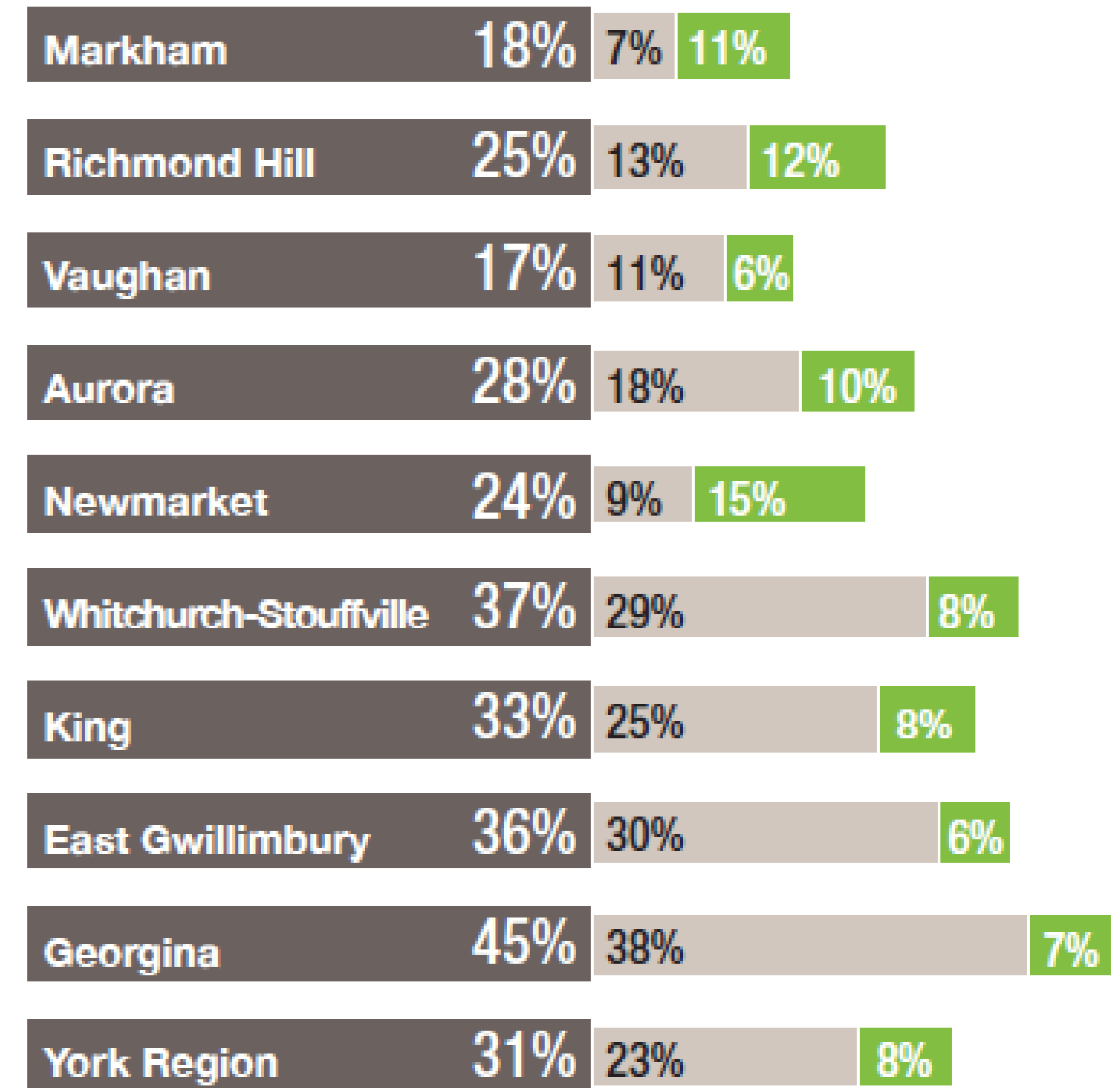


GEORGINA

WHAT THE REGION IS DOING

IN 2017 York Region did a Forest Management Plan, that consisted of mapping of existing canopy, recommended percentage increase for each municipality, honorable mentions and break downs of the figures.

First Nation/Municipality	Canopy Cover	Recommended Range	Woodland Cover	Recommended Range
Chippewas of Georgina Island First Nation	88.9%	★★★★	78.7%	★★★★
Aurora	34.0%	29% to 35%	18.4%	19% to 20%
East Gwillimbury	37.4%	39% to 44%	30.4%	31% to 33%
Georgina	44.4%	46% to 47%	34.8%	39% to 40%
King	34.3%	36% to 41%	26.5%	26% to 28%
Markham	20.6%	20% to 35%	7.5%	8% to 10%
Newmarket	28.1%	25% to 35%	9.8%	11% to 13%
Richmond Hill	29.8%	26% to 35%	14.7%	14% to 15%
Vaughan	21.9%	25% to 35%	12.4%	14% to 17%
Whitchurch-Stouffville	38.9%	40% to 45%	30.9%	30% to 32%
York Region	33.4%	40% by 2051	23.6%	25% by 2051



■ Total % ■ Woodland Cover ■ Canopy Cover Outside of Woodlands

“Lake Drive North”



GEORGINA

CONVERSATION/DISCUSSION

- Currently vague criteria for 'Glossary of Terms'
- Current inclusions
- Lacks clear enforcement mechanisms
- Lack of specifics
- Exemptions
- Effectiveness

Figure 5. Relationship Between Tree Size, Leaf Area and Benefits Provided to Residents

