

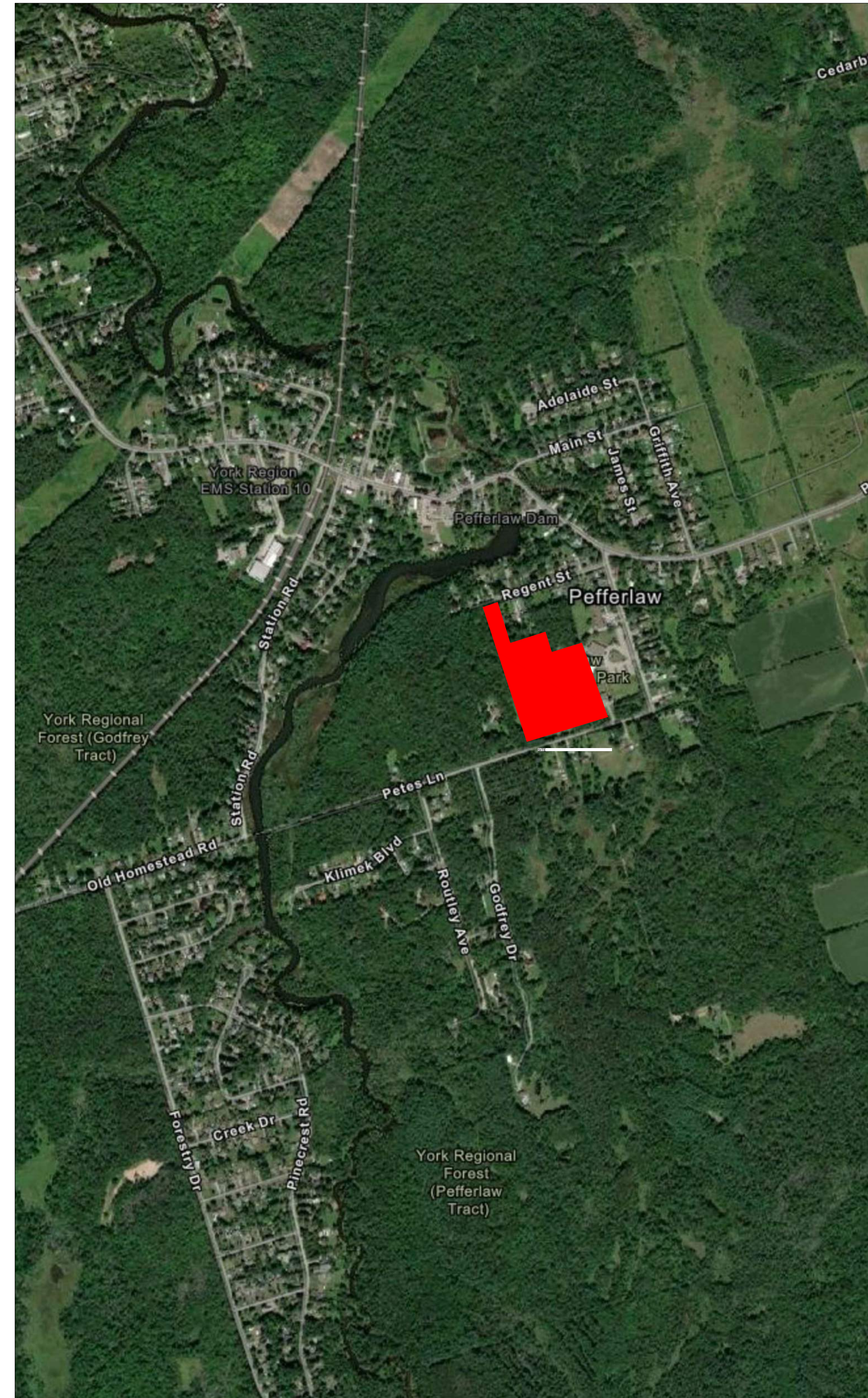
RE-ISSUED FOR TENDER

DECEMBER 7, 2023

SITE



KEY MAP



LIST OF DRAWINGS

- COVER PAGE
- L-1 - EXISTING CONDITIONS
- L-2 - LANDSCAPE LAYOUT, GRADING & PLANTING
- D-1 - DETAILS
- D-2 - DETAILS



GENERAL NOTES

BASE INFORMATION

- BASE INFORMATION FOR THIS PROJECT HAS BEEN TAKEN FROM THE TOPOGRAPHIC SURVEY PREPARED BY:
CIMA +
415 Baseline Road West, 2nd Floor,
Bowmanville, ON L1C 5M2
- SURVEY WAS COMPLETED ON MAY 2, 2023
- ELEVATIONS SHOWN HEREIN ARE COORDINATE SYSTEM USING FOLLOWING:
HORIZONTAL DATUM : UTMNAD83(CSRS)
VERTICAL DATUM : CGVD 28/78
- TEMPORARY BENCHMARKS ON SITE FOR LAYOUT PURPOSES ARE LOCATED AS FOLLOWS:
BENCHMARK 1:
CUT X ON SOUTHWEST CORNER OF CONCRETE CURB SURROUND PLAY AREA.
ELEVATION : 230.549M
BENCHMARK 2:
TOP OF SPIKE IN SOUTH FACE OF HYDROLIGHT POLE WHERE TRAIL TERMINATES AT REGENT ROAD
ELEVATION : 229.349M

GENERAL

- THESE DRAWINGS SHALL NOT BE USED FOR CONSTRUCTION UNLESS SIGNED BY THE LANDSCAPE ARCHITECT.
- REPORT ANY DISCREPANCIES BETWEEN DRAWINGS AND EXISTING CONDITIONS TO THE CONSULTANT PRIOR TO THE COMMENCEMENT OF ANY SITE WORKS.
- OBTAIN ALL NECESSARY PERMITS AND UTILITY CLEARANCES PRIOR TO COMMENCEMENT OF THE WORK.
- MAKE GOOD ALL DAMAGES RESULTING FROM WORK CARRIED OUT UNDER THIS CONTRACT AT NO EXTRA COST TO THE OWNER.
- ALL DIMENSIONS SHOWN ON THE PLANS ARE IN METRIC.

TREE PRESERVATION

- IT IS THE CONTRACTORS RESPONSIBILITY TO IDENTIFY POTENTIAL IMPACTS TO TREES LOCATED NEAR OR WHOLLY ON ADJACENT PROPERTIES OR ON SHARED BOUNDARY LINES WITH ADJACENT NEIGHBOURS. SHOULD ANY INJURY OR DEATH TO EXISTING TREES OCCUR DURING THE COURSE OF PROJECT WORKS THE CONTRACTOR SHALL BE RESPONSIBLE FOR THE REPLACEMENT OR COMPENSATION FOR ALL TREE IMPACTS TO THE SATISFACTION OF THE OWNER.
- TREE PROTECTION MEASURES SHALL BE INSTALLED TO STANDARDS NOTED ON THE DRAWINGS OR AS PER THE OWNERS TREE PRESERVATION REQUIREMENTS AND SPECIFICATIONS.
- TREE PROTECTION ZONES (TPZ) MUST BE INSTALLED USING MATERIALS AS NOTED IN THE DRAWINGS AND SPECIFICATIONS TO THE SATISFACTION OF THE OWNER.
- WHERE REQUIRED TREE PROTECTION SIGNAGE MUST BE DISPLAYED ON EACH SIDE OF THE BARRIER.
- PRIOR TO THE COMMENCEMENT OF CONSTRUCTION ACTIVITIES, THE TREE PROTECTION MEASURES MUST BE IN PLACE AND APPROVED BY THE OWNER.
- CONTRACTOR TO NOTIFY AND RECEIVE APPROVAL FROM THE OWNER FOR ANY ADJUSTMENTS TO TREE PROTECTION OR SEDIMENT CONTROL MEASURES. PRIOR TO IMPLEMENTING THE ALTERATION.
- TREE PROTECTION MEASURES SHALL REMAIN IN PLACE FOR THE DURATION OF ALL CONSTRUCTION ACTIVITIES AND ONLY TO BE REMOVED AT SUBSTANTIAL COMPLETION OR AS DIRECTED BY THE OWNER.
- NO CONSTRUCTION ACTIVITIES, GRADE CHANGE, STORAGE OF MATERIALS, EXCAVATION OR SURFACE TREATMENTS SHALL BE PERMITTED WITHIN THE TPZ OF PROTECTED TREES.
- ANY ADDITIONAL TREE PROTECTION MEASURES THAT ARE IDENTIFIED IN THE TREE PRESERVATION REPORT (AS APPLICABLE) MUST BE IMPLEMENTED TO THE SATISFACTION OF THE OWNER AND AT NO ADDITIONAL COST TO THE PROJECT.
- IF TREE PROTECTION MEASURES MUST BE REDUCED TO FACILITATE CONSTRUCTION ACTIVITIES THE TREE PROTECTION BARRIERS MUST BE MAINTAINED AT THE LESSER DISTANCE AND A HORIZONTAL ROOT PROTECTION SYSTEM BE PROVIDED TO THE APPROVAL OF THE OWNER

- ANY ROOT OR BRANCH PRUNING MUST BE UNDERTAKEN BY A CERTIFIED ARBORIST AND PERFORMED IN ACCORDANCE WITH APPROVED ARBORICULTURAL PRACTICE. ALL APPROVED ROOT PRUNING SHALL INVOLVE IRRIGATION OF THE ROOT AREA PRIOR, DURING AND AFTER PRUNING ACTIVITIES. EXCAVATIONS FOR ROOT PRUNING ACTIVITIES SHALL BE UNDERTAKEN USING EITHER A PNEUMATIC OR LOW PRESSURE WATER VACUUM TYPE PROCESS OR BY HAND DIGGING. (NOTE - FOR WATER VACUUM EXCAVATION WATER PRESSURE MUST BE LOW ENOUGH SO THAT ROOT BARK DAMAGE IS AVOIDED). THE ARBORIST PERFORMING THE PRUNING WORKS IS TO CONTACT THE OWNER NO LESS THAN 3 WORKING DAYS PRIOR TO PRUNING ACTIVITIES.
- THE CONTRACTOR SHALL PROTECT ALL SIGNIFICANT TREES NOT IDENTIFIED FOR REMOVAL FOR THE ENTIRE DEVELOPMENT SITE TO THE SATISFACTION OF THE OWNER.
- THE CONTRACTOR SHALL BE LIABLE FOR ANY PENALTIES ARISING FROM VIOLATIONS OF MUNICIPAL TREE PROTECTION BY-LAW REQUIREMENTS.

EROSION AND SEDIMENT CONTROL

- EROSION AND SEDIMENT CONTROL (ESC) MEASURES WILL BE IMPLEMENTED PRIOR TO, AND MAINTAINED DURING CONSTRUCTION, TO PREVENT DISCHARGE OF SEDIMENT OUTSIDE THE WORK AREA. ALL SEDIMENT CONTROL MEASURES SHALL BE REGULARLY INSPECTED BY THE CONTRACTOR AND REPAIRED AS NEEDED FOR THE DURATION OF THE PROJECT. DISTURBANCE TO EXISTING CONDITIONS SHALL BE MINIMIZED TO THE EXTENT POSSIBLE AND TO BE TEMPORARILY OR PERMANENTLY RESTORED AS THE WORK PROGRESSES.
- THE EROSION AND SEDIMENT CONTROL STRATEGIES OUTLINED ON THE PLANS ARE NOT STATIC AND MAY NEED TO BE UPGRADED / AMENDED AS SITE CONDITIONS CHANGE TO MINIMIZE SEDIMENT LADEN RUNOFF FROM LEAVING THE WORK AREA. IF THE PRESCRIBED MEASURES ON THE PLANS ARE NOT EFFECTIVE IN PREVENTING THE RELEASE OF ANY DELETERIOUS SUBSTANCE, INCLUDING SEDIMENT, THEN ALTERNATIVE MEASURES MUST BE IMPLEMENTED IMMEDIATELY, TO MINIMIZE POTENTIAL ECOLOGICAL IMPACTS. ADDITIONAL ESC MEASURES TO BE KEPT ON SITE AND USED AS NECESSARY.
- THE OWNER / CONSULTANT WILL ATTEND THE SITE TO INSPECT ALL CONTROLS ON A REGULAR BASIS PARTICULARLY AFTER A RAIN OR SNOWMELT EVENT, TO MONITOR ALL WORKS IN RELATION TO ESC MEASURES.
- ALL ACTIVITIES INCLUDING MAINTENANCE PROCEDURES WILL BE CONTROLLED TO PREVENT THE ENTRY OF PETROLEUM PRODUCTS, DEBRIS, RUBBLE, CONCRETE OR OTHER DELETERIOUS SUBSTANCES INTO ANY WATER BODY. VEHICULAR REFUELLING AND MAINTENANCE SHALL BE CONDUCTED A MINIMUM OF 30 METRES FROM ANY WATER BODY.
- THE CONTRACTOR SHALL MONITOR THE WEATHER SEVERAL DAYS IN ADVANCE OF THE ONSET OF THE PROJECT TO ENSURE THAT THE WORKS WILL BE CONDUCTED DURING FAVOURABLE WEATHER CONDITIONS.
- ALL DEWATERING SHALL BE TREATED AND RELEASED TO THE ENVIRONMENT AT LEAST 30 METRES FROM A WATERCOURSE OR WETLAND AND ALLOWED TO DRAIN THROUGH A WELL VEGETATED AREA. NO DEWATERING EFFLUENT SHALL BE SENT DIRECTLY TO ANY WATERCOURSE, WETLAND OR FOREST, OR ALLOWED TO DRAIN ONTO DISTURBED SOILS WITHIN THE WORK AREA. THESE CONTROL MEASURES SHALL BE MONITORED FOR EFFECTIVENESS AND MAINTAINED OR REVISED TO MEET THE OBJECTIVE OF PREVENTING THE RELEASE OF SEDIMENT LADEN WATER.
- ALL ACCESS TO THE WORK SITE SHALL BE AS INDICATED ON THE PLAN.
- ALL DISTURBED AREAS ARE TO BE STABILIZED TO RESTORE THE CONSTRUCTION SITE TO ITS PRE-CONSTRUCTION STATE OR BETTER, AND SHALL BE REHABILITATED BY APPLYING TOPSOIL AT A MINIMUM DEPTH OF 300mm AND SODDING.
- RE-GRADED AREAS WILL BE STABILIZED IMMEDIATELY AFTER FINAL GRADING HAS BEEN ACHIEVED, SPECIFICALLY A STABILIZATION PRACTICE WHICH IS SUITABLE GIVEN THE CONDITIONS (FROZEN ETC) ALL DISTURBED AREAS WHICH WILL REMAIN EXPOSED FOR LONGER THAN 5 DAYS SHALL BE COVERED WITH A LAYER OF STRAW MULCH. ANY COMPLETED AREAS WHICH ARE NOT RE-VEGETATED WITHIN 5 DAYS SHALL BE COVERED WITH A LAYER OF STRAW MULCH.
- STAGING AND STOCKPILING SHALL ONLY OCCUR WITHIN THE LIMITS OF THE DISTURBANCE IN AREAS INDICATED ON THE PLANS.
- TOPSOIL STOCKPILES SHALL NOT EXCEED 3 METRES IN HEIGHT. GENERAL FILL SHALL NOT EXCEED 5 METRES IN HEIGHT. STOCKPILES SHALL BE A MINIMUM OF 30 METRES FROM ANY WATER COURSE AND 10 METRES FROM ANY PROPERTY LINE. CONTRACTOR SHALL PREVENT THE DETERIORATION OF THE STOCKPILED MATERIAL. KEEP SURROUNDING ROADS AND PATHS FREE OF SOIL DEPOSITS. SILT FENCE SHALL BE INSTALLED AT THE BASE OF ANY MATERIAL STOCKPILES THAT ARE TO REMAIN ON SITE FOR LONGER THAN 1 MONTH. STOCKPILES AND OTHER EXPOSED AREAS THAT ARE TO REMAIN ON SITE FOR LONGER THAN 1 MONTH ARE TO BE SEEDED TEMPORARILY TO PREVENT EROSION AND CONTROL DUST.

2 GENERAL NOTES
SCALE: N.T.S.



TRUNK DIAMETER (DBH)	MINIMUM PROTECTION DISTANCES REQUIRED	NOTE: CONTRACTOR MAY SUBSTITUTE PREFABRICATED 1.8M HIGH FAST FENCE BELOW.
<10 cm	1.2 m	
10 - 29 cm	1.8 m	
30 - 40 cm	2.4 m	
41 - 50 cm	3.0 m	
51 - 60 cm	3.6 m	
61 - 70 cm	4.2 m	
71 - 80 cm	4.8 m	
81 - 90 cm	5.4 m	
91 - 100 cm	6.0 m	
>100 cm	6 cm protection for each 1 cm diameter	

LEGEND

	PHASE LINE		STRIP AND REMOVE TOPSOIL AND SOO TO SUBGRADE
	EXISTING TREE TO BE PRESERVED		EXISTING TREE TO BE REMOVED
	TREE PROTECTION FENCE		1.8m HIGH CONSTRUCTION FENCE
	1.8m HIGH CONSTRUCTION FENCE WITH SILT SOCK		1.2m HIGH SILT FENCE

NO.	REVISION	DATE	BY
4	SILT FENCE ADDED & RE-ISSUED FOR TENDER	2024.01.25	AJ
3	RE-ISSUED FOR TENDER	2023.12.07	AJ
2	ISSUED FOR TENDER	2023.11.30	AJ
1	ISSUED FOR CLIENT REVIEW	2023.05.10	AJ

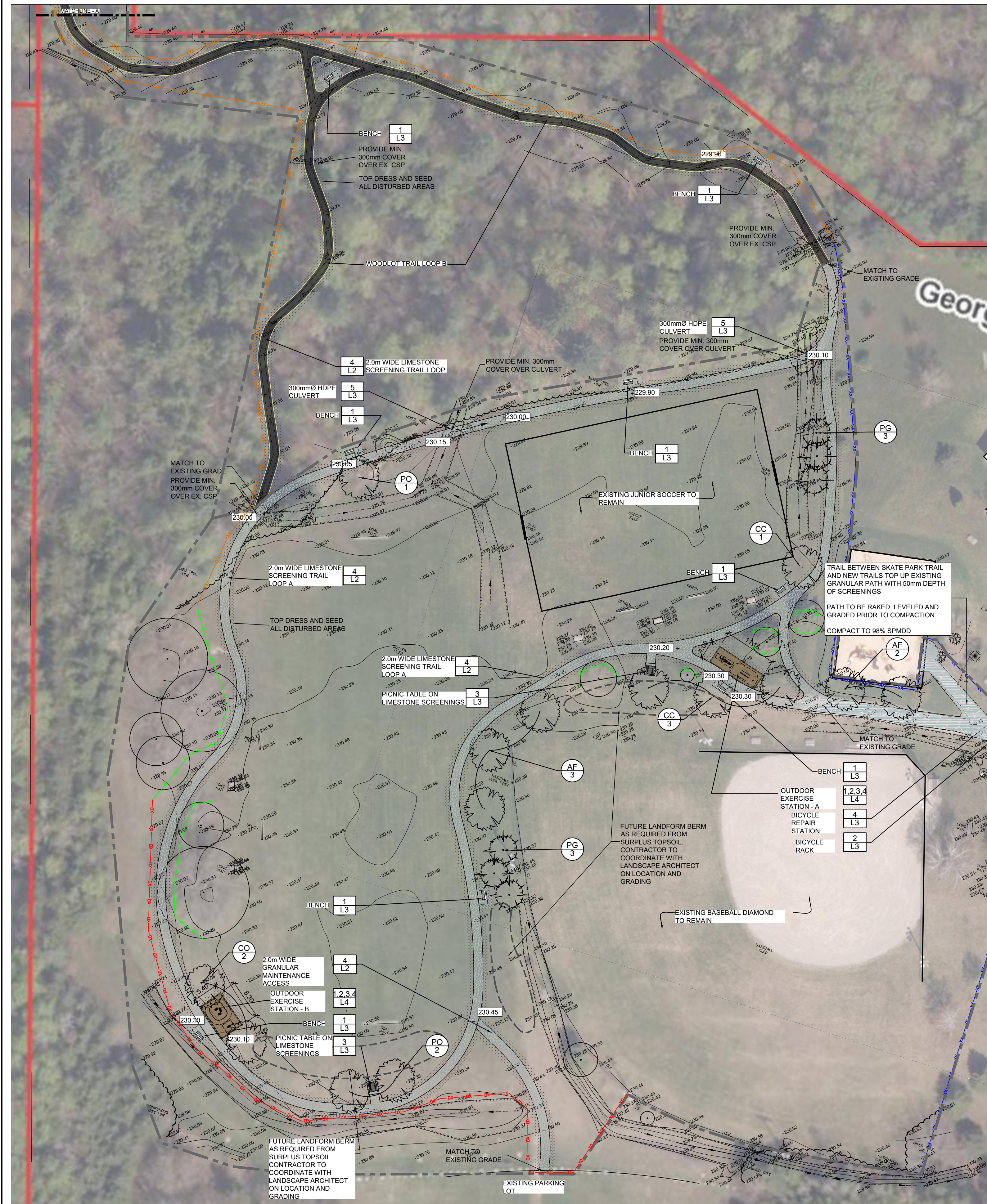
PROJECT:	PEFFERLAW TRAILS
DRAWING:	EXISTING CONDITIONS & REMOVALS

Georgina Public Library

Northern Lights Landscape Architects

DRAWN:	AJ	CHECKED:	SG	APPROVED:	SG
SCALE:	AS SHOWN	DATE:	MAY 5, 2023	DRAWING FILE:	NL-020-L2.DWG

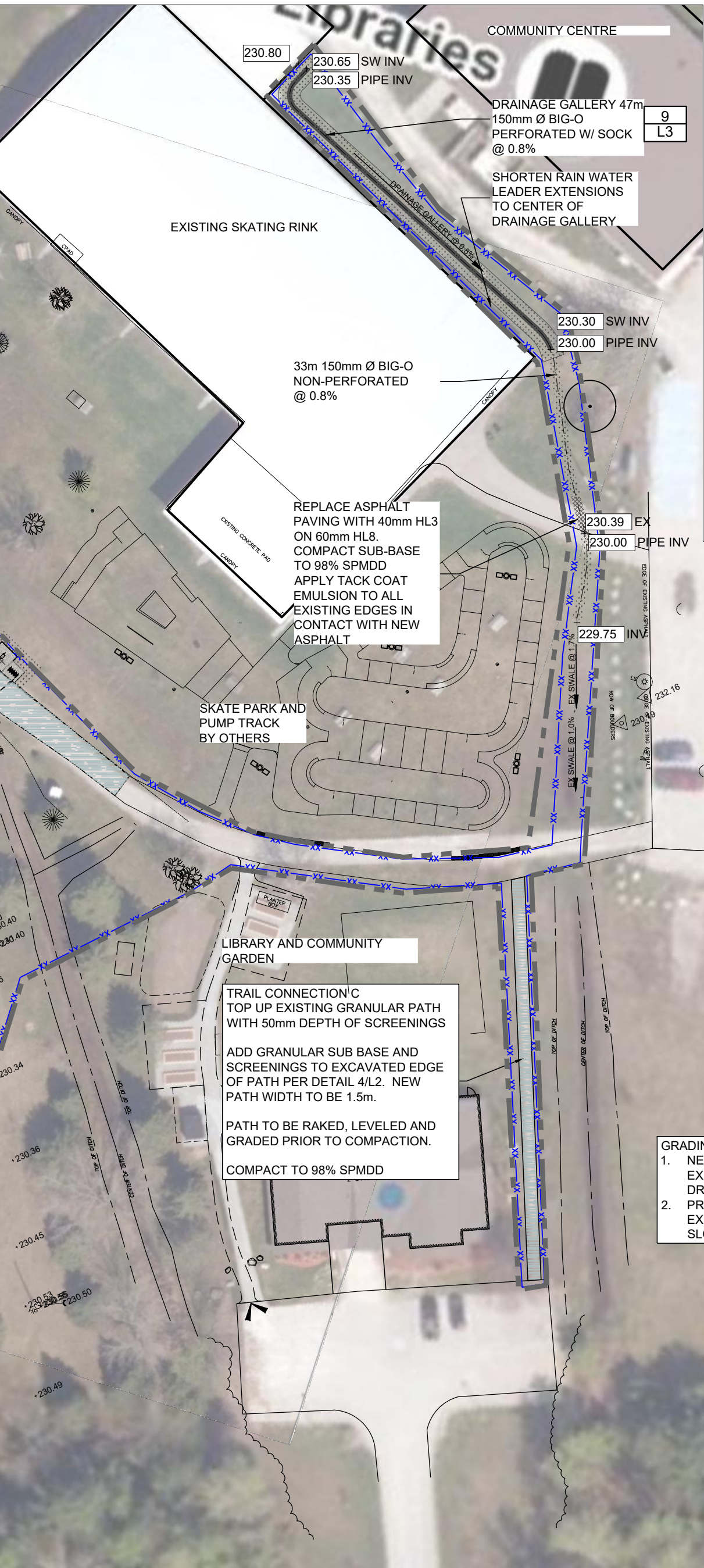
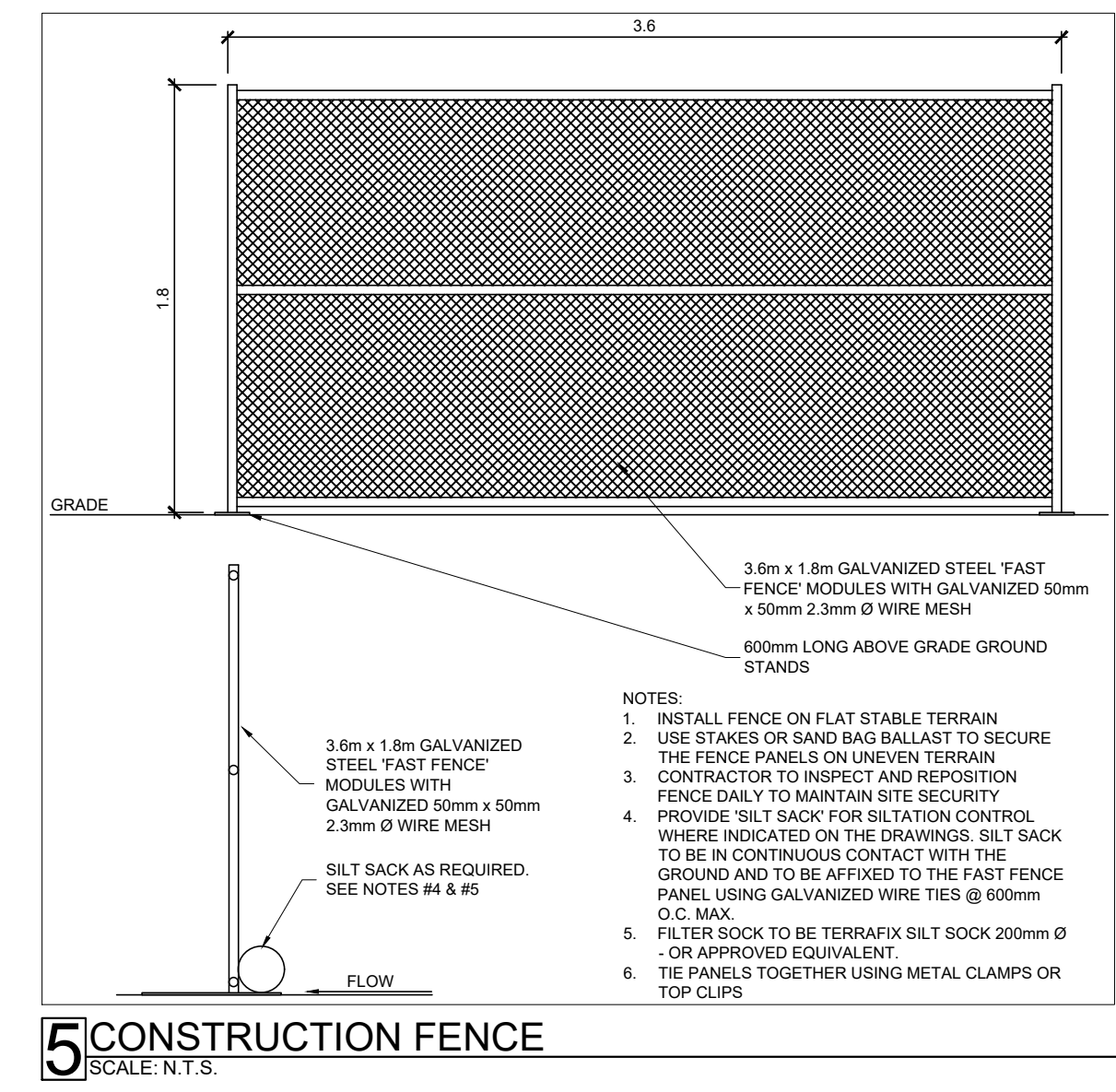
PROJECT NO.:
DRAWING NO.: **L-1**



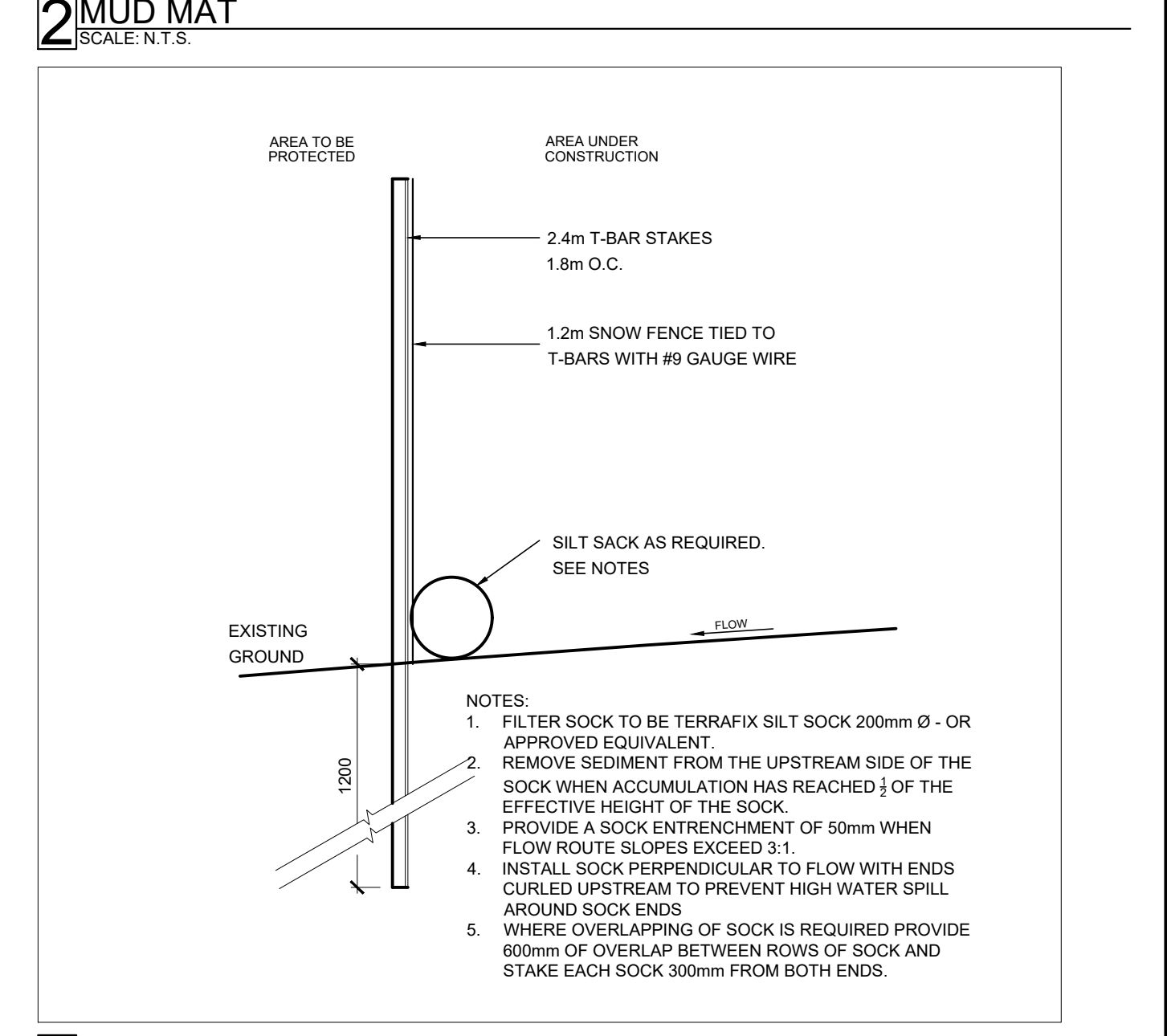
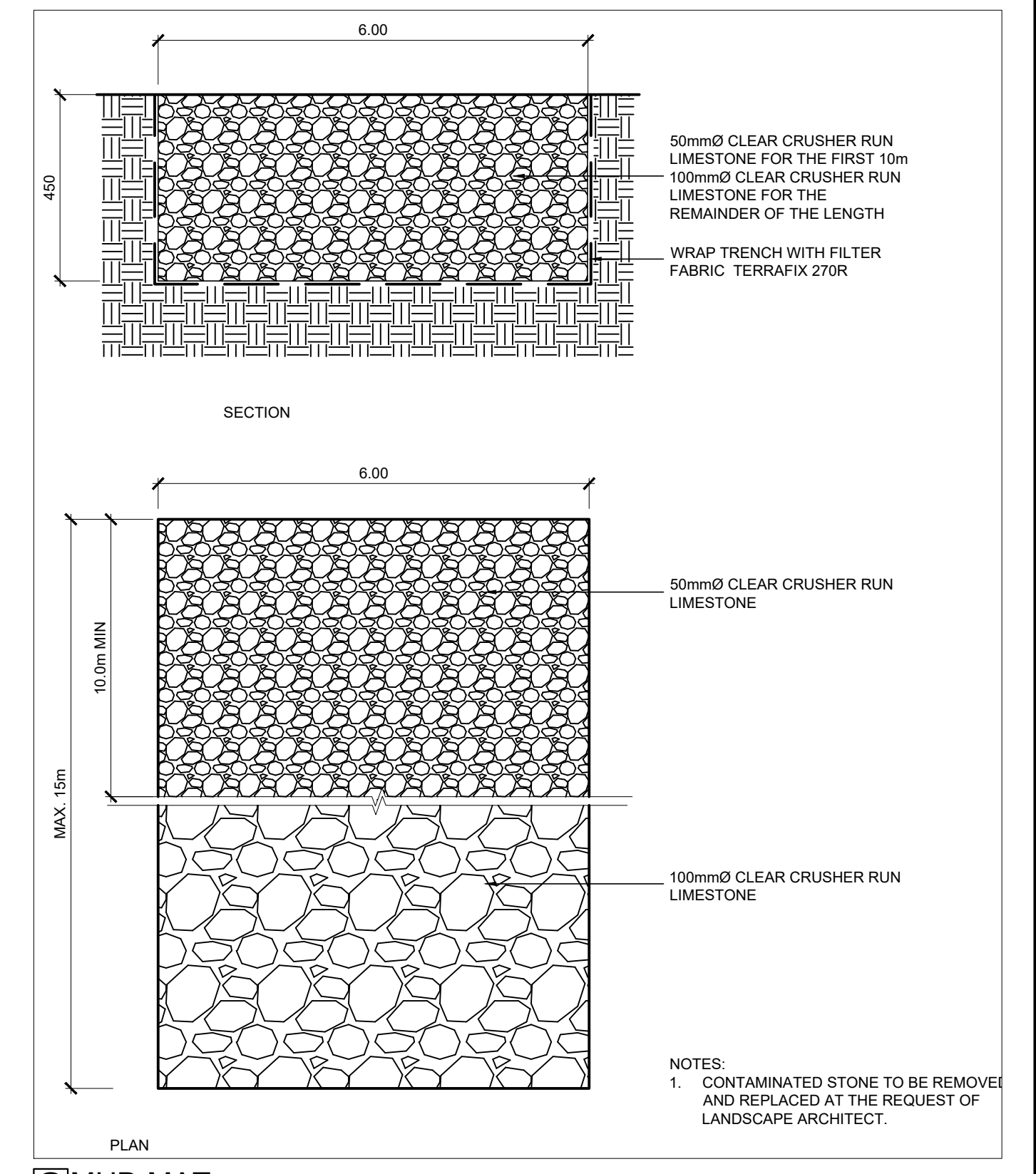
1 LAYOUT, GRADING AND PLANTING PLAN
SCALE: 1:500

LEGEND	
	TRAIL LOOP A
	TRAIL LOOP B
	TRAIL TOP UP
	SEED DISTURBED AREAS
	BIKE REPAIR STATION ON CONCRETE PAD
	BIKE RACK ON CONCRETE PAD
	PICNIC TABLE ON CONCRETE PAD
	BENCH ON CONCRETE PAD
	PROPOSED DECIDUOUS TREE
	PROPOSED CONIFEROUS TREE
	PHASE LINE
	TREE PROTECTION FENCE
	1.8m HIGH CONSTRUCTION FENCE
	1.8m HIGH CONSTRUCTION FENCE WITH SILT SOCK
	1.2m HIGH SILT FENCE

NO.	REVISION	DATE	BY
4	SILT FENCE & CONSTRUCTION FENCE DETAIL ADDED & RE-ISSUED FOR TENDER	2024.01.25	AJ
3	RE-ISSUED FOR TENDER	2023.12.07	AJ
2	ISSUED FOR TENDER	2023.11.29	AJ
1	ISSUED FOR CLIENT REVIEW	2023.05.10	AJ



GRADING NOTES:
1. NEW GRANULAR PATHWAY ELEVATIONS TO BE SET AT EXISTING GRADE UNLESS OTHERWISE NOTED ON THE DRAWINGS.
2. PROVIDE CROSS SLOPE ON ALL PATHWAYS TO FOLLOW EXISTING SITE DRAINAGE PATTERNS. MAXIMUM CROSS SLOPE 5%.



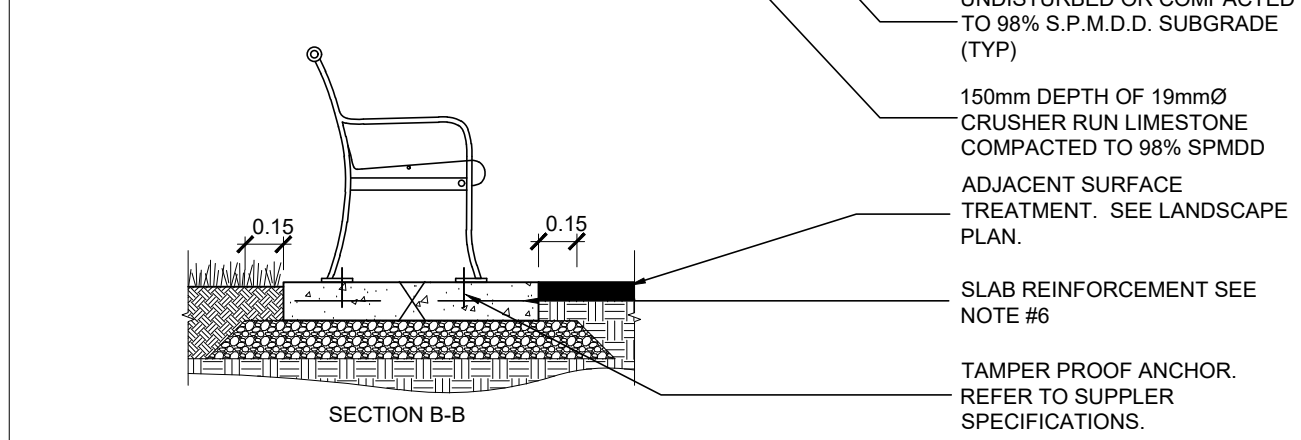
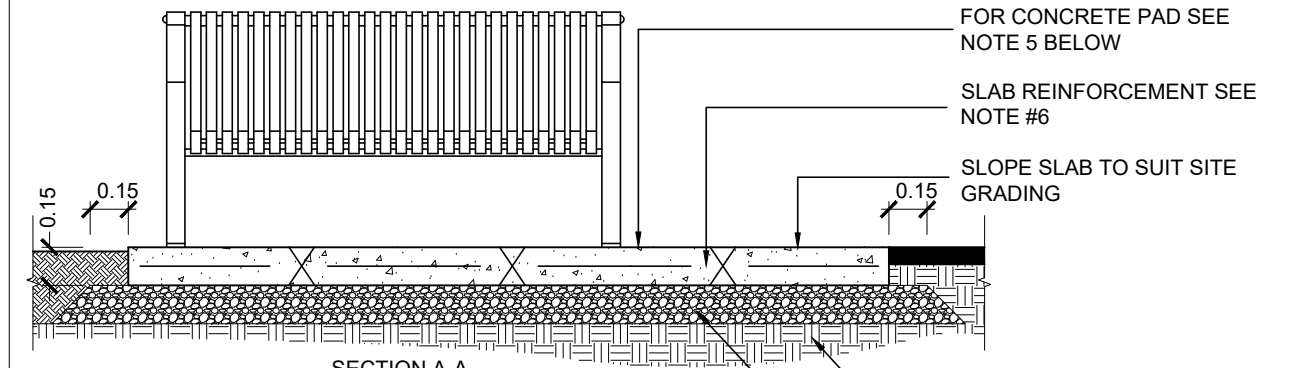
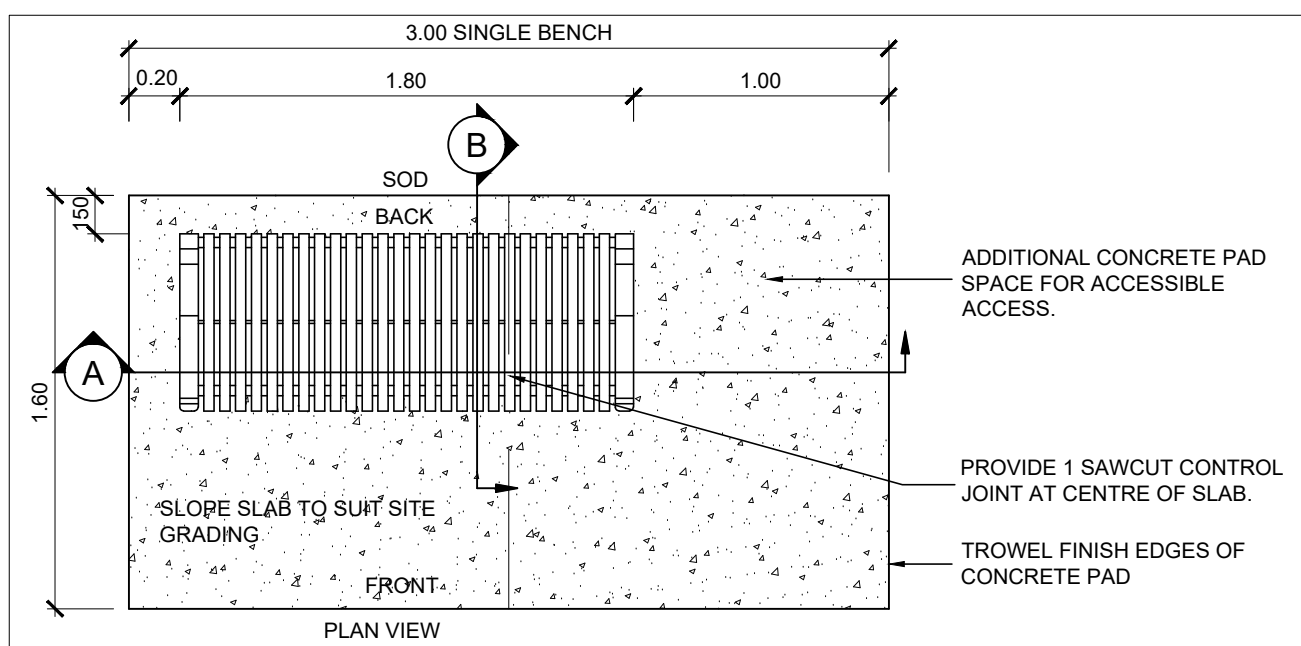
PROJECT: PEPPERLAW TRAILS

DRAWING: SITE LAYOUT PLAN, PLANTING AND GRADING

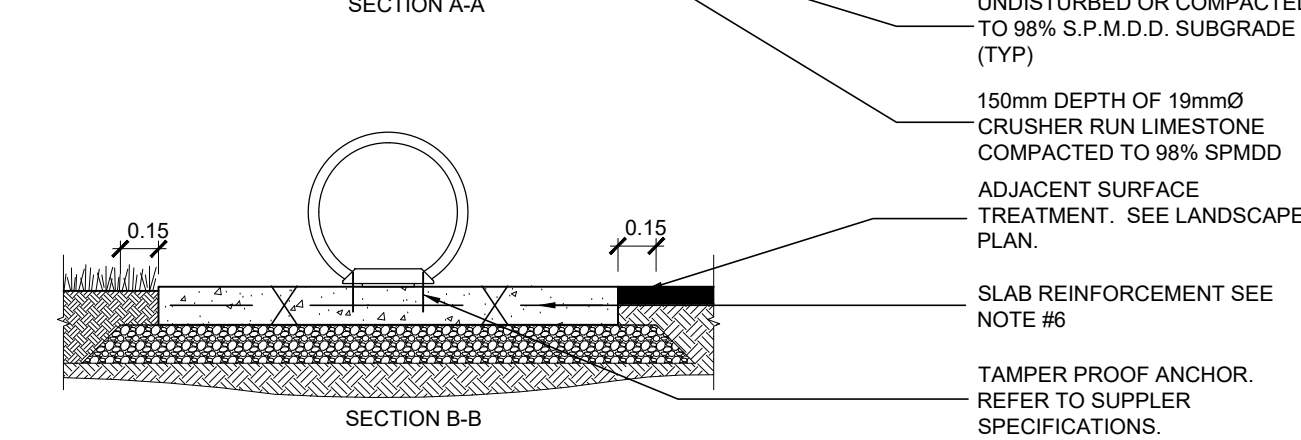
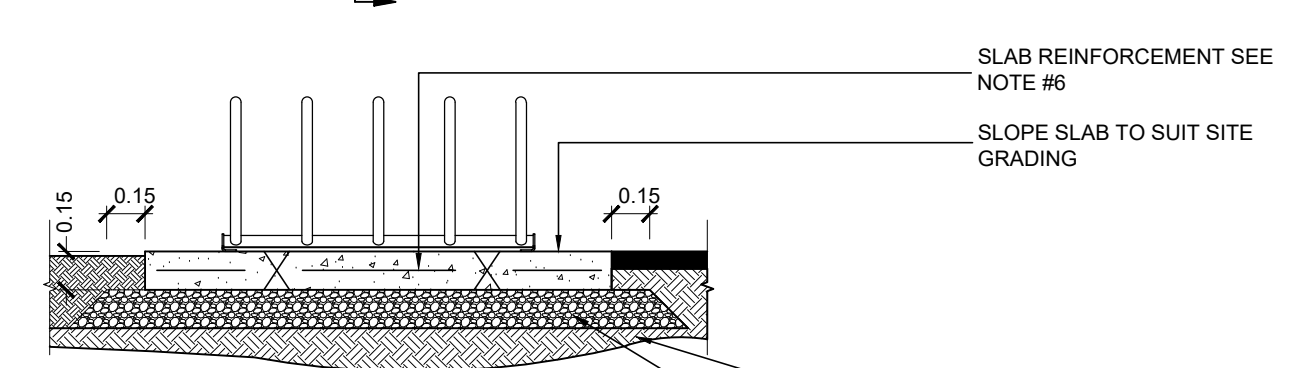
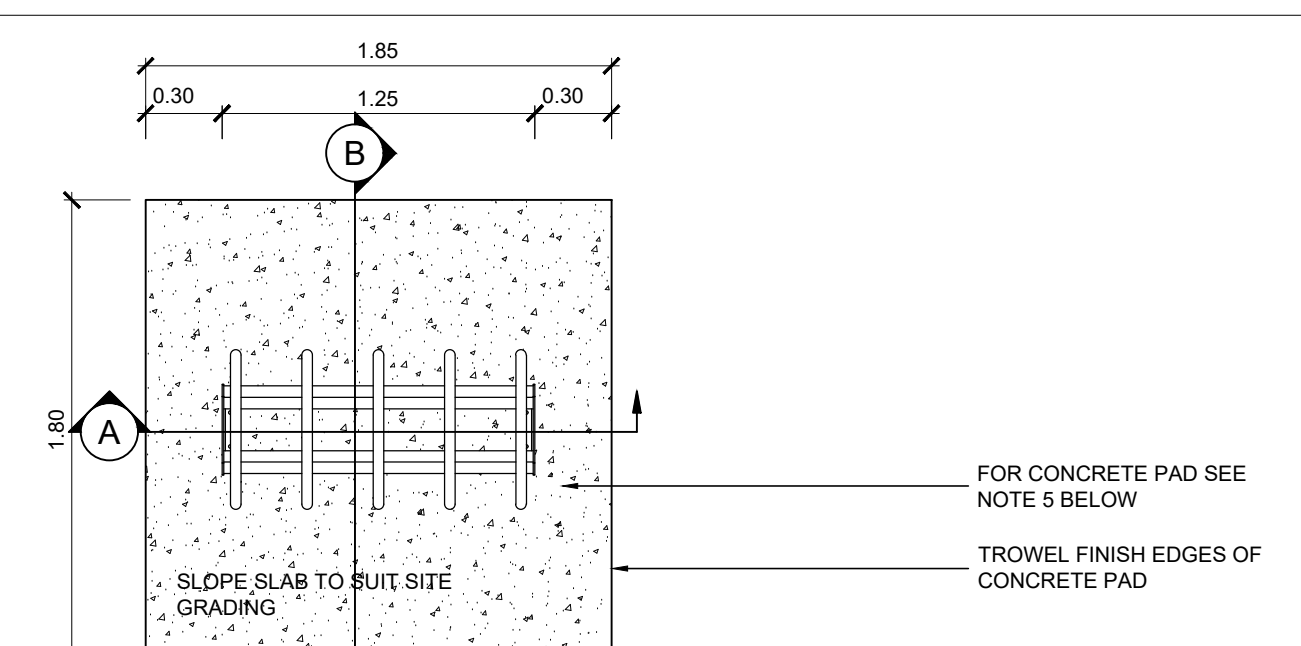


Northern Lights Landscape Architects				PROJECT NO.:
DRAWN: AJ	CHECKED: SG	APPROVED: SG	DRAWING NO.:	
SCALE: 1:500	DATE: MAY 5, 2023	DRAWING FILE: NL-020-L2.DWG		

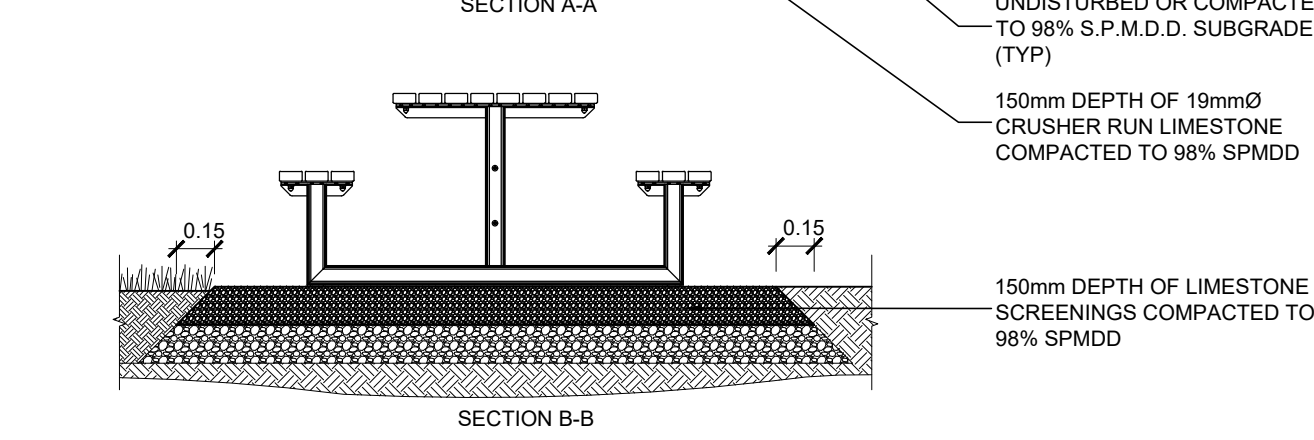
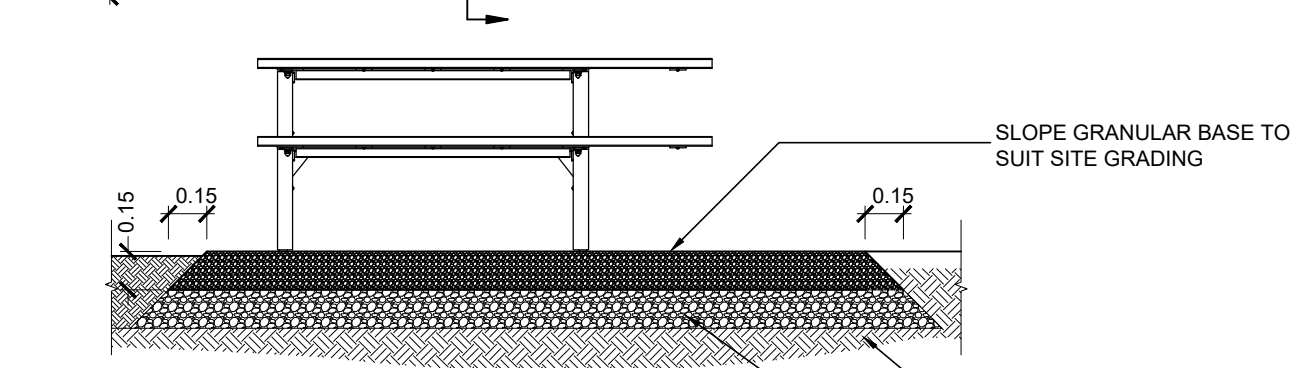
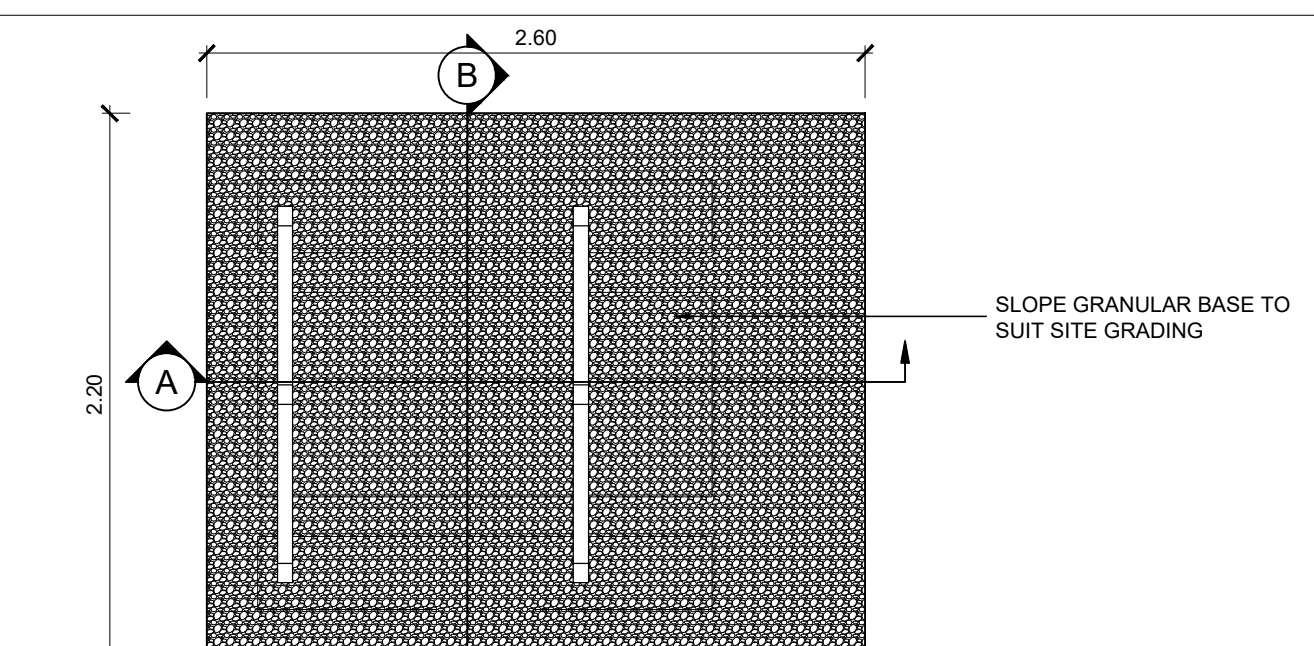
L-2



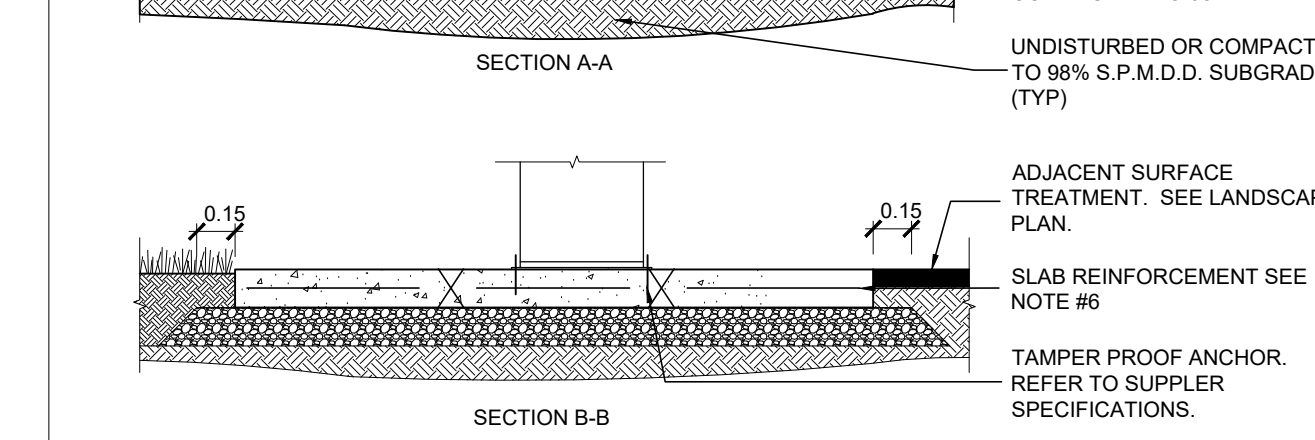
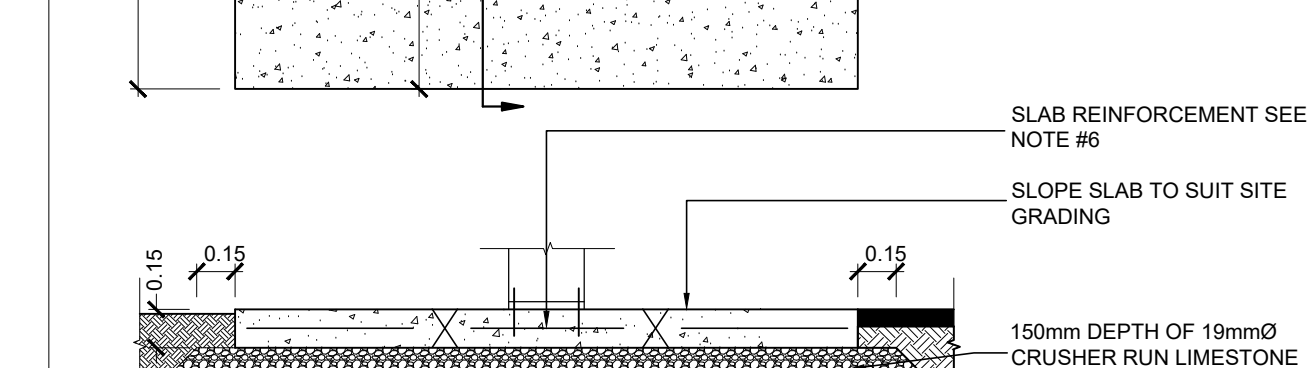
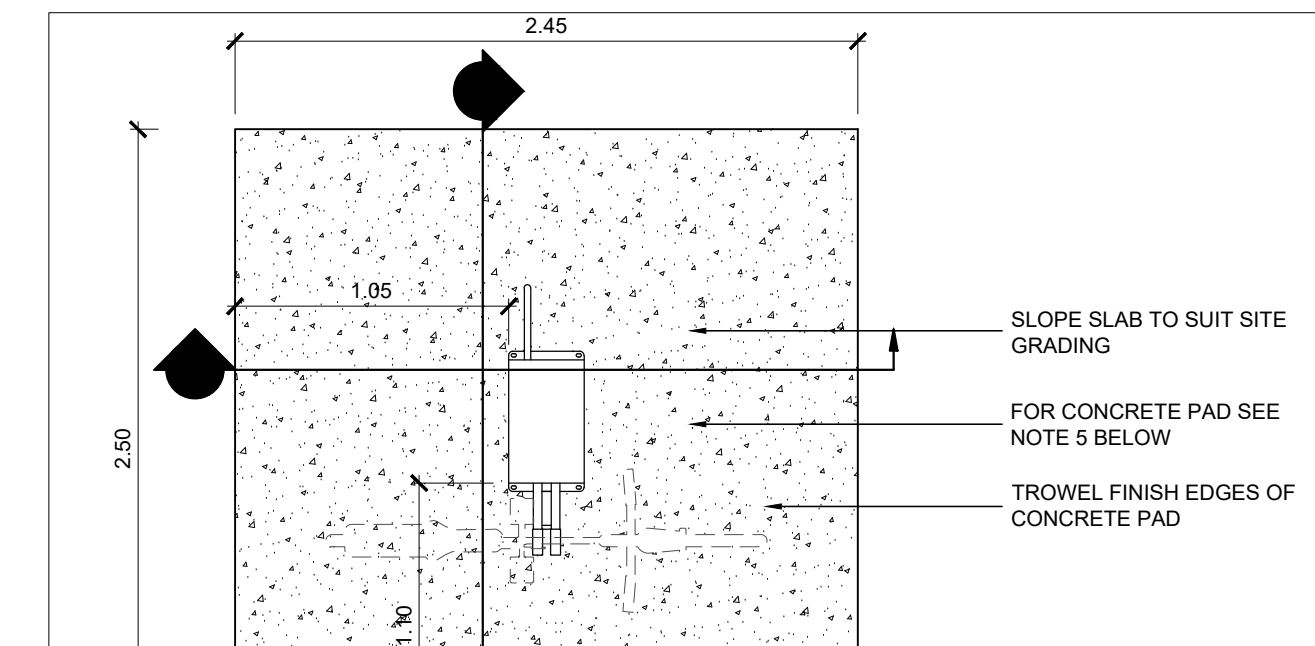
- NOTES:**
- ALL STEEL COMPONENTS ARE TO BE POWDER COATED AS PER MANUFACTURERS SPECIFICATIONS.
 - BENCH COLOUR TO BE BLACK UNLESS OTHERWISE INDICATED.
 - DELIVER BENCH PRE-ASSEMBLED.
 - PROVIDE HOLES (12mmØ) IN EACH FOOT FOR SECURING TO BASE C/W STAINLESS STEEL TAMPER PROOF HARDWARE FOR INSTALLATION.
 - PREFABRICATED BENCH BY MAGLIN FURNITURE SYSTEMS LIMITED - MODEL #MLB510-M.
 - CONCRETE PAD PROPERTIES TO INCLUDE:
 - 150mm THICKNESS
 - REINFORCED WITH 152X152 MW18.7/18.7 WELDED WIRE MESH
 - EXPOSURE CLASS 'C-1'
 - 32 Mpa STRENGTH AT 28 DAYS
 - 5-8% AIR ENTRAINMENT
 - MAXIMUM SLUMP 100mm



- NOTES:**
- ALL STEEL COMPONENTS ARE TO BE POWDER COATED AS PER MANUFACTURERS SPECIFICATIONS.
 - BICYCLE RACK COLOUR TO BE BLACK UNLESS OTHERWISE INDICATED.
 - DELIVER BICYCLE RACK PRE-ASSEMBLED.
 - PROVIDE HOLES (12mmØ) IN EACH FOOT FOR SECURING TO BASE C/W STAINLESS STEEL TAMPER PROOF HARDWARE FOR INSTALLATION.
 - PREFABRICATED BICYCLE RACK BY MAGLIN FURNITURE SYSTEMS LIMITED - MODEL #MBR350-S-S.
 - CONCRETE PAD PROPERTIES TO INCLUDE:
 - 150mm THICKNESS
 - REINFORCED WITH 152X152 MW18.7/18.7 WELDED WIRE MESH
 - EXPOSURE CLASS 'C-1'
 - 32 Mpa STRENGTH AT 28 DAYS
 - 5-8% AIR ENTRAINMENT
 - MAXIMUM SLUMP 100mm



- NOTES:**
- ALL STEEL COMPONENTS ARE TO BE POWDER COATED AS PER MANUFACTURERS SPECIFICATIONS.
 - PICNIC TABLE FRAME COLOUR TO BE POWDERCOAT BLACK UNLESS OTHERWISE INDICATED. BENCH AND TABLE SLATS TO BE HOPE BROWN COLOUR.
 - DELIVER PICNIC TABLE PRE-ASSEMBLED.
 - PREFABRICATED PICNIC TABLE BY MAGLIN FURNITURE SYSTEMS LIMITED - MODEL #MLPT210-S-R(X)-WCA.



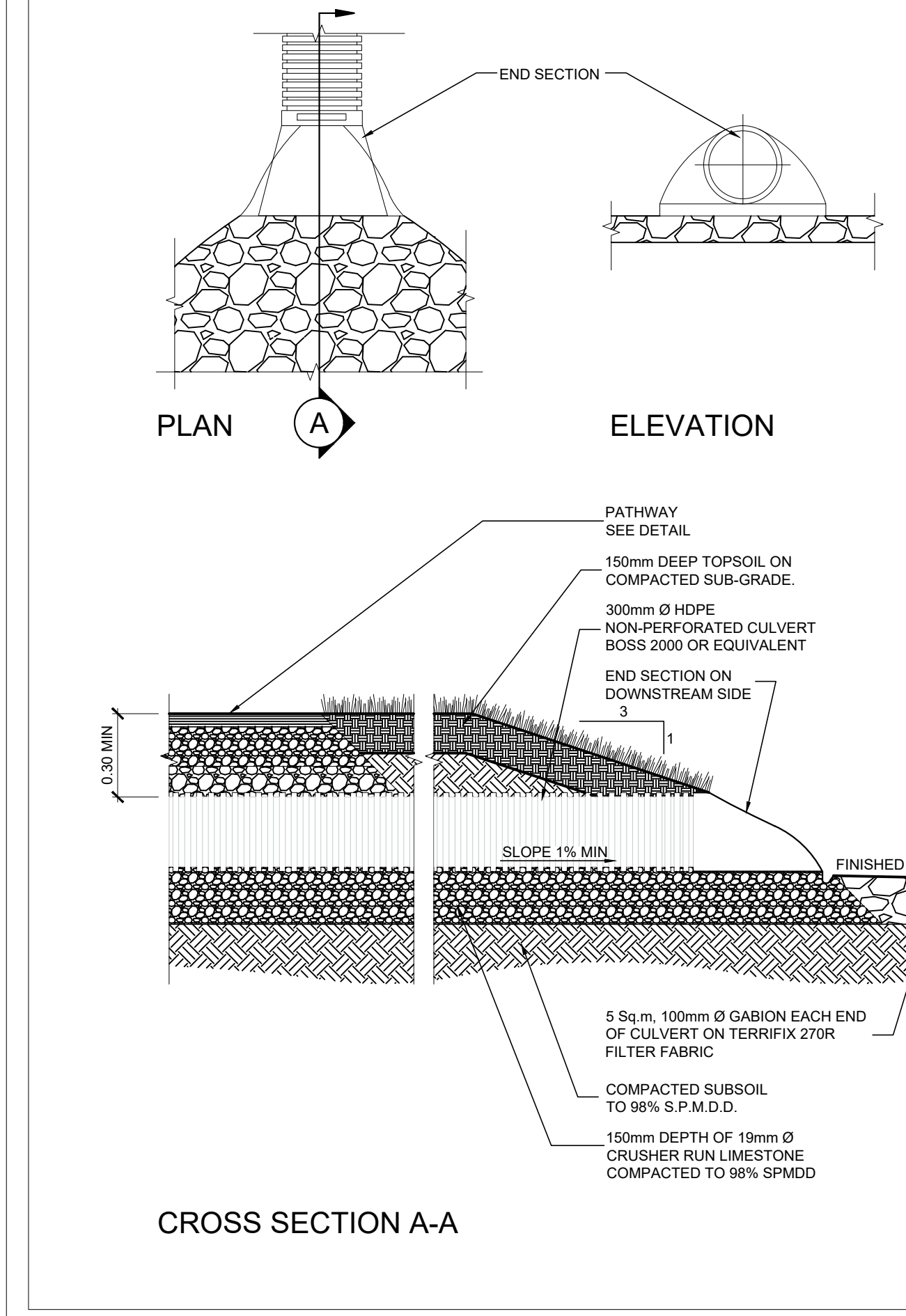
- NOTES:**
- ALL STEEL COMPONENTS ARE TO BE POWDER COATED AS PER MANUFACTURERS SPECIFICATIONS.
 - REPAIR STATION COLOUR TO BE ROYAL BLUE FINISH UNLESS OTHERWISE INDICATED.
 - DELIVER REPAIR STATION PRE-ASSEMBLED.
 - PROVIDE HOLES (12mmØ) IN EACH FOOT FOR SECURING TO BASE C/W STAINLESS STEEL TAMPER PROOF HARDWARE FOR INSTALLATION.
 - PREFABRICATED BIKE REPAIR STATION BY GREENSPOKE BIKE PARKING SOLUTIONS - MODEL #RP-V5.
 - CONCRETE PAD PROPERTIES TO INCLUDE:
 - 150mm THICKNESS
 - REINFORCED WITH 152X152 MW18.7/18.7 WELDED WIRE MESH
 - EXPOSURE CLASS 'C-1'
 - 32 Mpa STRENGTH AT 28 DAYS
 - 5-8% AIR ENTRAINMENT
 - MAXIMUM SLUMP 100mm

1 BENCH
SCALE: 1:30

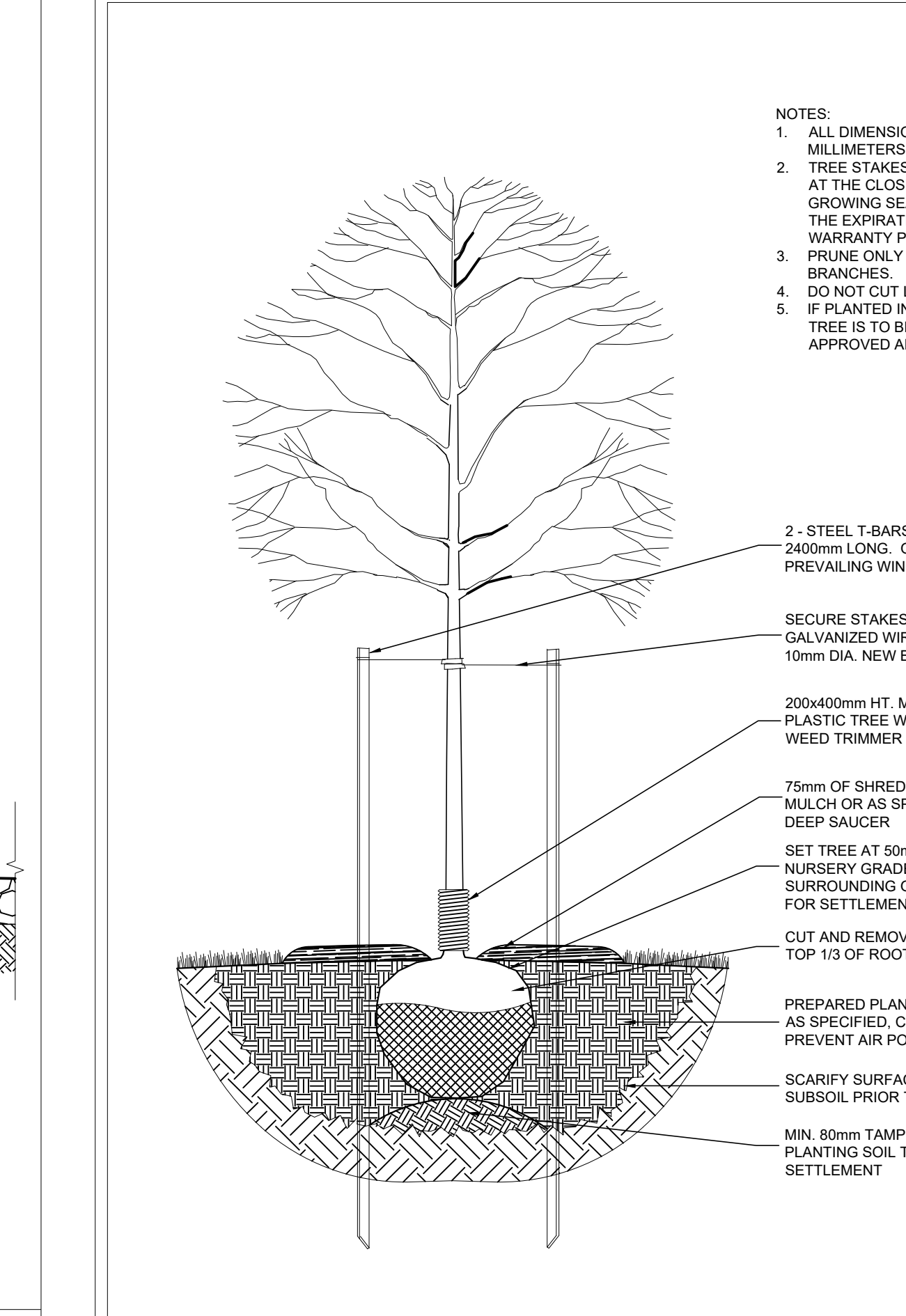
2 BICYCLE RACK
SCALE: 1:30

3 PICNIC TABLE
SCALE: 1:30

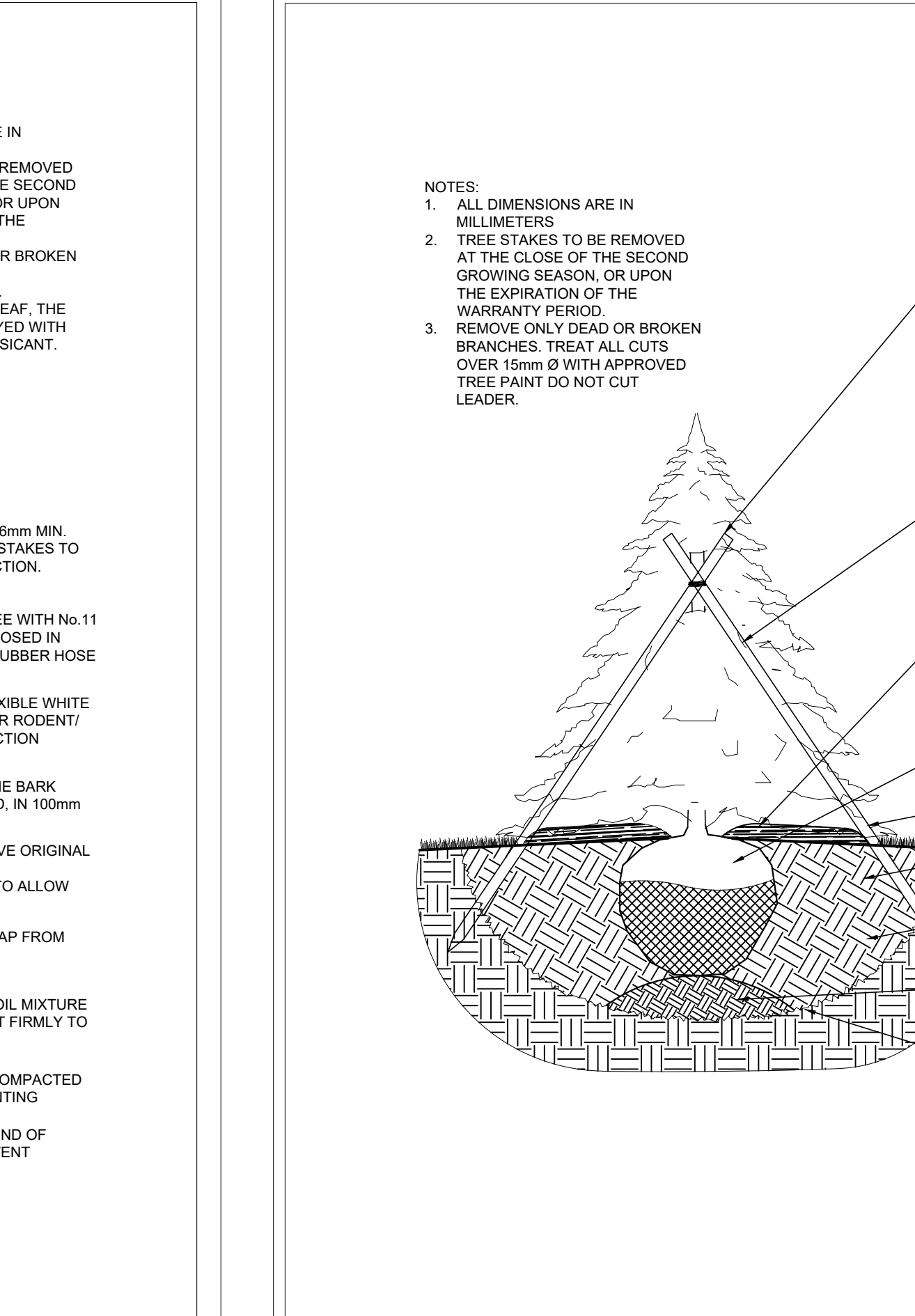
4 BIKE REPAIR STATION
SCALE: 1:30



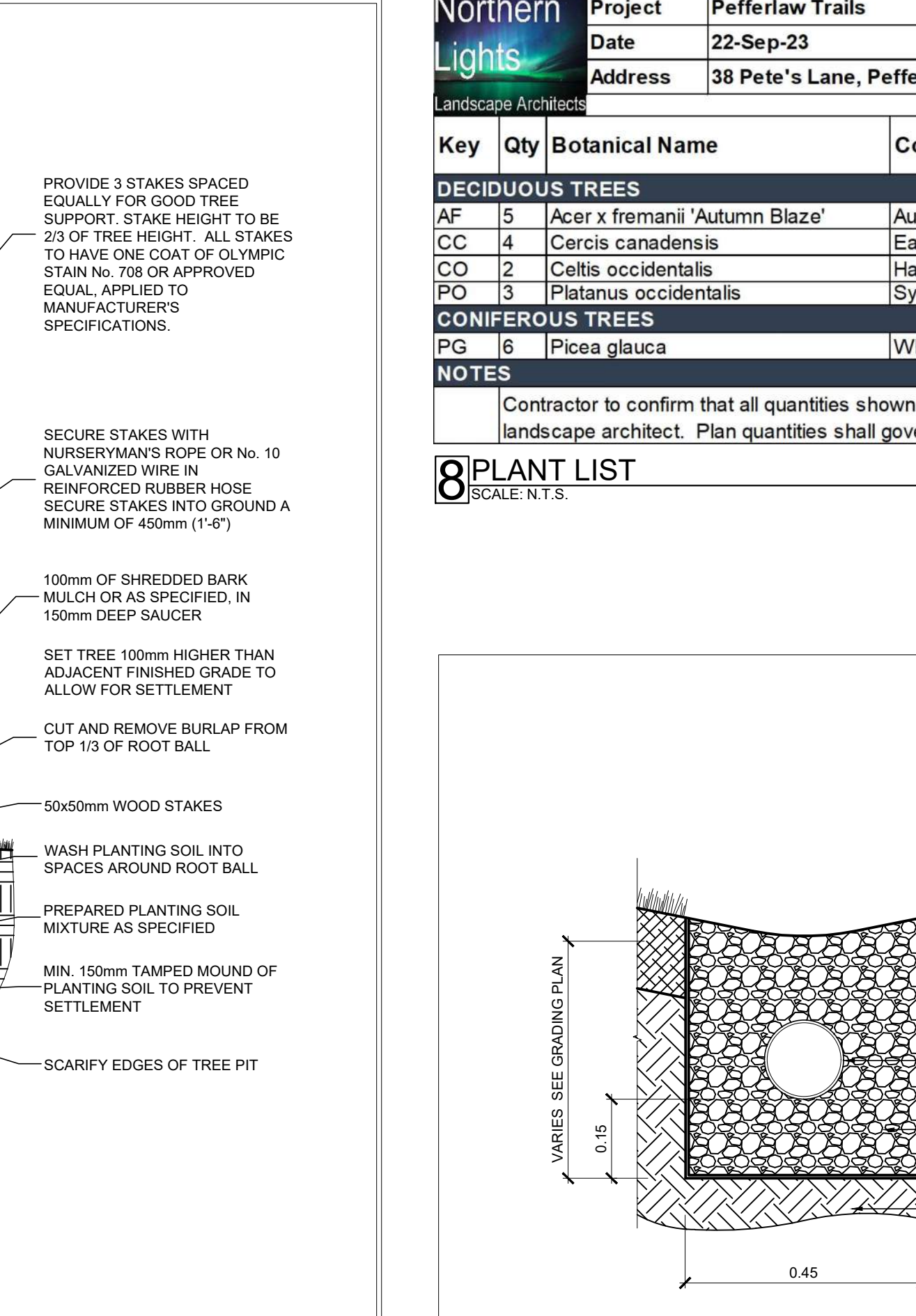
5 CULVERT
SCALE: N.T.S.



6 DECIDUOUS TREE PLANTING
SCALE: N.T.S.



7 CONIFEROUS TREE PLANTING
SCALE: N.T.S.



8 DRAINAGE GALLERY
SCALE: 1:10

Project		Pefferlaw Trails		Plant List		
Date	22-Sep-23	Ht (m)	Cal (mm)	Cond	Remarks	
Address	38 Pete's Lane, Pefferlaw					
DECIDUOUS TREES						
AF	5	Acer x fremanii 'Autumn Blaze'	Autumn Blaze Maple	3-3.5	60	WB
CC	4	Cercis canadensis	Eastern Redbud	3-3.5	60	WB
CO	2	Celtis occidentalis	Hackberry	3-3.5	60	WB
PO	3	Platanus occidentalis	Sycamore	3-3.5	61	WB
CONIFEROUS TREES						
PG	6	Picea glauca	White Spruce	1.8		WB

NOTES:
Contractor to confirm that all quantities shown conform with plan quantities. Any discrepancies to be reported to the landscape architect. Plan quantities shall govern over the plant list quantities.

LEGEND

	PHASE 1 TRAIL		PROPOSED DECIDUOUS TREE
	PHASE 2 TRAIL		PROPOSED CONIFEROUS TREE
	SOD DISTURBED AREAS		
	BIKE REPAIR STATION ON CONCRETE PAD		
	BIKE RACK ON CONCRETE PAD		
	PICNIC TABLE ON CONCRETE PAD		
	BENCH ON CONCRETE PAD		

NO.	REVISION	DATE	BY
3	RE-ISSUED FOR TENDER	2023.12.07	AJ
2	ISSUED FOR TENDER	2023.11.29	AJ
1	ISSUED FOR CLIENT REVIEW	2023.05.10	AJ

PROJECT: **PEFFERLAW TRAILS**

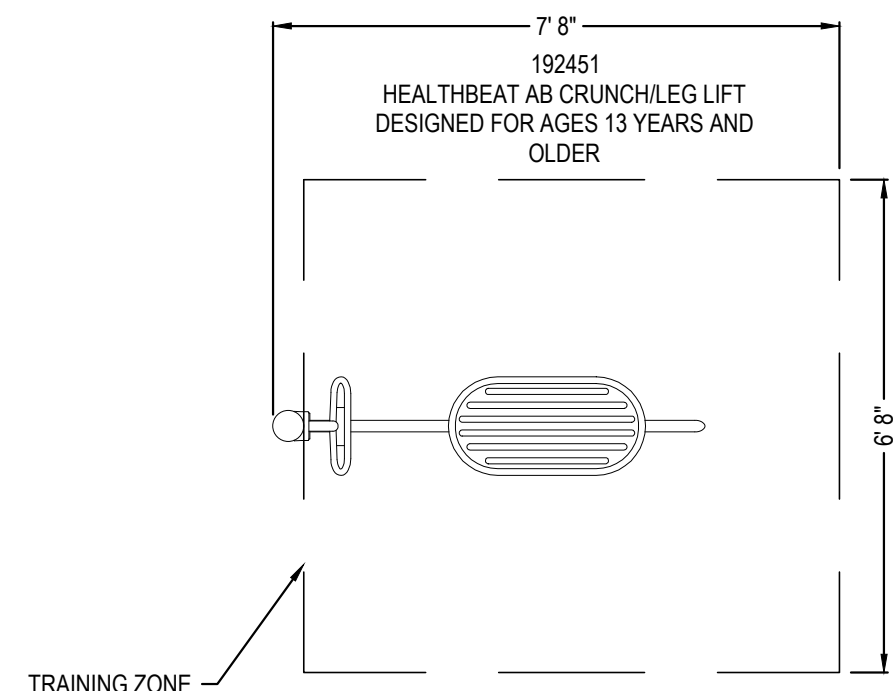
DRAWING: **DETAILS**

GEORGINA Northern Lights Landscape Architects

DRAWN: AJ	CHECKED: SG	APPROVED: SG	DRAWING NO.:
SCALE: 1:400	DATE: MAY 5, 2023	DRAWING FILE: NL-020-L2.DWG	L-3



LANDSCAPE STRUCTURES INC.
601 7TH STREET SOUTH
DELANO, MN 55328
TOLL FREE: 1-888-438-6574
PHONE: (763) 972-5200
FAX: (763) 972-3185
www.playisi.com



TOP VIEW

SPECIFICATIONS
TOTAL SQUARE FOOTAGE: 160 SQ FT
MAX FALL HEIGHT: 21"

MANUFACTURER NOTES:

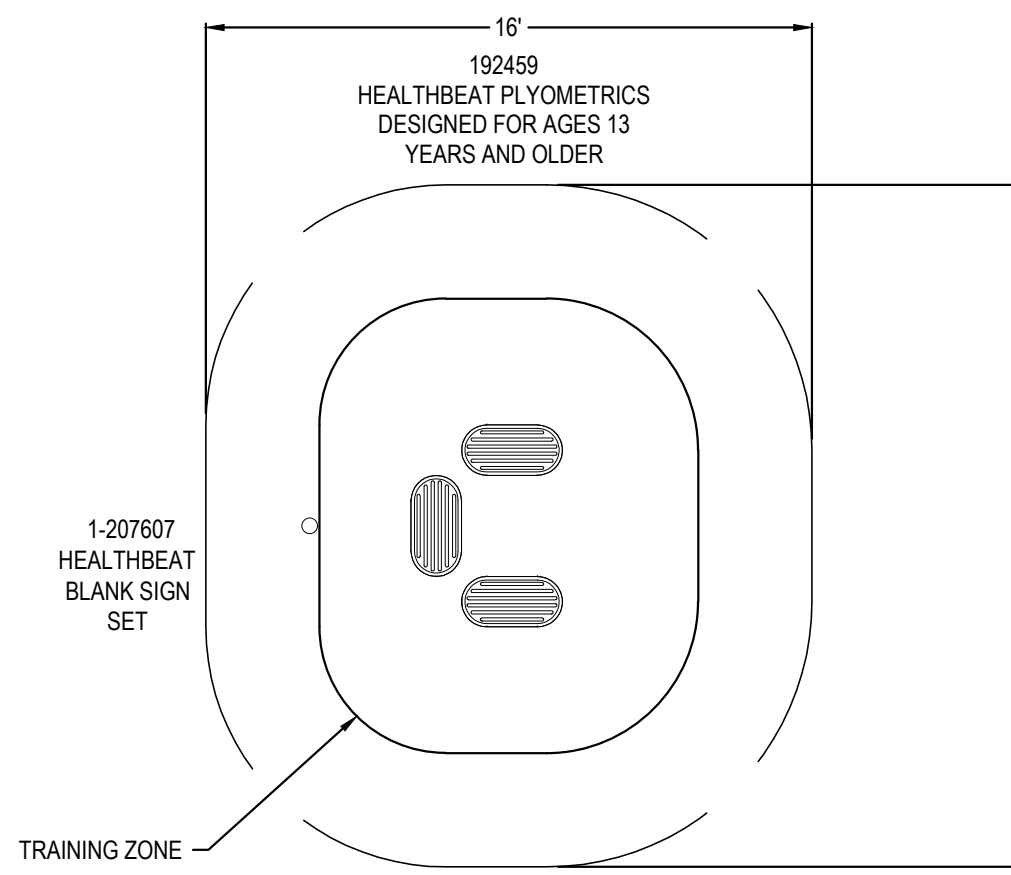
- PLEASE CONTACT MANUFACTURER FOR VARIOUS COLOR OPTIONS.

NOTES:

- INSTALLATION TO BE COMPLETED IN ACCORDANCE WITH MANUFACTURER'S SPECIFICATIONS.
- THIS PLAY AREA & EQUIPMENT IS DESIGNED FOR AGES 13+ YEARS.
- IT IS THE MANUFACTURER'S OPINION THAT THIS PLAY AREA DOES NOT CONFORM TO THE A.D.A. ACCESSIBILITY GUIDELINES.
- THIS CONCEPTUAL PLAN WAS BASED ON INFORMATION AVAILABLE TO US. PRIOR TO CONSTRUCTION, DETAILED SITE INFORMATION, INCLUDING SITE DIMENSIONS, TOPOGRAPHY, EXISTING UTILITIES, SOIL CONDITIONS, AND DRAINAGE SOLUTIONS SHOULD BE OBTAINED, EVALUATED & UTILIZED IN THE FINAL DESIGN.
- CHOOSE A PROTECTIVE SURFACING MATERIAL THAT HAS A CRITICAL HEIGHT VALUE OF AT LEAST THE HEIGHT OF THE HIGHEST ACCESSIBLE PART/FALL HEIGHT OF THE ADJACENT EQUIPMENT (REFER TO LOCAL SAFETY CODES).
- REFER TO 300-007B FOR LEGEND.
- CONTRACTORS NOTE: FOR PRODUCT AND COMPANY INFORMATION VISIT www.CADdetails.com/info REFERENCE NUMBER 300-167.



LANDSCAPE STRUCTURES INC.
601 7TH STREET SOUTH
DELANO, MN 55328
TOLL FREE: 1-888-438-6574
PHONE: (763) 972-5200
FAX: (763) 972-3185
www.playisi.com



TOP VIEW

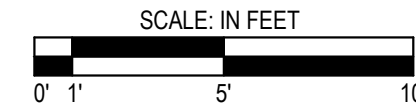
SPECIFICATIONS
TOTAL SQUARE FOOTAGE: 250 SQ FT
MAX FALL HEIGHT: 16"

MANUFACTURER NOTES:

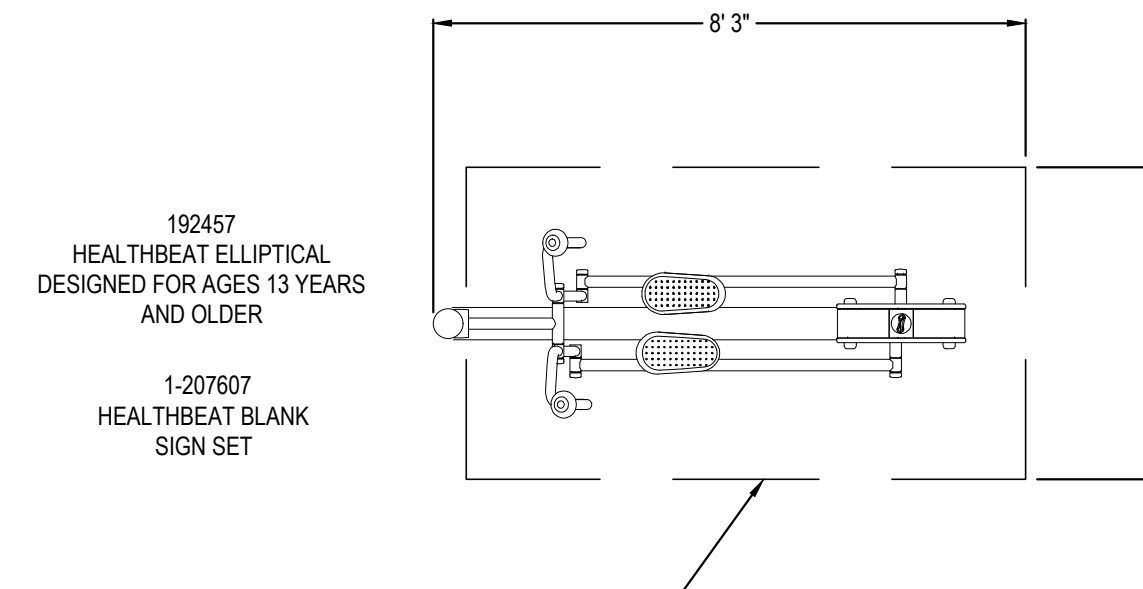
- PLEASE CONTACT MANUFACTURER FOR VARIOUS COLOR OPTIONS.

NOTES:

- INSTALLATION TO BE COMPLETED IN ACCORDANCE WITH MANUFACTURER'S SPECIFICATIONS.
- THIS PLAY AREA & EQUIPMENT IS DESIGNED FOR AGES 13+ YEARS.
- IT IS THE MANUFACTURER'S OPINION THAT THIS PLAY AREA DOES NOT CONFORM TO THE A.D.A. ACCESSIBILITY GUIDELINES.
- THIS CONCEPTUAL PLAN WAS BASED ON INFORMATION AVAILABLE TO US. PRIOR TO CONSTRUCTION, DETAILED SITE INFORMATION, INCLUDING SITE DIMENSIONS, TOPOGRAPHY, EXISTING UTILITIES, SOIL CONDITIONS, AND DRAINAGE SOLUTIONS SHOULD BE OBTAINED, EVALUATED & UTILIZED IN THE FINAL DESIGN.
- CHOOSE A PROTECTIVE SURFACING MATERIAL THAT HAS A CRITICAL HEIGHT VALUE OF AT LEAST THE HEIGHT OF THE HIGHEST ACCESSIBLE PART/FALL HEIGHT OF THE ADJACENT EQUIPMENT (REFER TO LOCAL SAFETY CODES).
- REFER TO 300-007B FOR LEGEND.
- CONTRACTORS NOTE: FOR PRODUCT AND COMPANY INFORMATION VISIT www.CADdetails.com/info REFERENCE NUMBER 300-162.



LANDSCAPE STRUCTURES INC.
601 7TH STREET SOUTH
DELANO, MN 55328
TOLL FREE: 1-888-438-6574
PHONE: (763) 972-5200
FAX: (763) 972-3185
www.playisi.com



TOP VIEW

SPECIFICATIONS
TOTAL SQUARE FOOTAGE: 175 SQ FT
MAX FALL HEIGHT: 20"

MANUFACTURER NOTES:

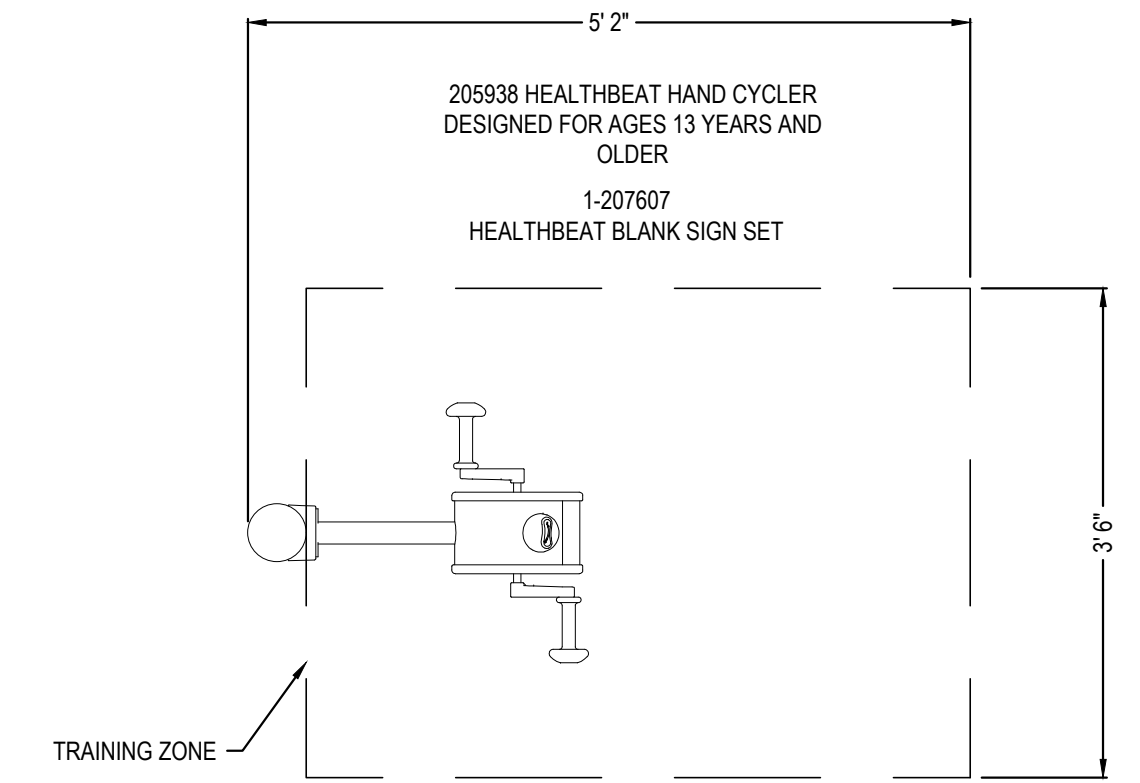
- PLEASE CONTACT MANUFACTURER FOR VARIOUS COLOR OPTIONS.

NOTES:

- INSTALLATION TO BE COMPLETED IN ACCORDANCE WITH MANUFACTURER'S SPECIFICATIONS.
- THIS PLAY AREA & EQUIPMENT IS DESIGNED FOR AGES 13+ YEARS.
- IT IS THE MANUFACTURER'S OPINION THAT THIS PLAY AREA DOES CONFORM TO THE A.D.A. ACCESSIBILITY GUIDELINES, ASSUMING AN ACCESSIBLE PROTECTIVE SURFACING IS PROVIDED, AS INDICATED, OR WITHIN THE ENTIRE USE ZONE.
- THIS CONCEPTUAL PLAN WAS BASED ON INFORMATION AVAILABLE TO US. PRIOR TO CONSTRUCTION, DETAILED SITE INFORMATION, INCLUDING SITE DIMENSIONS, TOPOGRAPHY, EXISTING UTILITIES, SOIL CONDITIONS, AND DRAINAGE SOLUTIONS SHOULD BE OBTAINED, EVALUATED & UTILIZED IN THE FINAL DESIGN.
- CHOOSE A PROTECTIVE SURFACING MATERIAL THAT HAS A CRITICAL HEIGHT VALUE OF AT LEAST THE HEIGHT OF THE HIGHEST ACCESSIBLE PART/FALL HEIGHT OF THE ADJACENT EQUIPMENT (REFER TO LOCAL SAFETY CODES).
- CONTRACTORS NOTE: FOR PRODUCT AND COMPANY INFORMATION VISIT www.CADdetails.com/info REFERENCE NUMBER 300-507.



LANDSCAPE STRUCTURES INC.
601 7TH STREET SOUTH
DELANO, MN 55328
TOLL FREE: 1-888-438-6574
PHONE: (763) 972-5200
FAX: (763) 972-3185
www.playisi.com



TOP VIEW

MANUFACTURER NOTES:

- PLEASE CONTACT MANUFACTURER FOR VARIOUS COLOR OPTIONS.

NOTES:

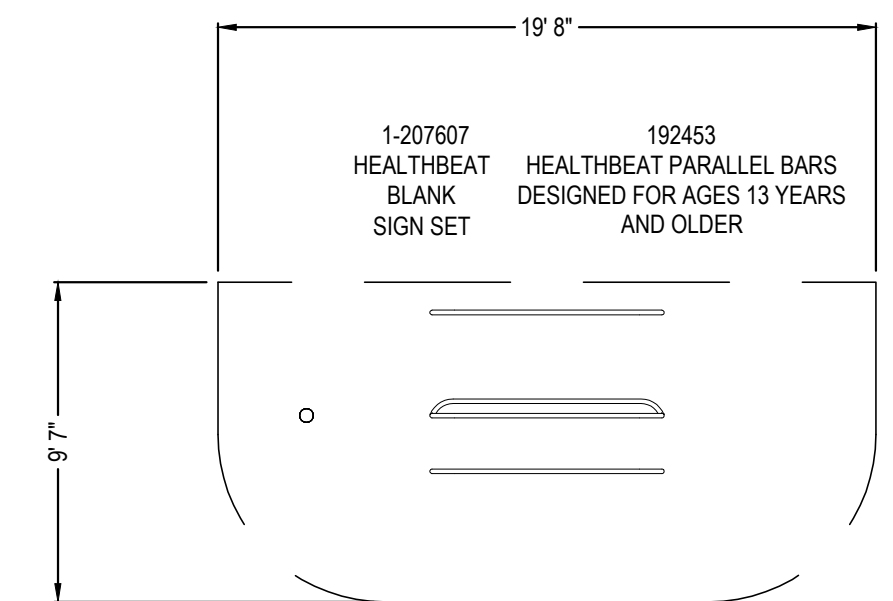
- INSTALLATION TO BE COMPLETED IN ACCORDANCE WITH MANUFACTURER'S SPECIFICATIONS.
- THIS PLAY AREA & EQUIPMENT IS DESIGNED FOR AGES 13+ YEARS.
- IT IS THE MANUFACTURER'S OPINION THAT THIS PLAY AREA DOES CONFORM TO THE A.D.A. ACCESSIBILITY GUIDELINES, ASSUMING AN ACCESSIBLE PROTECTIVE SURFACING IS PROVIDED, AS INDICATED, OR WITHIN THE ENTIRE USE ZONE.
- THIS CONCEPTUAL PLAN WAS BASED ON INFORMATION AVAILABLE TO US. PRIOR TO CONSTRUCTION, DETAILED SITE INFORMATION, INCLUDING SITE DIMENSIONS, TOPOGRAPHY, EXISTING UTILITIES, SOIL CONDITIONS, AND DRAINAGE SOLUTIONS SHOULD BE OBTAINED, EVALUATED & UTILIZED IN THE FINAL DESIGN.
- CHOOSE A PROTECTIVE SURFACING MATERIAL THAT HAS A CRITICAL HEIGHT VALUE OF AT LEAST THE HEIGHT OF THE HIGHEST ACCESSIBLE PART/FALL HEIGHT OF THE ADJACENT EQUIPMENT (REFER TO LOCAL SAFETY CODES).
- CONTRACTORS NOTE: FOR PRODUCT AND COMPANY INFORMATION VISIT www.CADdetails.com/info REFERENCE NUMBER 300-509.

1 EXERCISE EQUIPMENT

SCALE: N.T.S.



LANDSCAPE STRUCTURES INC.
601 7TH STREET SOUTH
DELANO, MN 55328
TOLL FREE: 1-888-438-6574
PHONE: (763) 972-5200
FAX: (763) 972-3185
www.playisi.com



TOP VIEW

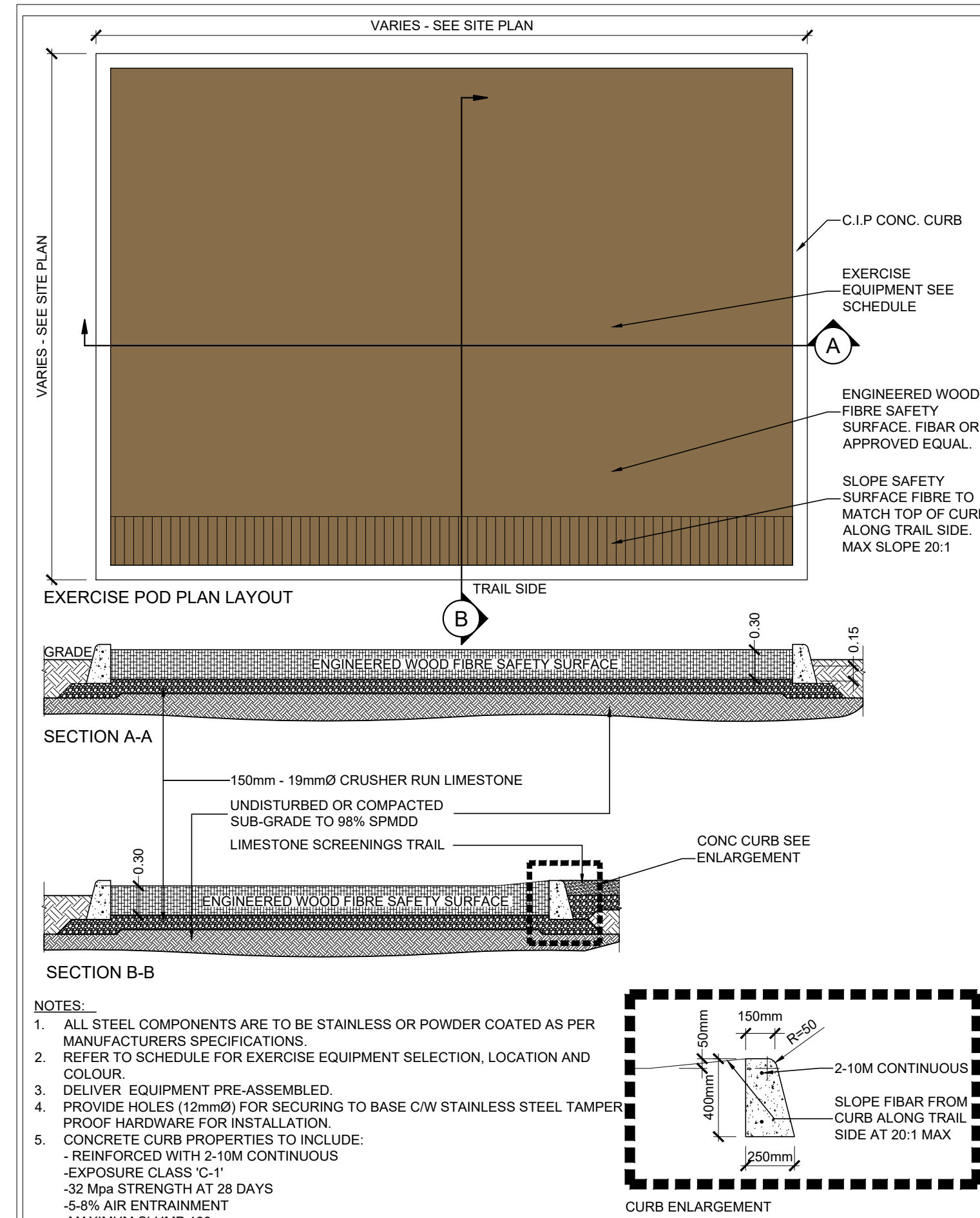
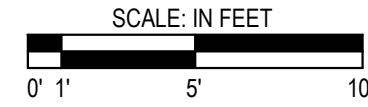
SPECIFICATIONS
TOTAL SQUARE FOOTAGE: 261 SQ FT
MAX FALL HEIGHT: 46"

MANUFACTURER NOTES:

- PLEASE CONTACT MANUFACTURER FOR VARIOUS COLOR OPTIONS.

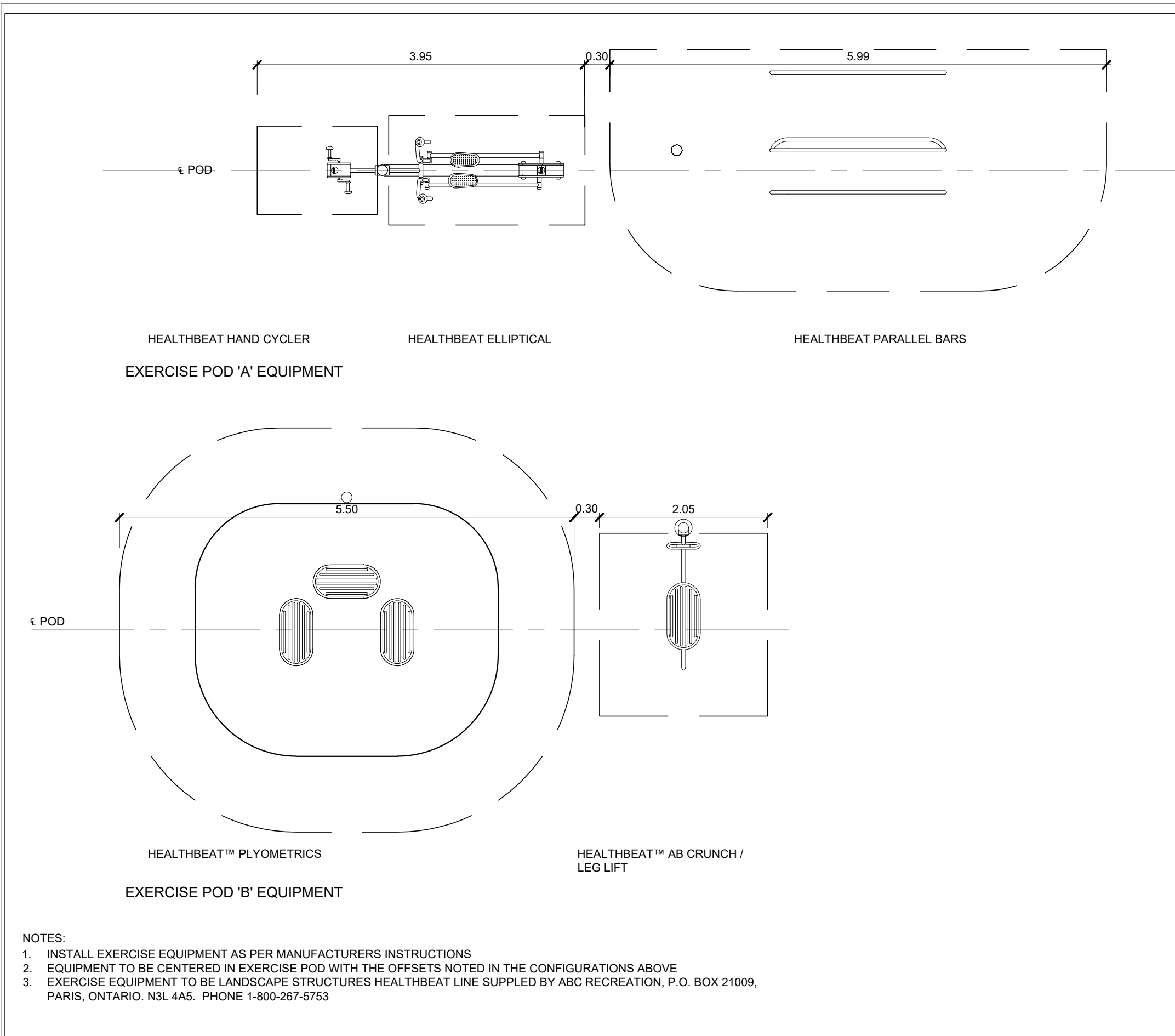
NOTES:

- INSTALLATION TO BE COMPLETED IN ACCORDANCE WITH MANUFACTURER'S SPECIFICATIONS.
- THIS PLAY AREA & EQUIPMENT IS DESIGNED FOR AGES 13+ YEARS.
- IT IS THE MANUFACTURER'S OPINION THAT THIS PLAY AREA DOES CONFORM TO THE A.D.A. ACCESSIBILITY GUIDELINES, ASSUMING AN ACCESSIBLE PROTECTIVE SURFACING IS PROVIDED, AS INDICATED, OR WITHIN THE ENTIRE USE ZONE.
- THIS CONCEPTUAL PLAN WAS BASED ON INFORMATION AVAILABLE TO US. PRIOR TO CONSTRUCTION, DETAILED SITE INFORMATION, INCLUDING SITE DIMENSIONS, TOPOGRAPHY, EXISTING UTILITIES, SOIL CONDITIONS, AND DRAINAGE SOLUTIONS SHOULD BE OBTAINED, EVALUATED & UTILIZED IN THE FINAL DESIGN.
- CHOOSE A PROTECTIVE SURFACING MATERIAL THAT HAS A CRITICAL HEIGHT VALUE OF AT LEAST THE HEIGHT OF THE HIGHEST ACCESSIBLE PART/FALL HEIGHT OF THE ADJACENT EQUIPMENT (REFER TO LOCAL SAFETY CODES).
- CONTRACTORS NOTE: FOR PRODUCT AND COMPANY INFORMATION VISIT www.CADdetails.com/info REFERENCE NUMBER 300-508.



3 EXERCISE POD LAYOUT

SCALE: N.T.S.



4 EXERCISE EQUIPMENT

SCALE: N.T.S.

LEGEND

	PHASE 1 TRAIL		BIKE REPAIR STATION ON CONCRETE PAD		PROPOSED DECIDUOUS TREE
	PHASE 2 TRAIL		BIKE RACK ON CONCRETE PAD		PROPOSED CONIFEROUS TREE
	SOD DISTURBED AREAS		PICNIC TABLE ON CONCRETE PAD		
			BENCH ON CONCRETE PAD		

NO.	REVISION	DATE	BY
3	RE-ISSUED FOR TENDER	2023.12.07	AJ
2	ISSUED FOR TENDER	2023.11.29	AJ
1	ISSUED FOR CLIENT REVIEW	2023.05.10	AJ

PROJECT: PEFFERLAW TRAILS

DRAWING: DETAILS



Northern Lights Landscape Architects

DRAWN: AJ	CHECKED: SG	APPROVED: SG	PROJECT NO.:
SCALE: 1:400	DATE: MAY 5, 2023	DRAWING FILE: NL-020-L2.DWG	DRAWING NO.:

L-4