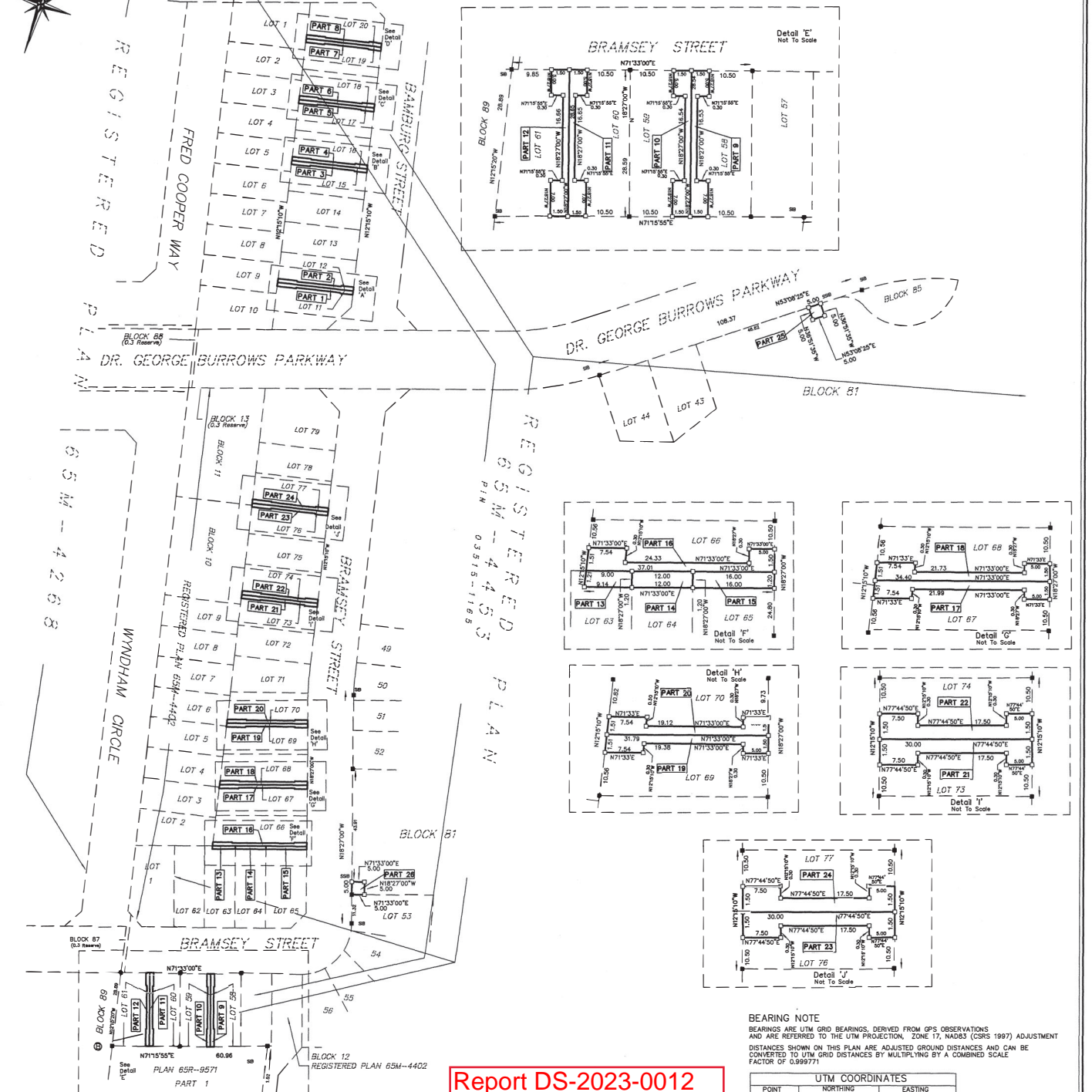


PLAN OF SURVEY OF  
 PART OF LOTS 11,12,15,16,17  
 18,19,20,58,59,60,61,63,64,65,66  
 67,68,69,70,73,74,76,77  
 AND PART OF BLOCK 81  
 REGISTERED PLAN 65M-4453  
 TOWN OF GEORGINA  
 REGIONAL MUNICIPALITY OF YORK  
 DAVID J. PESCE SURVEYING  
 SCALE 1:750

METRIC  
 DISTANCES SHOWN ON THIS  
 PLAN ARE IN METRES AND  
 CAN BE CONVERTED TO FEET  
 BY DIVIDING BY 0.3048



**SURVEYOR'S CERTIFICATE**  
 I CERTIFY THAT:  
 1.) THIS SURVEY AND PLAN ARE CORRECT AND IN ACCORDANCE WITH THE SURVEY ACT, THE SURVEYORS ACT AND THE LAND TITLES ACT, AND THE REGULATIONS MADE UNDER THEM.  
 2.) THE SURVEY WAS COMPLETED ON THE 13TH DAY OF MAY 2015  
 DAVID J. PESCE B.Sc.  
 ONTARIO LAND SURVEYOR

**NOTE**  
 ALL SURVEY MONUMENTS FOUND WERE SET BY DAVID J. PESCE SURVEYING  
 ALL SURVEY MONUMENTS ARE 8" UNLESS NOTED  
 ALL LOT CORNER 18" HAVE BEEN RE-SET WITH 58BS, WHERE NOTED

**Report DS-2023-0012  
 Attachment 2**

I REQUIRE THIS PLAN TO BE DEPOSITED UNDER THE LAND TITLES ACT

DATE May 13/15  
 DAVID J. PESCE B.Sc.  
 ONTARIO LAND SURVEYOR

PLAN 65R-35643  
 RECEIVED AND DEPOSITED  
 DATE May 13, 2015  
 REPRESENTATIVE FOR THE  
 LAND REGISTRAR FOR THE  
 LAND TITLES DIVISION OF YORK  
 (No. 65)

SCHEDULE					
PART	PART OF LOT	REGISTERED PLAN	PART OF PIN	OWNER	AREA
1	11				
2	12				
3	15				
4	16				
5	17				
6	18				
7	19				
8	20				
9	21				
10	22				
11	23				
12	24				
13	65M-4453		03515-1165		
14	65M-4453		03515-1165		
15	65M-4453		03515-1165		
16	65M-4453		03515-1165		
17	65M-4453		03515-1165		
18	65M-4453		03515-1165		
19	65M-4453		03515-1165		
20	65M-4453		03515-1165		
21	65M-4453		03515-1165		
22	65M-4453		03515-1165		
23	65M-4453		03515-1165		
24	65M-4453		03515-1165		
25	65M-4453		03515-1165		
26	65M-4453		03515-1165		
27	65M-4453		03515-1165		
28	65M-4453		03515-1165		
29	65M-4453		03515-1165		
30	BLOCK 81				
31				2151028	25m <sup>2</sup>
32				ONTARIO LIMITED	25m <sup>2</sup>

**BEARING NOTE**  
 BEARINGS ARE UTM GRID BEARINGS, DERIVED FROM GPS OBSERVATIONS AND ARE REFERRED TO THE UTM PROJECTION, ZONE 17, MADRS (CURS 1997) ADJUSTMENT  
 DISTANCES SHOWN ON THIS PLAN ARE ADJUSTED GROUND DISTANCES AND CAN BE CONVERTED TO UTM GRID DISTANCES BY MULTIPLYING BY A COMBINED SCALE FACTOR OF 0.999771

UTM COORDINATES			
POINT	NORTHING	EASTING	
A	4907303.06	629581.30	
B	4906720.15	629587.92	

THESE COORDINATE VALUES COMPLY WITH SECTION 142(2) OF THE REG. 2000  
 THESE COORDINATES CANNOT IN THEMSELVES BE USED TO RE-ESTABLISH  
 THE CORNER OR BOUNDARIES SHOWN ON THIS PLAN

**DAVID J. PESCE SURVEYING**  
 PROFESSIONAL LAND SURVEYOR  
 43 MCCAGUE CRESCENT, ALLSTON, ONTARIO, L3R 1A7 EXAMINED BY: DRANN BY: CALDO BY:  
 PHONE (705) 434-9475, FAX (705) 434-0158 D.J.P. O.L.S. PROJECT 11-726  
 email: david@dal-j-pesce-surveys.com