



GEORGINA

**THE CORPORATION OF THE
TOWN OF GEORGINA
Georgina Environmental Advisory Committee Agenda**

Tuesday, April 1, 2025

7:00 PM

Pages

1. CALL TO ORDER

“The Town of Georgina recognizes and acknowledges that we are on lands originally used and occupied by the First Peoples of the Williams Treaties First Nations and other Indigenous Peoples, and on behalf of the Mayor and Council, we would like to thank them for sharing this land. We would also like to acknowledge the Chippewas of Georgina Island First Nation as our close neighbour and friend, one with which we strive to build a cooperative and respectful relationship.

We also recognize the unique relationship the Chippewas have with the lands and waters of this territory. They are the water protectors and environmental stewards of these lands and we join them in these responsibilities.”

2. ROLL CALL

3. COMMUNITY ANNOUNCEMENTS

4. INTRODUCTION OF ADDENDUM ITEM(S)

5. APPROVAL OF AGENDA

6. DECLARATION OF PECUNIARY INTEREST AND GENERAL NATURE THEREOF

7. ADOPTION OF MINUTES

1. Minutes of the meeting held on February 25, 2025

3

8. SPEAKERS

1. Lake Simcoe Region Conservation Authority (LSRCA)

7

Don Goodyear, General Manager of Integrated Watershed Management, from the Lake Simcoe Region Conservation Authority, to speak and present on the Ecological Health of Lake Simcoe.

9. DELEGATIONS/ PETITIONS

10. PRESENTATIONS

11. REPORTS

12. GENERAL INFORMATION ITEMS

1. Willow Beach Design Concept

27

Information from the Community Services Department on the Willow Beach Design Concept attachment.

13. MOTIONS/ NOTICES OF MOTION

14. OTHER BUSINESS

15. CLOSED SESSION

16. MOTION TO ADJOURN



THE CORPORATION OF THE
TOWN OF GEORGINA

Georgina Environmental Advisory Committee Minutes

Date: Tuesday, February 25, 2025
Time: 7:00 PM

Members of
Committee Present: Dave Neeson
Lee Dale
Mary-Lynn Seeley
Mark Setter

Members of
Committee Absent: Austin Rooney

Staff Present: Samantha Naumoski, Committee Services Coordinator
Alan Drozd, Manager of Planning Policy

1. CALL TO ORDER

“The Town of Georgina recognizes and acknowledges that we are on lands originally used and occupied by the First Peoples of the Williams Treaties First Nations and other Indigenous Peoples, and on behalf of the Mayor and Council, we would like to thank them for sharing this land. We would also like to acknowledge the Chippewas of Georgina Island First Nation as our close neighbour and friend, one with which we strive to build a cooperative and respectful relationship.

We also recognize the unique relationship the Chippewas have with the lands and waters of this territory. They are the water protectors and environmental stewards of these lands and we join them in these responsibilities.”

Called to Order at 7:01 p.m.

2. ROLL CALL

As noted above.

3. COMMUNITY ANNOUNCEMENTS

None.

4. INTRODUCTION OF ADDENDUM ITEM(S)

None.

5. APPROVAL OF AGENDA

RESOLUTION NO. GEAC-2025-0001

Moved By Mary-Lynn Seeley

Seconded By Mark Setter

That the February 25, 2025 Agenda be approved as presented.

Carried

6. DECLARATION OF PECUNIARY INTEREST AND GENERAL NATURE THEREOF

None.

7. ADOPTION OF MINUTES

1. Minutes of the meeting held on October 22, 2024

RESOLUTION NO. GEAC-2025-0002

Moved By Lee Dale

Seconded By Mary-Lynn Seeley

That the Minutes of the meeting held on October 22, 2024, be approved as presented.

Carried

8. SPEAKERS

None.

9. DELEGATIONS/ PETITIONS

None.

10. PRESENTATIONS

None.

11. REPORTS

None.

12. GENERAL INFORMATION ITEMS

1. Tree Planting Initiatives 2024

Committee members reviewed and discussed the PowerPoint information presented to Council on January 15, 2025, regarding the 2024 Tree Planting Initiatives.

Mark Setter: How is it determined how the 1,000 trees and shrubs get distributed?

Mark Setter: Will any of the Trees be made available to local businesses and organizations or just residents?

Alan Drozd, Manager of Planning Policy, advised the Committee that outreach will be made to the appropriate department to seek answers to the Committee's questions.

RESOLUTION NO. GEAC-2025-0003

Moved By Mark Setter

Seconded By Mary-Lynn Seeley

That the presentation regarding the 2024 Tree Planting Initiatives be received for information.

Carried

13. MOTIONS/ NOTICES OF MOTION

None.

14. OTHER BUSINESS

None.

15. CLOSED SESSION

None.

16. MOTION TO ADJOURN

RESOLUTION NO. GEAC-2025-0004

Moved By Mark Setter

Seconded By Mary-Lynn Seeley

That the Georgina Environmental Advisory Committee meeting adjourned at 7:15 p.m.

Carried

Councillor Dave Neeson, Chair

Samantha Naumoski, Committee Services Coordinator

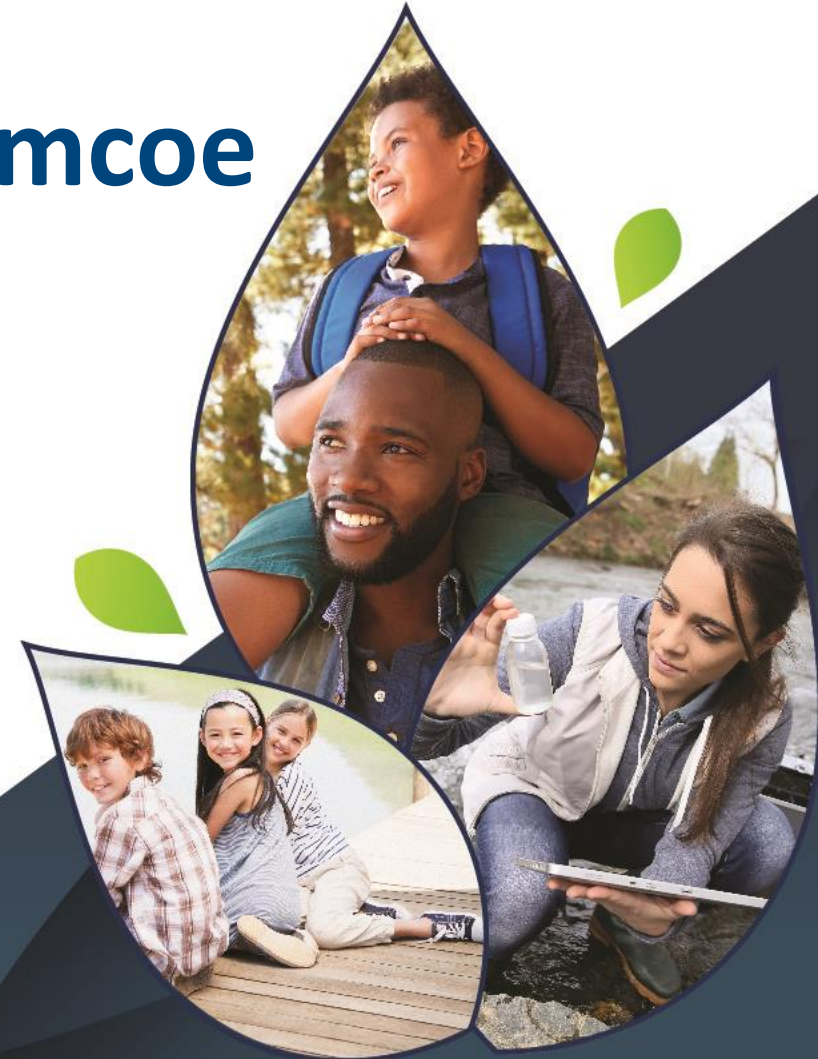
Ecological Health of Lake Simcoe

Georgina Environmental Advisory Committee

April 1, 2025

Don Goodyear

General Manager, Integrated Watershed Management



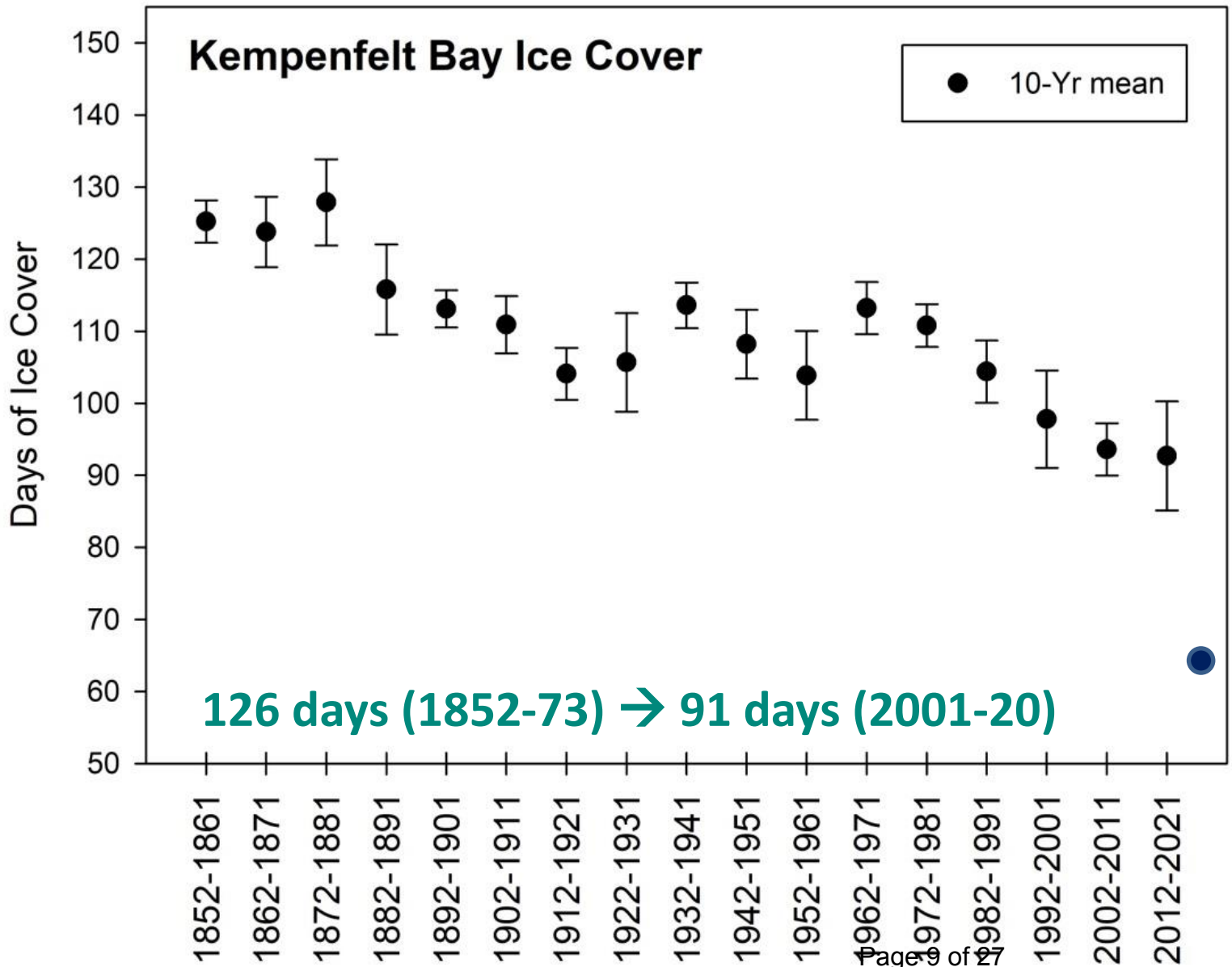
Lake Simcoe Region
conservation authority



Key stressors:

- **Climate change**
- **Invasive species**
- **Nutrients**

Decreasing ice cover



Longest:
152 days (1875-6)

Shortest:
50 days (2023-4)

Ice-on:
Earliest: Dec 1, 1875
Latest: Feb 2, 2002

Ice-off:
Earliest: Mar 10, 2024
Latest: May 9, 1873

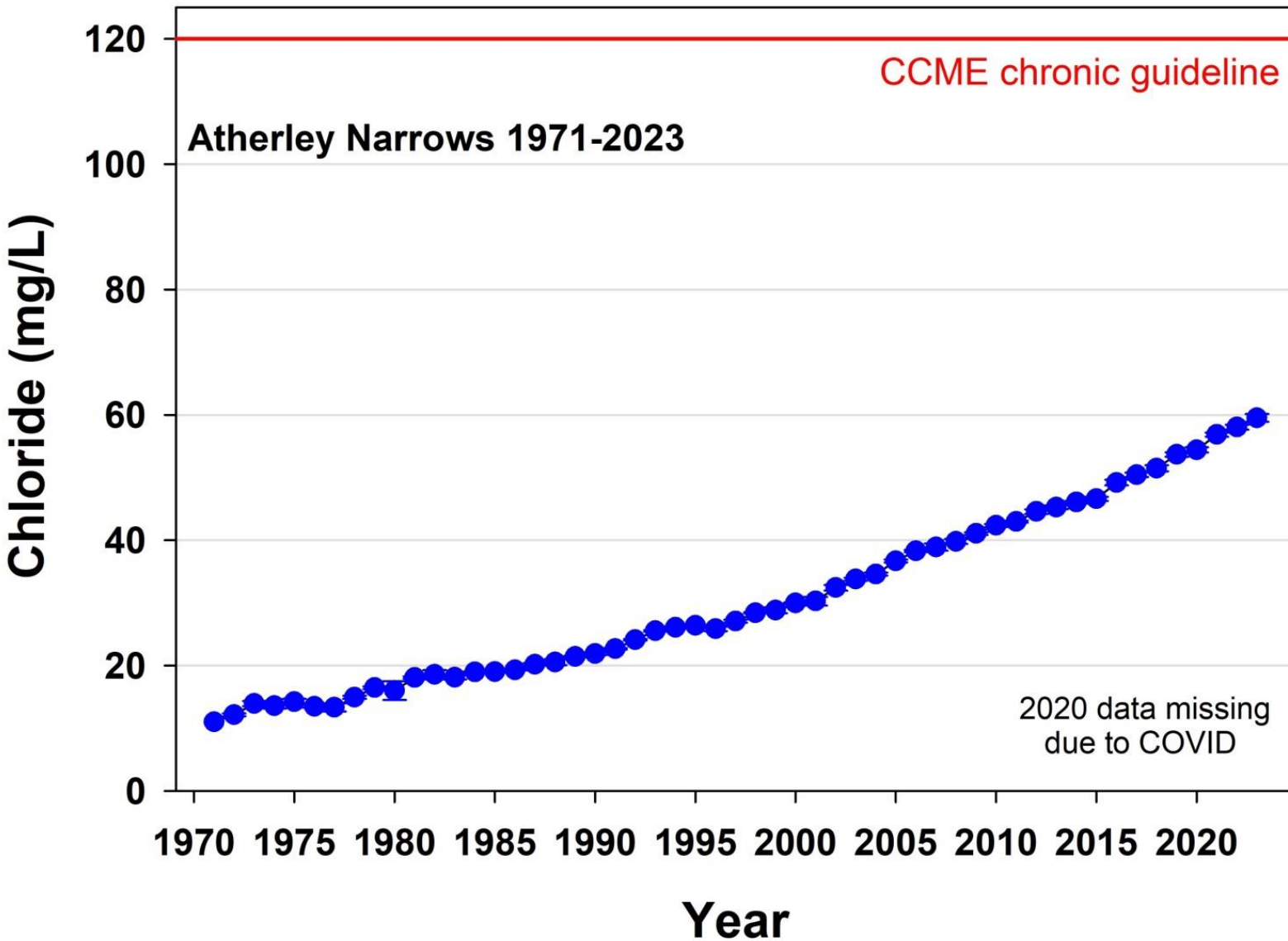
Main Basin did not freeze: 2002, 2012

Climate change and blue-green algae

- July and September 2024: first known lake-wide blooms of blue-green algae
 - Causes: warmer water, no wind



Paved surfaces and freeze / thaw = more winter salt use



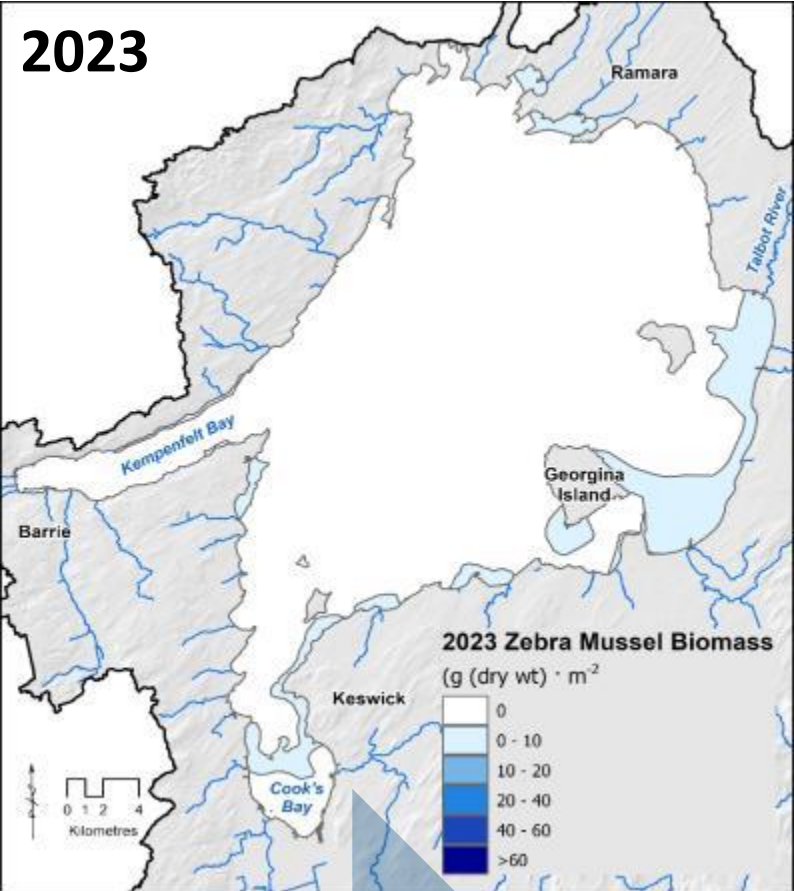
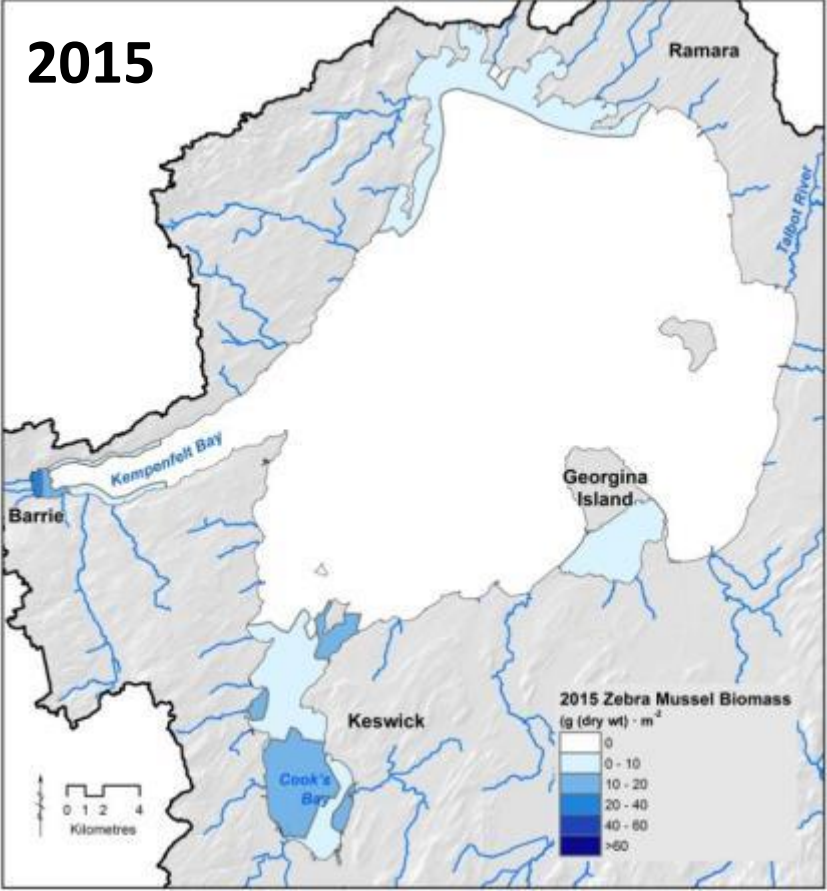
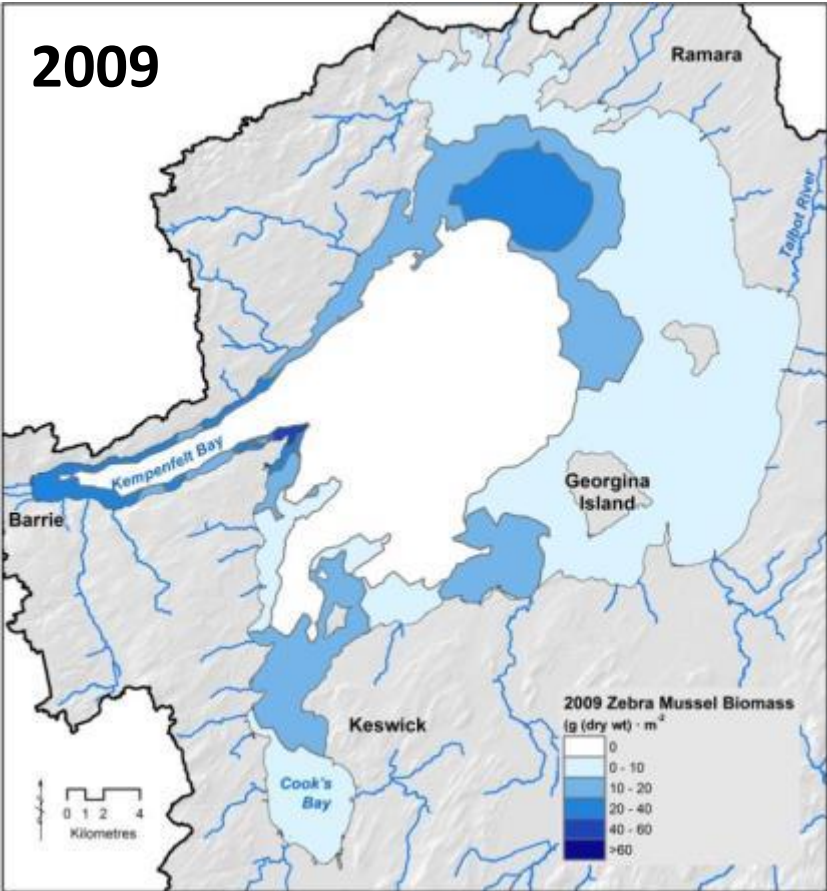
Salt Alternatives?

- Beet juice: depletes oxygen
- Sand: smothers benthic invertebrates

Limit application rate / liability

Seawater chloride = 19,400 mg/L

Zebra mussel trends

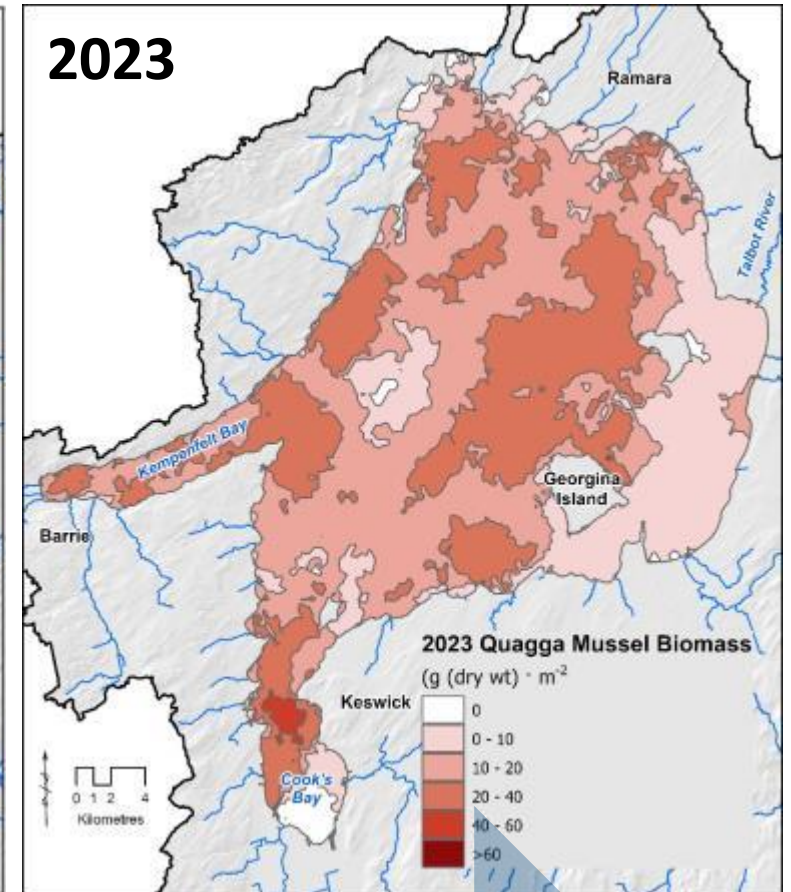
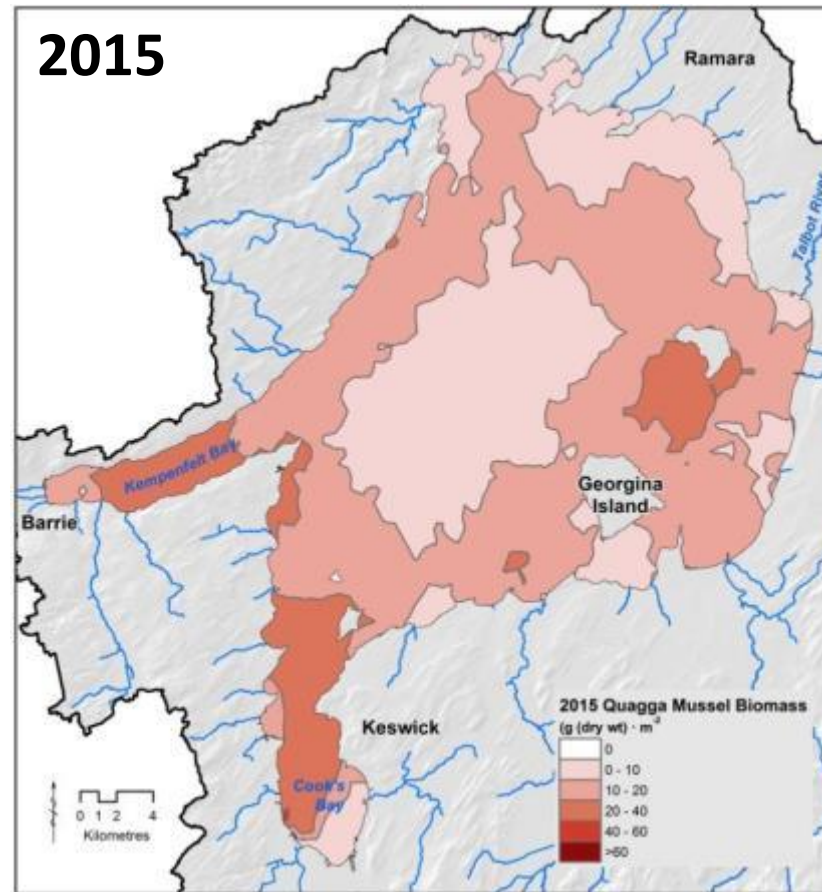
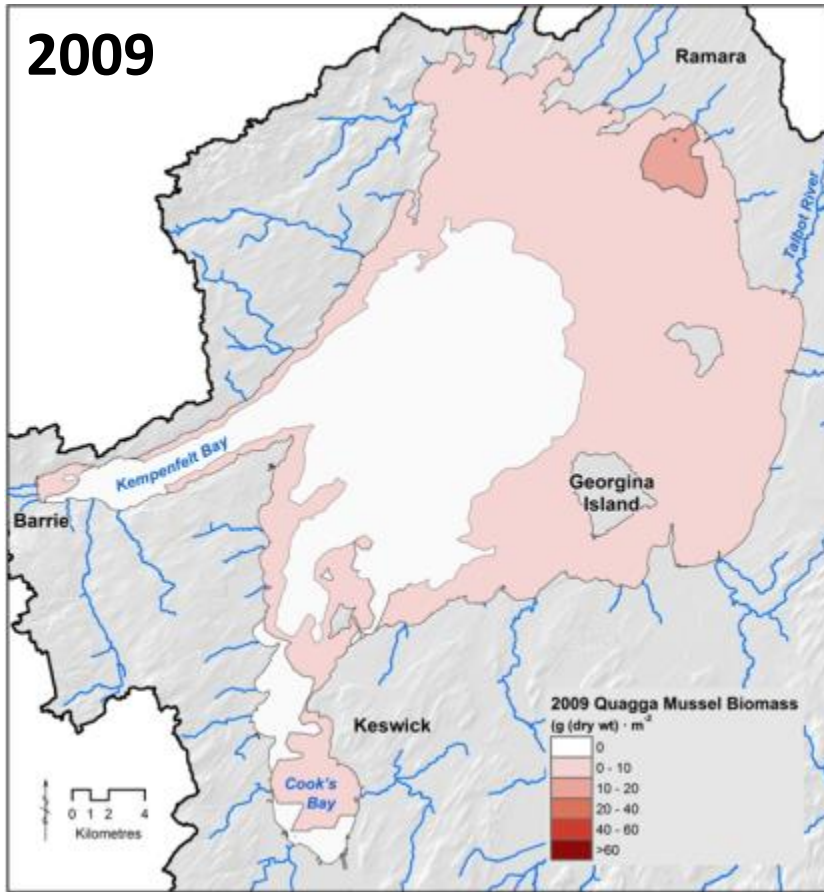


87 %

12.2 %

0.8 %

Quagga mussel trends

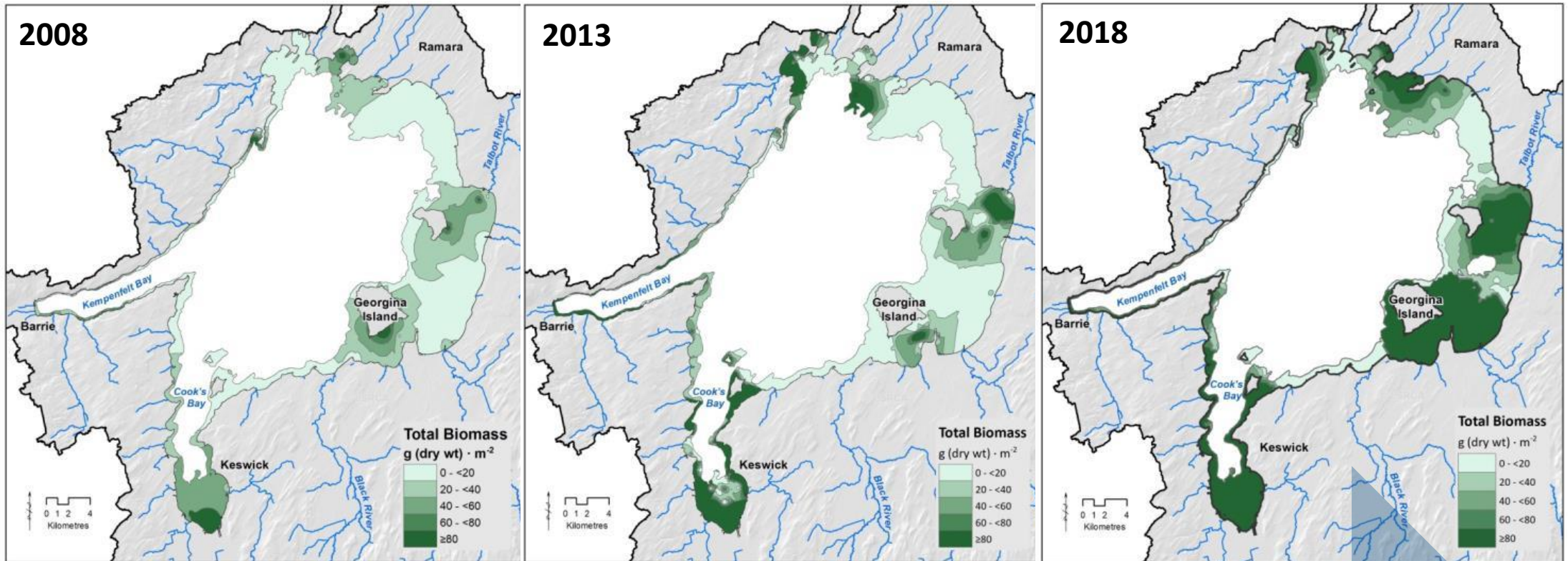


13 %

87.8 %

99.2 %

5X increase in aquatic plants



29.9 g/m^2

80.3 g/m^2

153.9 g/m^2

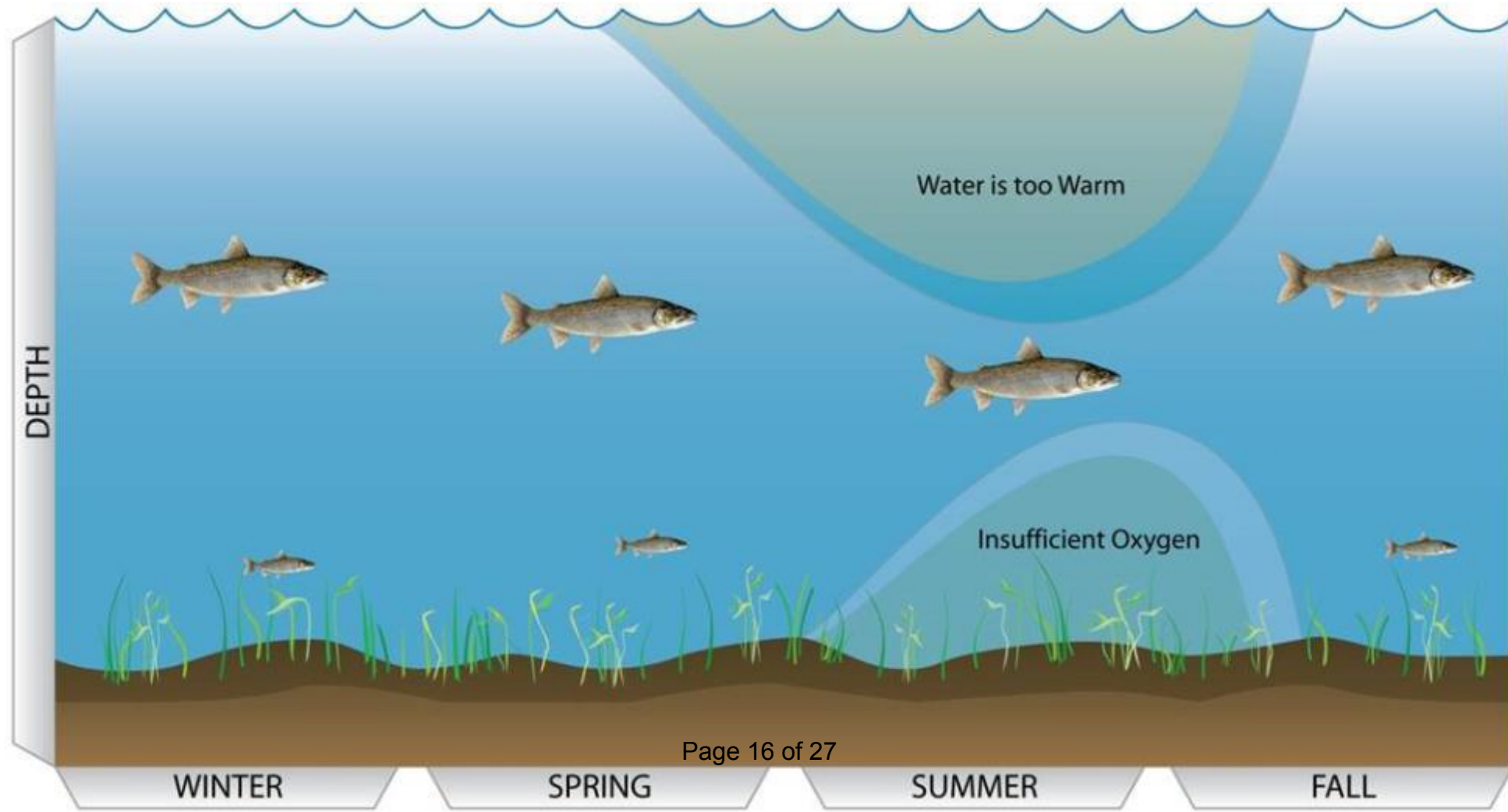
Water soldier

- Found in southern Cook's Bay, July 2024
- Likely present for 3-5 years

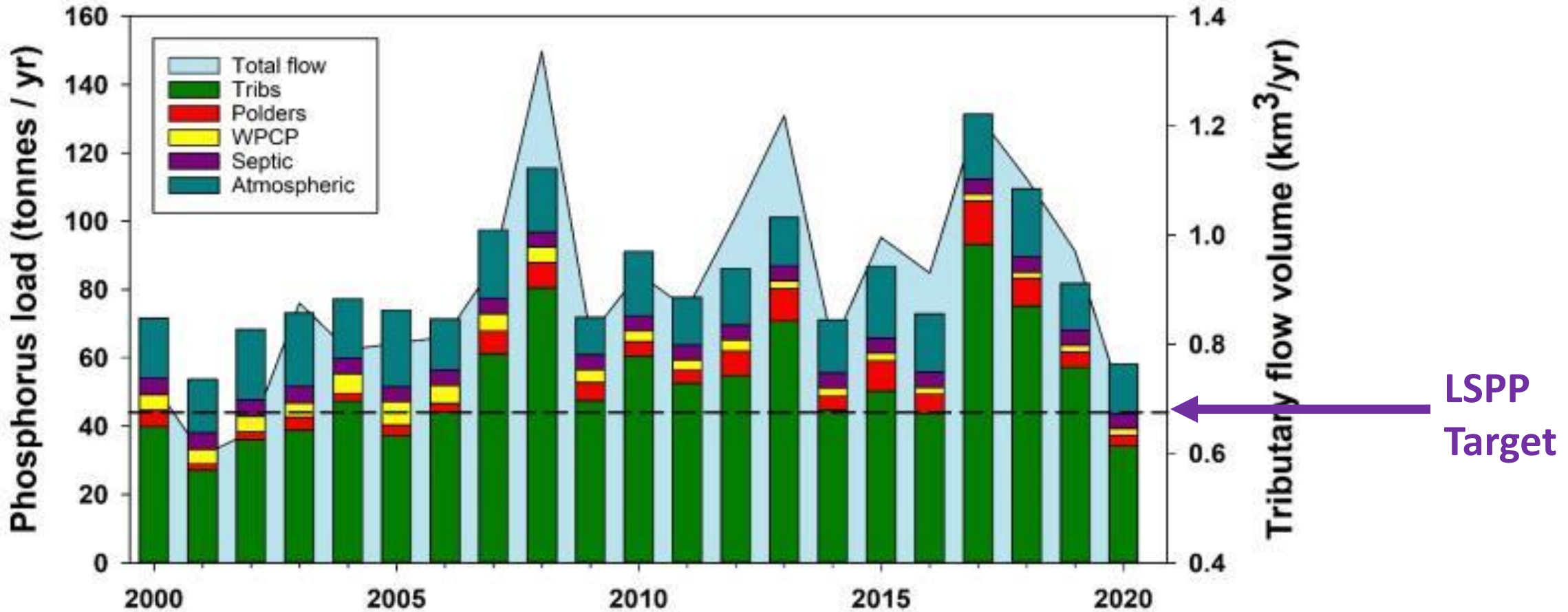


Lake Simcoe Protection Plan (2009)

- Target for dissolved oxygen = 7 mg/L
- Estimated load = 44 tonnes of phosphorus per year



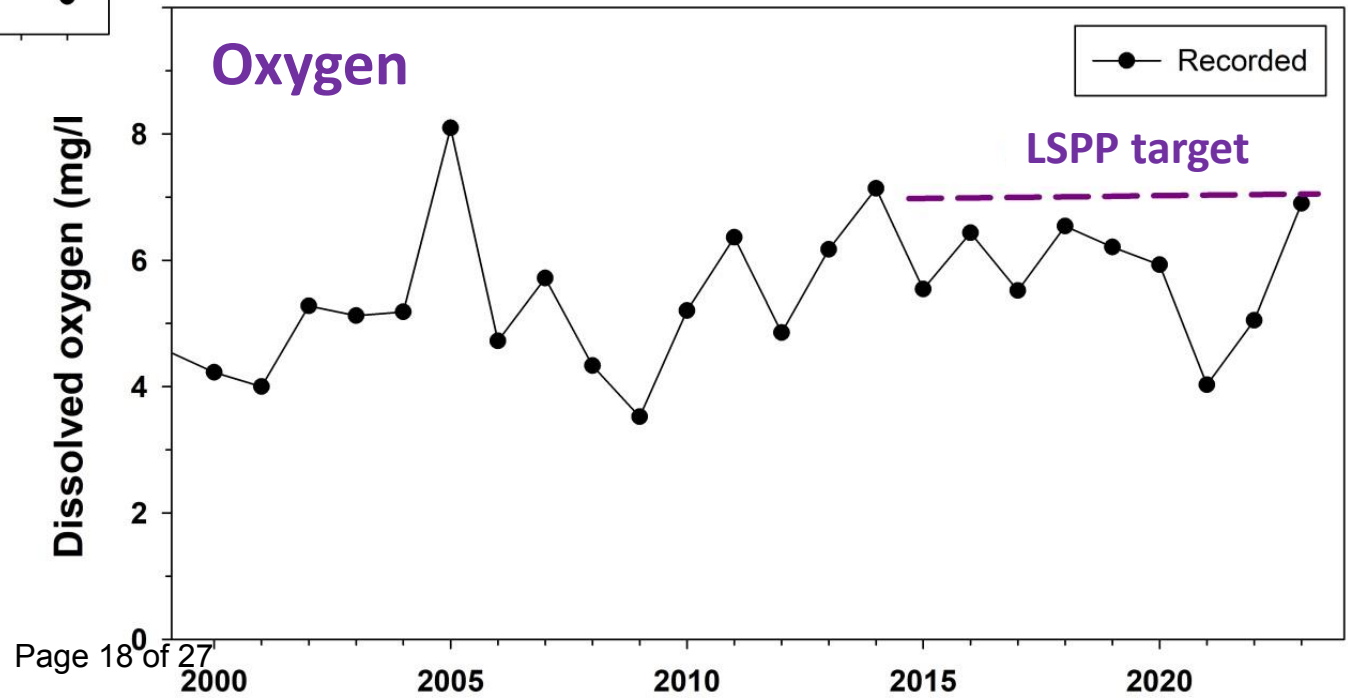
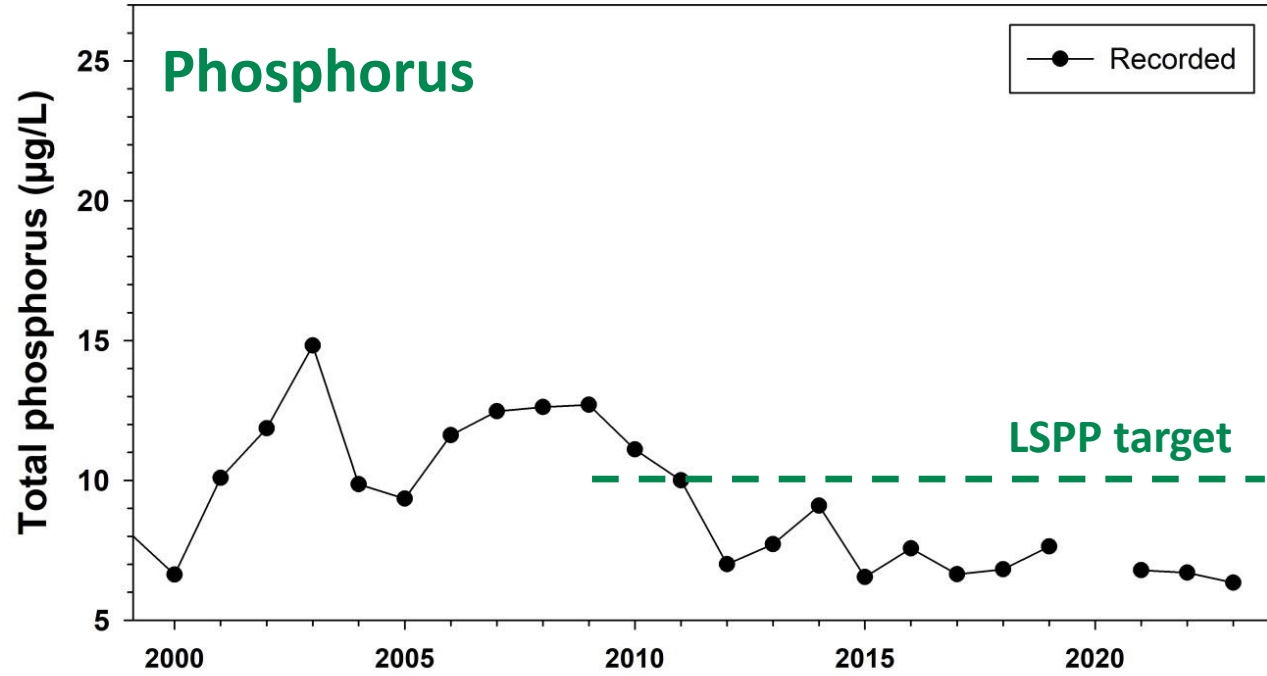
Nutrient Inputs (Loads)



Hydrological year (June 1 → May 31)

Higher tributary flows
=
Higher loads

In-Lake Nutrients and Oxygen



LSPP: 44 tonnes

10 µg/L

7 mg/L

2016-2020 average:

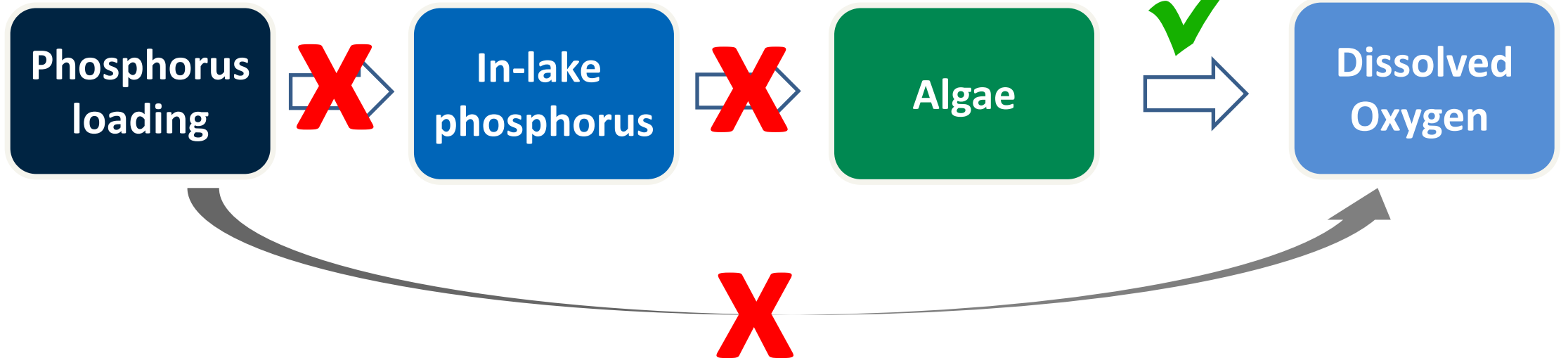
90.7 tonnes

Predicted: 29 µg/L

Predicted: 4.0 mg/L

Actual: 7.2 µg/L

Actual: 6.1 µg/L



Nutrient “decoupling”

1: Changing supply

- Too much water
- Too fast
- Wrong time of year
- High flows = high loads

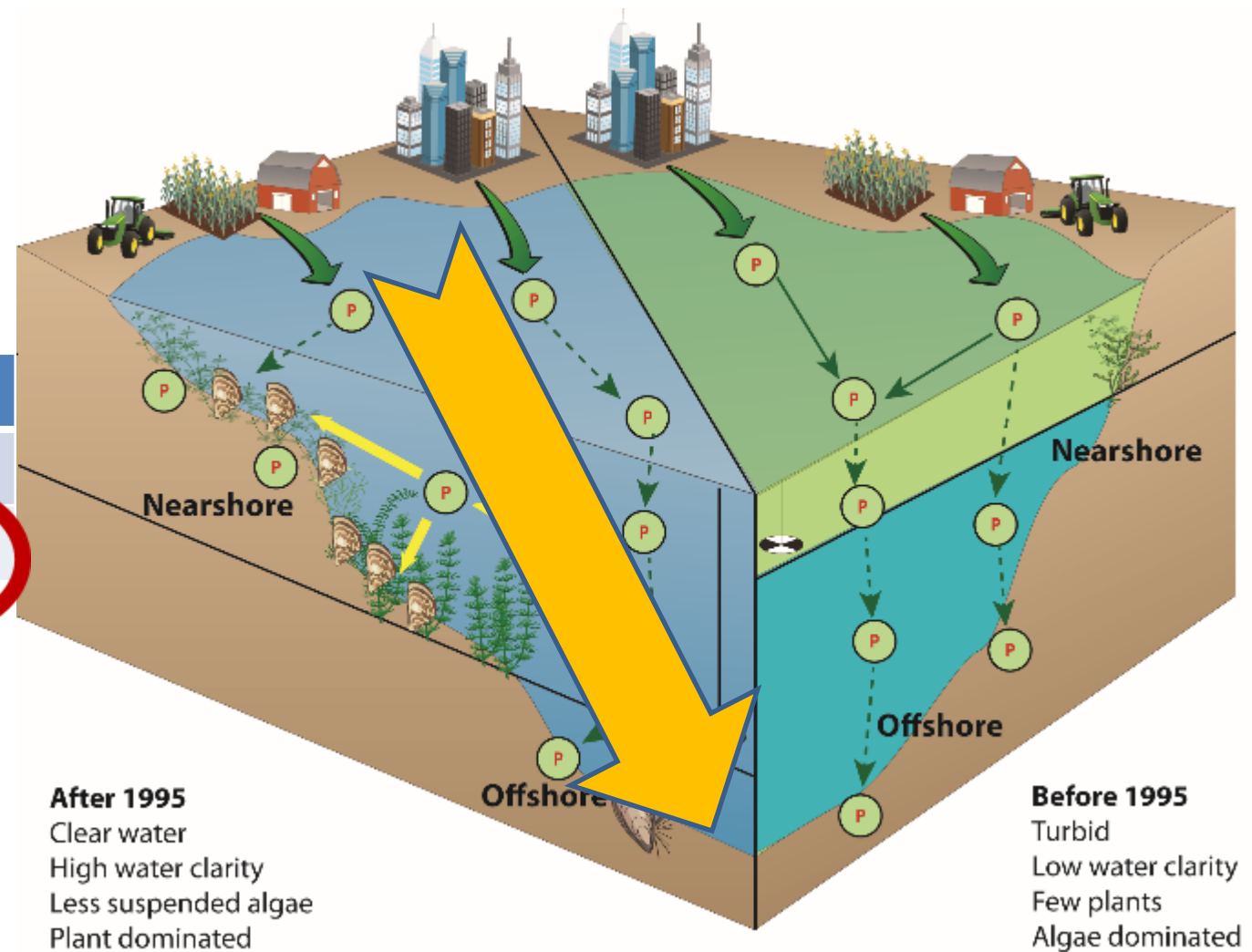


Nutrient "decoupling"

2: Changing in-lake use

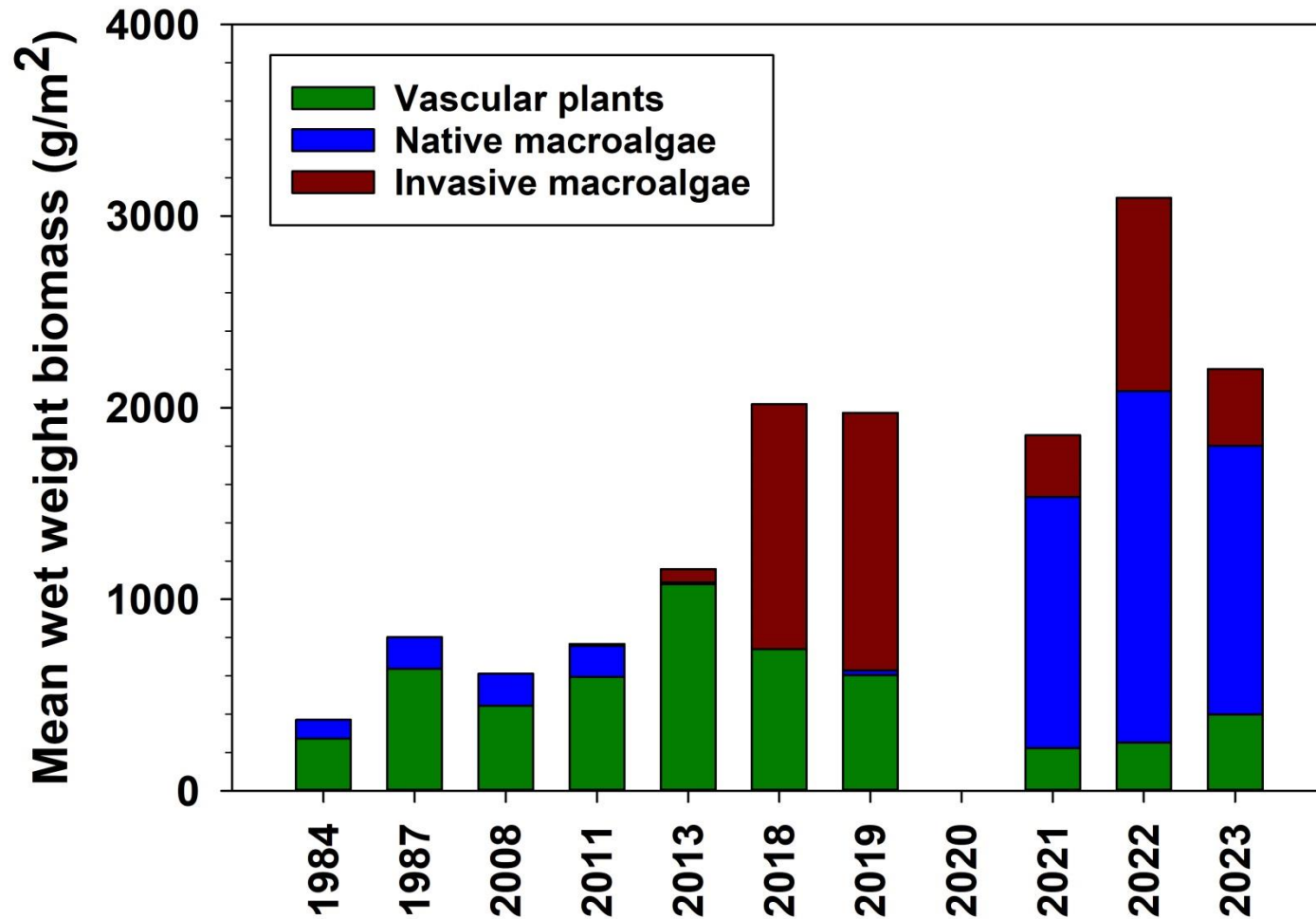
| Filtering rate | 2009 | 2015 | 2023 |
|------------------------|-------|-------|-------|
| Shallow (billions L/h) | 126.5 | 169.0 | 130.6 |
| Deep (billions L/h) | 3.5 | 9.2 | 20.9 |

8360 Olympic swimming pools per hour!



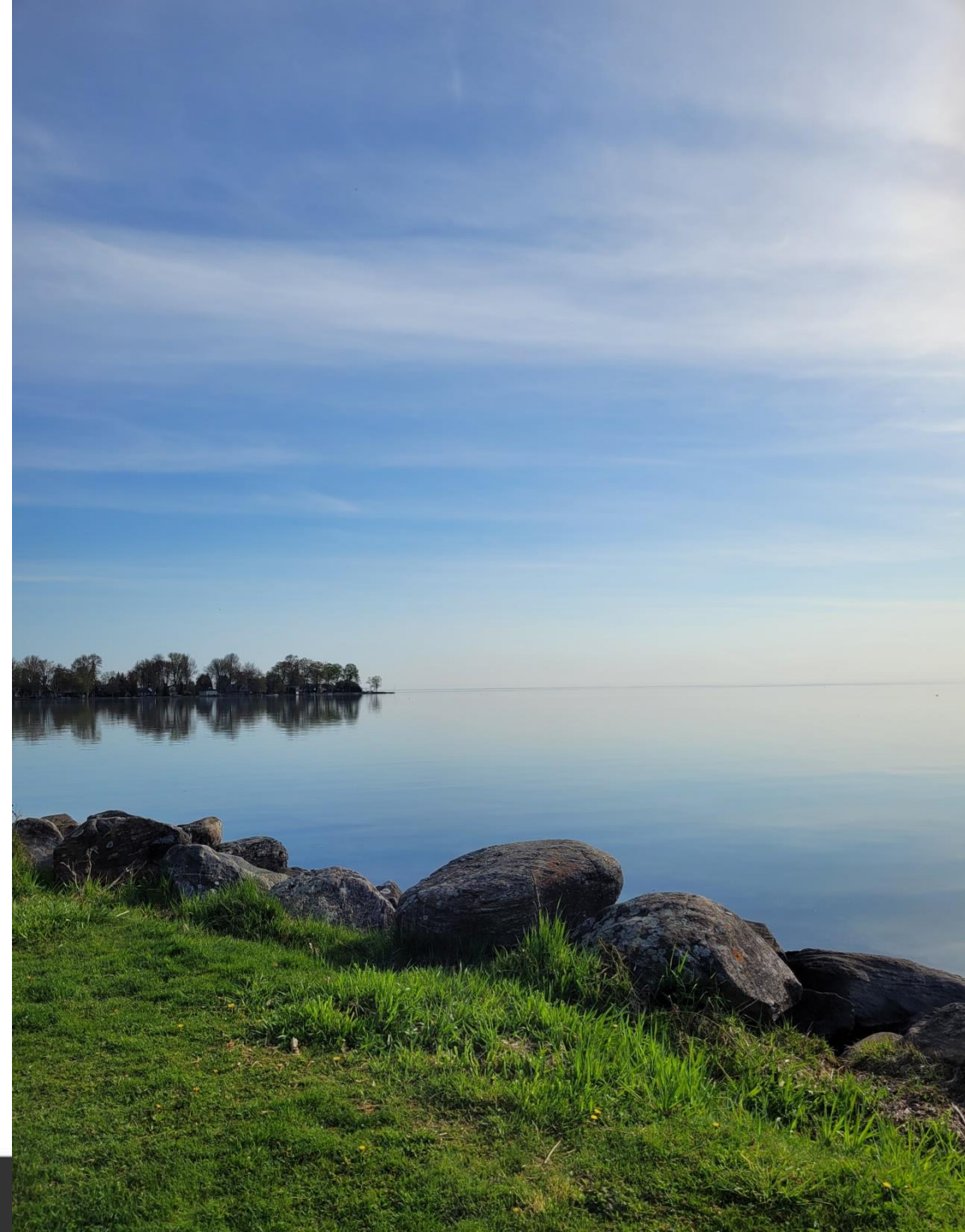
Nutrient "decoupling"

3: Freshwater seaweeds replacing plants

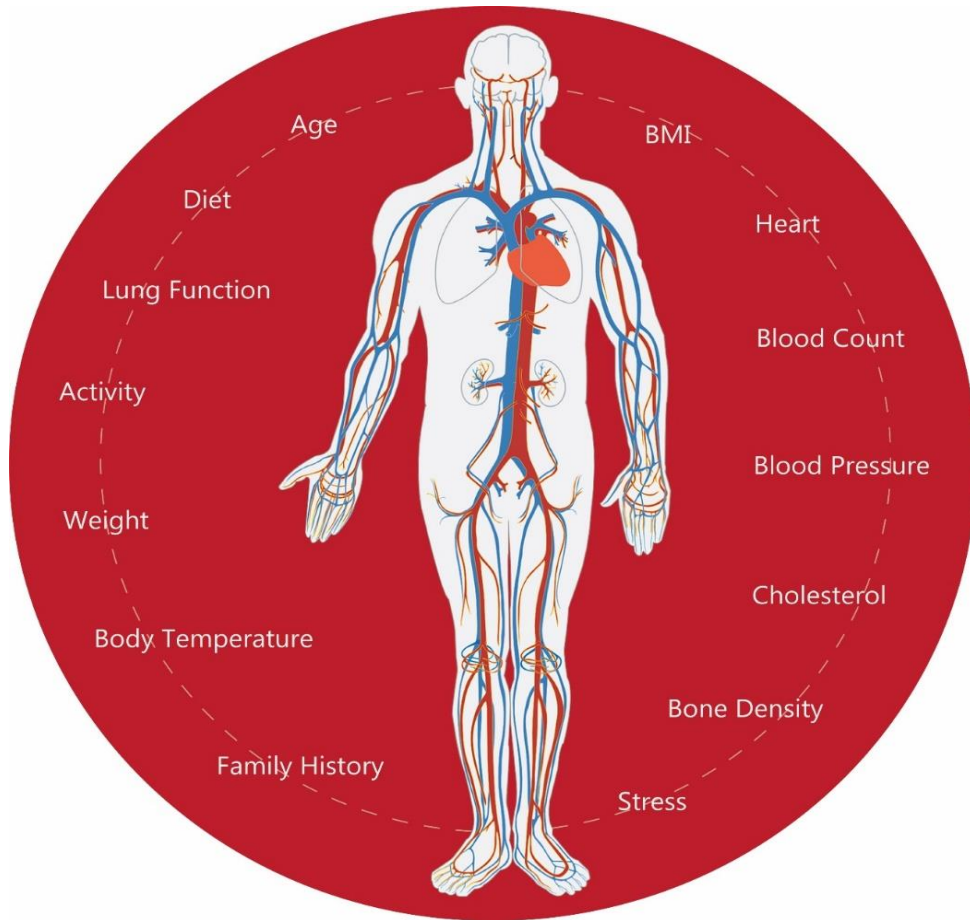


Adaptive lake management

- Science-based, monitor and evaluate
- Problems now will not be the same in 10 years
- Lake Simcoe is not the same as it was in 2009
- Effective lake management requires a holistic and adaptive approach



Assessing health requires a holistic approach



Our Health



Lake Health

How can I help?

- Maintain septic systems
- Garden with native plants, use compost, or phosphorus-free fertilizer
- Stabilize shorelines
- Respect “no wake” zones
- Clean, Drain, Dry your boat when trailering between lakes
 - **Mussels survive 7 days out of water**
 - **Larvae: 30 days in a wet bilge**
- Don't dump bait / buy local bait
- Use environmentally friendly cleaning products
- Keep engines well maintained



Thank You



Lake Simcoe Region
conservation authority



Concept

The concept plan for Willow Beach Park gives priority to pedestrians and cyclists over cars. The plan envisions that the park's green space is directly connected to the water's edge by redirecting Lake Drive to Metro Road North through new driveways and parking lots along the park's east and west sides. The existing Lake Drive right-of-way is transformed into a widened beach with a new lakefront promenade that accommodates pedestrians, cyclists and emergency access, and safely connects the sand beach and green space portions of the park.

New picnic areas, washrooms, multi-use play courts, and play facilities are linked along a main park pathway. The new washroom building, which may include change-rooms and lockers, is centrally located to be easily accessible from all areas of the park. Consideration should be given to maintaining the new building year-round to accommodate year round use. Willow Beach Park is a popular location for access to the lake for ice fishing, snowmobiles and kite boarding. A paved terrace along the lakefront promenade may be used as flexible park space, and accommodate special events as well as pop-up / seasonal vendors.

What people want

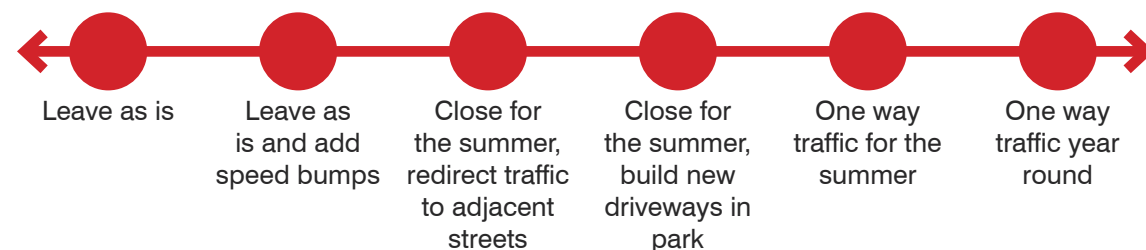
- A park without large poorly drained areas
- Healthy trees
- Safe access down to water
- Place to launch canoes/kayaks, place for dogs, place for residents only at the water's edge
- Buoys to keep boats away from swimming, life guard station
- Signage of what you can and can't do
- More parking, better managed
- More facilities like an exercise circuit, splash pad, bigger playground, skate park, sports fields and storage racks for canoes/kayaks
- Better washrooms and change rooms
- Make sure we can accommodate ice fishing, snow machines, ATVs, space for events, place for community activated public art
- Widened beach

We also heard the full spectrum of opinion on Lake Drive and opportunities for new commercial/food, retail uses.



Concept Plan for Willow Beach Park

Full spectrum of opinion on Lake Drive



Full spectrum of opinion on new commercial/retail/food

